

# WEATHER

|                    | Min. | Max. | Precip. |
|--------------------|------|------|---------|
| Thursday, Sept. 29 | 58   | 82   | 0.00    |
| Friday, Sept. 30   | 58   | 78   | 0.00    |
| Saturday, Oct. 1   | 55   | 81   | 0.00    |
| Sunday, Oct. 2     | 54   | 70   | 0.00    |
| Monday, Oct. 3     | 57   | 81   | 0.00    |
| Tuesday, Oct. 4    | 58   | 72   | 0.02    |
| Wednesday, Oct. 5  | 47   | 74   | 0.02    |

By H. K. L.

# The Chelsea Standard

## QUOTE

"Every man has a rainy corner in his life, from which bad weather besets him."  
—Jean Paul Richter.

ONE HUNDRED-SECOND YEAR—No. 16

14 Pages This Week

CHELSEA, MICHIGAN, THURSDAY, OCTOBER 7, 1971

15c per copy

SUBSCRIPTION: \$4.00 PER YEAR

## Chest Fund Seeks \$26,007 To Meet Budget

A kickoff meeting held Wednesday night at the Municipal Building readied Chelsea Community Chest workers for the official opening of the 1972 campaign today, Oct. 10.

This year, the goal for the two-week long drive is \$26,007, an increase of \$1,157 over last year's goal of \$24,850.

Contributions to the Chelsea Community Chest are eventually distributed to 47 different organizations and agencies which either refer aid to those in need, or enrich the life of the community by providing services and programs at might not otherwise exist.

Some of the groups receiving community chest support are: the Chelsea Recreation Council, the Salvation Army, Huron Valley Girl Scouts, Catholic Social Service, Chelsea Social Service, Chelsea Band, Boy Scouts, Washtenaw Association for the Retarded, Huron Valley Child Guidance, American Red Cross, Child and Family Service, and the Michigan United Fund.

Campaign responsibility is divided among seven divisions: rural, schools, professional, industrial, commercial, organizations and residential.

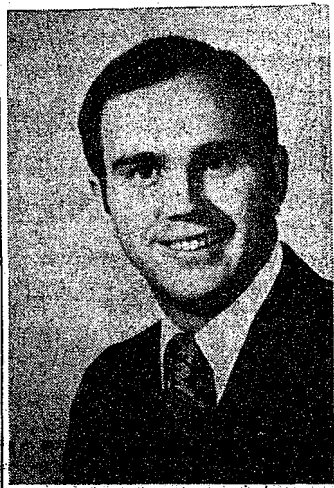
This year, one major thrust of the campaign is the industrial division's payroll deduction plan, which is available to approximately 60 percent of the plant work-

ers who will be contacted by that division during the campaign.

Campaign chairman James Hoffmeyer said that the payroll deduction method may be much easier than a blanket contribution. "It's much easier to give 50 cents a week through a payroll deduction than it is to put \$26 in your pledge envelope," Hoffmeyer added.

David Rowe, publicity chairman for the drive, also said that if the payroll deduction plan is not available at some of the industries in the area, it may be because the employer does not realize how many employees want to make use of it.

The last meeting in the pre-campaign period will be a training meeting for rural and residential area workers to be held at 7:30 p.m. tonight in the Municipal Building.



DAVID C. McLAUGHLIN  
**David McLaughlin Joins Rademacher In Law Practice**

Attorney David C. McLaughlin, a Chelsea native, has returned to Chelsea to enter into a law partnership with Attorney William Rademacher. McLaughlin and Rademacher officially joined forces this Monday, Oct. 4, and the firm will now be known as Rademacher and McLaughlin.

McLaughlin is a graduate of Chelsea High school, and received his undergraduate degree from the University of Michigan in 1967. He received his law degree from Wayne State University in 1970, and has been associated with Attorney Alexander Perlos in Jackson, since that time.

Although he still resides in Jackson, he intends eventually to live in Chelsea. "I'm excited about being back," McLaughlin said, "I look forward to a long and fruitful practice here."

His parents are Russell A. McLaughlin of Houghton Lake and Jean McLaughlin of Ft. Lauderdale, Fla.

## Bulldogs Add Saline to List Of Victims

Chelsea definitely established itself as one of the Southeastern Conference teams high school football fans will have to follow closely as they defeated Saline, 14-6, Friday night. The win made them one of only three teams in the conference still undefeated.

The first quarter of the game was a slow one, as both Chelsea and Saline offenses had trouble establishing momentum.

Things picked up in the second quarter as Tom Lixey ran 31 yards in two plays to move the Bulldogs to the Saline 24-yard line.

Two plays later, halfback Jeff Hughes broke through the left side of the Saline defense, dodged two tacklers, and went all the way for the first Chelsea TD. Tom Lixey ran for the extra two points, and Chelsea led, 8-0.

Hughes was headed for his second score of the evening during the second quarter as he made a long punt return, but the 6'1" senior lost his temper following a hard tackle, and was ejected from the game, nullifying the run.

Saline had attempted a running game against the Chelsea Bulldogs' rugged defense during the first half, an unsuccessful tactic that was abandoned only late in the second half.

Early in the third period the Hornets recovered a Chelsea fumble on the first play from scrimmage at the 39. The Saline threat ended, however, when Joe Aspranti intercepted a Saline pass on Chelsea's 10-yard line.

Randy Brier took the Saline punt, and ran 25 yards, ending 20 yards inside Saline territory. On the third down, Tim Lancaster danced away from the Saline defense and went 30 yards for Chelsea's final TD. The extra point conversion attempt was unsuccessful, and Chelsea led, 14-0. (Continued on page six)

## Private Wells Banned Within Village Limits

The Chelsea Village Council unanimously passed a resolution at their Tuesday night meeting stating that all private wells within the city limits—whether they are now being drilled or are already operational—must be reported to the Washtenaw County Health Department.

Supplementary wells with the village are prohibited by state law unless prior approval for their construction was granted both by the Michigan Department of Health and the Washtenaw County Health Department.

Supplementary wells, where there is an existing municipal water supply, are banned because of the danger of contaminating the public water supply.

"If a private well is interconnected with the village water supply, and the private well is contaminated, the entire village water supply could also become contaminated," Fritz Weber, village administrator said.

He added that the interconnection exists when a line from a private well in fed into any tap that is already connected to the village water lines.

The council action was one of self protection, Weber said. "To protect our water supply we'll have to report any private wells to the County Health Department."

Weber added that the Light & Water department now knows of two or three wells which are being drilled within the village limits, and said that others could be detected by meter readers.

"We also hope citizens will notify us of any wells they know about," Weber said, "if just for their own safety."

Weber also said that once the Health Department is notified of a well, they will send an inspector. He doubted that the county would issue any permits for the wells, saying that he expected all the private wells in the city would have to be abandoned.

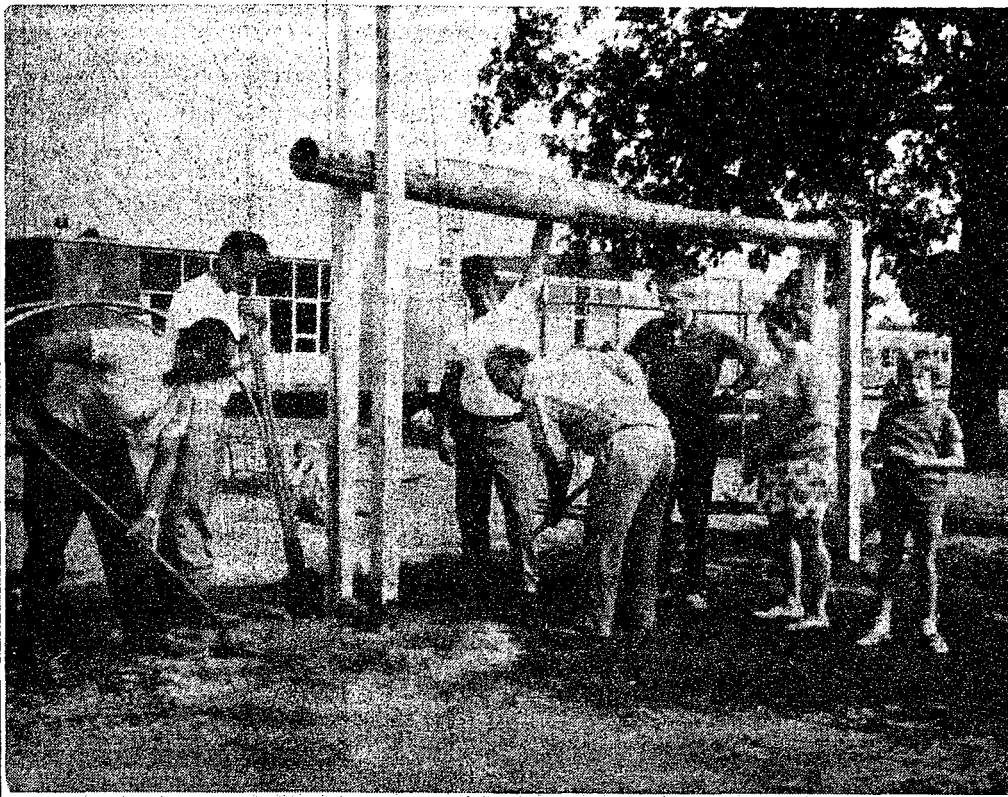
## Police Chief Meranuck Confined to Hospital

Chelsea Police Chief George Meranuck was taken to St. Joseph Mercy Hospital in Ann Arbor last Thursday afternoon after suffering severe chest pains.

According to his physician, Dr. James Botsford, Meranuck is being held for observation at this time.

"His condition at present is satisfactory," Botsford said. Botsford also said that Meranuck is not allowed phone calls or visitors.

No date has been set for his release.



INTO THE SWING: Members of the North school Boosters held a work-bee at North school Saturday to continue their program of playground improvements for the school. Here, several members of the parent-teacher organization work on the erection of a frame for a tire swing. Digging in (left to right) are Roy Guenther, William Chandler, Robert Koch, Pete Stein, Principal Robert Benedict, first grade teacher, Mrs. Pete Stein, and Michael Benedict.

## Service Awards Banquet To Honor Chelsea Educators

The first Service Honors Banquet, an event recognizing approximately 30 Chelsea teachers and administrators with 10 or more years of service in the field of education, will be given by the Chelsea Education Association Saturday, Oct. 9, at the Chelsea Rod & Gun Club.

Approximately 150 invited guests will attend the banquet, which will be followed by an awards presentation, speeches by Board of Education president William Storey and Superintendent of Schools Charles Cameron, musical entertainment performed by Diane L'Roy and Bruce Galbraith, and dancing to popular recordings from the 1930's through the 1970's.

According to CEA President Ed Lauson, who is also master of ceremonies for the evening, the following forms of recognition will be used: Those with 10-

14-year educational careers will have their names printed in the program. Educators with 15 to 19 years of service will receive certificates. Those with 20-24 years in education will receive a pin, and those with 25 or more years of educational activity will receive an engraved plaque.

Lauson stressed the fact that service outside of the Chelsea School District, as well as in it, was taken into account in selecting the recipients of the awards.

Mrs. Iris Papsdorf, Mrs. Isabel Eisele, and Charles Cameron, all of whom have been involved in education for more than 34 years, will receive special attention during the evening.

Mrs. Papsdorf is now in her 36th year of teaching. She came to the Chelsea area in 1948, after teaching home economics and mathematics in Ohio high schools for 13 years.

She taught one year at North Lake and five years at Jewett Stone rural schools before coming into the Chelsea schools in 1955. She remembers that the only difficulty she had in making the transition from teaching hour-long classes on the high school level to teaching all grades in the one-room country school was squeezing all her classes in.

"They were all nice youngsters," Mrs. Papsdorf recalled. "I never had a discipline problem."

She now teaches 7th grade mathematics, but previously she taught both 7th and 8th grade math. She still enjoys teaching, especially working with the multitude of personalities found among 7th graders. "Every year I say 'this is my last year,'" Mrs. Papsdorf said, "but it's hard to quit."

Mrs. Isabel Eisele retired in 1971 after teaching for 35 years, 26 of them in Chelsea. Born and

raised in Chelsea, she began teaching in a one-room school in the Washtenaw country school system in 1936. She began teaching in the Chelsea area in 1945, and was taken by bus to the Savage country school where she taught second grade.

Mrs. Eisele said that her years of teaching were "a very happy time." Since her retirement, she has been to California, will leave for a two-week tour of Greece later this month, and intends to keep on traveling.

Although Superintendent of Schools Charles Cameron was born in Sidney, Nova Scotia, Canada, and grew up in Fennelle, he has spent his entire teaching and administrative career in Chelsea, coming here following his graduation from Kalamazoo College in 1937.

He taught high school social studies, American history, and government for 10 years, coached football and basketball for 11 years, and also coached baseball and track along the way.

He became the principal of Chelsea High school in 1947, the year Chelsea became a consolidated school.

He was named superintendent of schools in 1952.

While Cameron is not from a family of teachers, he has produced one. Two of his sons are now teachers, and his daughter, Carol Cameron Lauson, taught until the arrival of the Lausons' first child this summer. Cameron said that his youngest son, a freshman at Olivet College, does not now intend to teach.

Cameron said "I'm proud to have been a part of the growth and development both of Chelsea and the Chelsea schools. One of the greatest joys of remaining in the Chelsea school system has been seeing the successes former Chelsea students have achieved over the years."

## Color Tours, Barbecue Set For Week-end

Plans for the 16th annual Jaycee Chicken Barbecue and Color Tour, to be held at the corner of Old US-12 and M-52 this Sunday, Oct. 10, are all in order, according to Bob Updegraff, chairman of the event.

Jaycees will begin constructing the two 60-foot concrete block barbecue pits early Saturday morning, Updegraff said.

Around 6 a.m. Sunday morning, firemen Dave Rowe and Joe Verway will load the pits with charcoal and tend the fires until they reach the proper temperature for cooking the birds.

Chief Chiefs Jim Gaken, Joe Doering, Hank Orthing, Tim Orthing, and Ken Norris will have the first of the 2,500 dinners ready to serve at 10 a.m.

The barbecue site will be roped off to keep traffic moving in an orderly manner, Updegraff said.

Again this year, members of the Jaycee sponsored Cub and Girl Scout Troops will fold the boxes used for serving the dinners, working out of a Jiffy Mix truck on loan for the event.

After the boxes are assembled, members of the Jaycee Auxiliary will be adding the dinner rolls, chips, cole slaw and table service served along with the chicken.

Maps and posted routes for color tours through the Waterloo and Pinckney Recreation Areas will be available at the barbecue site, Updegraff said. Jaycees anticipate that many people, especially out-of-towners, will want to take their dinners with them on the tours.

The event will end at approximately 3 p.m., as the Jaycees begin to clean up their site.

The barbecue is the local Jaycees largest money making event, and supports many of the community service projects that the chapter conducts every year.

## Three Teens Arrested at Illicit Party

Three Chelsea area teens were arrested early Saturday morning as Washtenaw County Sheriff's Department Deputies, State Park Rangers, and Chelsea Police raided an illicit party in a field off Riker Rd., behind the Inverness Country Club golf course.

Michael and Richard Bentley, 17-year-old twins of 6704 Clear Lake Rd., and one juvenile, were arrested by Sheriff's deputies on charges of being disorderly persons as police descended on the grove at approximately 12:06 a.m.

A substance believed to be marijuana was found on all three youths. Pending verification by the State Police Crime Lab, additional warrants for the arrest of the Bentley brothers for possession of marijuana will be sought by the Washtenaw County Sheriff's Department, according to Sheriff's Deputy Robert Aeillo.

Aeillo also said that the department will petition Washtenaw County Probate court for a hearing for the juvenile on the disorderly person charge, and will also seek a hearing from that court on a possession of marijuana charge, if the crime lab report is positive.

Approximately 35 area teens had been present at the party. Deputy Aeillo said, however, only the three arrested were believed to be involved in criminal activity.

The sheriff's department had received a tip about the party earlier in the evening, and arranged the raid.

According to Aeillo, the Bentley youths will be arraigned in 14th District Court upon Judge Patrick J. Conlin's return to the bench. Fourteenth District Court sessions were not held this week since Judge Conlin has been acting Circuit Court Judge during the illness of this father, Circuit Court Judge John W. Conlin.

## George Staffan Now Heads Kiwanis Club

Kiwanis Club of Chelsea added two new members and elected a new slate of officers for the 1971-72 year at its regular weekly meeting, Monday night.

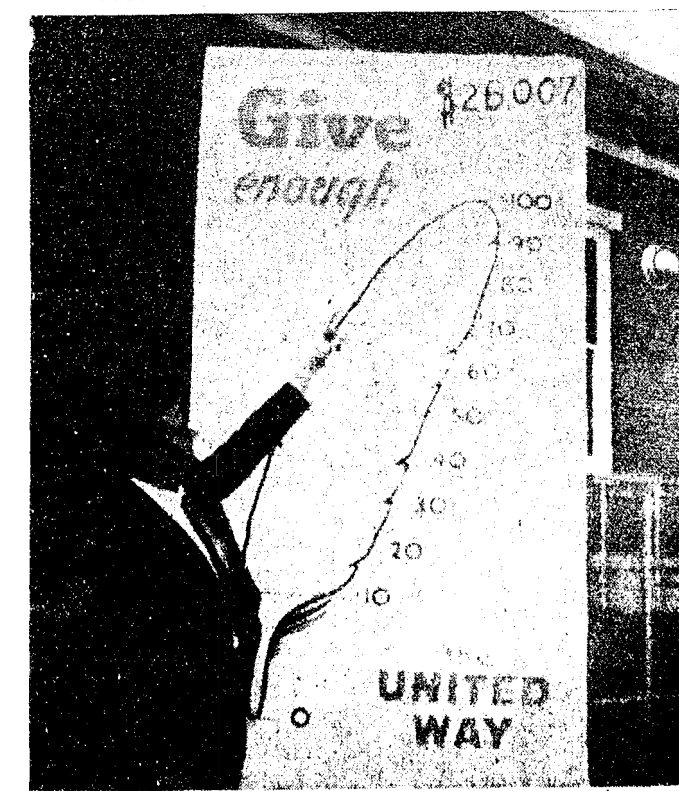
George Staffan was elected club president, Louis Burghardt, first vice-president, and Charles Cox, second vice-president.

Paul Schaible, George Palmer and the Rev. John Morris were elected to two-year terms on the Kiwanis board of directors.

Norman Bauer and Sam Vogel were inducted into the club. Sheridan Springer, lieutenant governor for Division 10, presided at the induction of both the new members and new officers. Springer, a member of the downtown Ann Arbor club, brought four other Ann Arbor club members to aid in the official ceremony.

Recognition was given to Walter Zeeb who has served as president of the club for the past year, and to V. O. Johnson, Luther Kusterer and Sam Johnson, all of whom had completed two years on the club's board of directors.

Mrs. Gladys Sharp is a patient room 142 of the Chelsea Community Hospital.



GOAL ORIENTED: James Hoffmeyer, campaign chairman for this year's Community Chest drive, is definitely "goal oriented" as he points to the \$26,007, 100 percent mark on the chest's feather "thermometer" installed outside the Chelsea Post office this Tuesday morning. The Chest Campaign opens Sunday, Oct. 10, and will officially end Oct. 23.

## Cornerstone Laying Attended By 150

More than 150 people from the Chelsea area witnessed the cornerstone laying ceremonies at Our Savior Lutheran church, 1515 S. Main, Sunday, Oct. 3.

The laying of the cornerstone marks the final stage in the construction of the new church. Now that the large interior beams have arrived, the building is expected to be complete within the next six to eight weeks.

Officiating at the ceremony were the Rev. William Keller, organizer of the congregation and its new pastor, and the Rev. Norbert Mueller of St. Paul Lutheran church in Ann Arbor who delivered the afternoon's sermon.

Also participating in the ceremony were three representatives of Butcher & Willits, Ann Arbor contractors who built the church, and two architects representing Merritt, Cole & McCallum, the Farmington firm which designed the building.

The new church will have a church office, a nursery room, a kitchen and storage and furnace rooms, in addition to the narthex and nave.

The narthex is separated from the nave by a glass partition, and can serve as a cry room or overflow space, as well as the main entrance of the church.

The nave, which features a free-standing altar, can be divided into as many as eight separate rooms by folding doors.

The church will be decorated in brown and gold colors which will be echoed in the narrow clerestory windows.

Included in the cornerstone are photographs of the various aspects of the church's life and growth in the two years since its inception. A copy of the church charter, its constitution and by-laws, a list of charter members, present members, and the present officers of the congregation, church committees and other organizations in the parish.

The cornerstone also holds a full set of the architect's plans, both for the present building and future additions, a copy of the Sept. 30 edition of The Chelsea Standard, and a small sample of current coins.



CORNERSTONE LAYING CEREMONIES: The Rev. William Keller, pastor of Our Savior Lutheran church (left), Arthur Jarve, chairman of the building committee (front right) and Duane Layher, treasurer of the congregation, smile broadly following the cornerstone laying ceremonies at Our Savior Lutheran church, 1515 S. Main, Sunday, Oct. 3. The new church, which has an area of 4,275 square feet, is expected to be complete in the next six to eight weeks.





## Washington Report by Congressman MARVIN L. ESCH

Just recently, and with only a few dissenting votes, Congress repealed the Emergency Detention Act of 1950 that became law over President Truman's veto 21 years ago. I have long been committed to repeal of this legislation and it is gratifying to see that the overwhelming majority of the members of the House of Representatives shared my concern and finally got around to wiping this legislation from the books.

I am sure that most Americans have long since forgotten that a law was ever enacted that permitted detention camps in the United States. It is wholly alien to our principles. The recent action of the House prohibits the establishment of such detention camps and repeals the existing law which established authority for the establishment of such camps. Over recent years I have sponsored measures almost identical in language to the one we just approved.

Unquestionably, the President of the United States has great emergency powers. I believe we pos-

sess inherent in those powers adequate and sufficient safeguards for the nation's internal security in times of peril. In seeking to protect our country against insurrectionists or saboteurs we certainly can do it in such a way so that we maintain personal freedom and not violate our national spirit.

In the 20 years that the Emergency Detention Act has been a law of the land its provisions were never invoked. It actually came into being long after the United States interned 100,000 Japanese-Americans in the early forties. The overwhelming majority of Americans who were familiar with the law must have viewed it as extremely offensive. I am sure they will agree that Congress acted judiciously in taking repeal action.

The vote clearly demonstrated Congressional concern that we must not allow ourselves to become captives of hysterical excesses bred out of fear and apprehension.



## Uncle Lew from Lima Says:

DEAR MISTER EDITOR:

Ed Doolittle give the fellers a report Saturday night on his airplane trip to see his daughter that works in the city. It was the first time Ed and his old lady had ever been on an airplane and Ed said his old lady told him she like the ride, but that she never out all her weight down in the airplane after it left the ground.

Ed said the flying above the clouds was really somepun, but everything else about the trip was hurry up and wait. He said it took more time to get from the airport to his daughter's apartment building than it did to fly to the city. Furthermore, Ed allowed, them big roads that run thru the city had four lanes running each way packed full and one lane on each side jest to pick

up the pieces, and the sky over the airport was near about as full.

General speaking, reported Ed, this country must be about to have a stroke, like a persons does when his arteries gets plugged up. They is to many folks trying to go to many places til pritty soon we jest ain't going to be able to git there from here, was Ed's words.

Clem Webster broke into Ed's report to say he was agreed about the country's arteries. Clem said he had saw this piece in one of his magazines where we was going to have to change the country's hole transportation system or change the way the folks live in this country. Clem was of a mind that transportation is so important in a country cause it makes living easy, not jest moving easy.

### Howell Livestock Auction

The Wise Owl Says Ship to Howell  
SALE EVERY MONDAY, 2 p.m.  
Phone 546-2470, Bim Franklin  
Mason 677-8941

### Market Report for Oct. 4

**CATTLE**—  
Good to Choice Steers, \$22 to \$24  
Good-Choice Heifers, \$22 to \$24  
Fed-Choice Steers, \$22 to \$24  
UT-Std., \$22 and down.

**COWS**—  
Heifer Cows, \$24 to \$26  
UT-Commercial, \$21 to \$23.50  
Canner-Cutter, \$18 to \$21  
Fat Beef Cows, \$19 to \$21

**BULLS**—  
Heavy Boloena, \$27 to \$29  
Light & Common, \$26 and down.

**CALVES**—  
Prime, \$44 to \$48  
Good-Choice, \$38 to \$44  
Heavy Deacons, \$40 to \$48  
Cull & Med., \$30 to \$40

**FEEDERS**—  
400-600 lb., Good to Choice Heifers, \$28 to \$32  
400-500 lb., Good to Choice Steers, \$27 to \$29  
300-500 lb., Holstein Steers, \$20 to \$23  
300-500 lb., Holstein Heifers, \$25 to \$28  
Commercial-Med., \$25 and down.

**CHEEP**—  
Woolled Slaughter Lambs:  
Choice-Prime, \$26 to \$28  
Good-Choice, \$23 to \$26  
Slaughter Ewes, \$4 to \$9  
Feeder Lambs, all weights, \$23 to \$26

**HOGS**—  
200-250 lb., No. 1, \$20.50 to \$21.50  
200 lb. and up, \$19.50 to \$20.50  
200 lb. and up, \$17 to \$19.50  
Light Hogs, \$20 and down.

**SWINE**—  
Fancy Light, \$16.50 to \$17  
200-250 lb., \$16 to \$16.50  
500 lb. and up, \$15 to \$16

**Boars and Stags:**  
All Weights, \$13 to \$16

**Feeder Pigs:**  
Per Head, \$8 to \$13

**HAY**—  
1st Cutting, 60c to 90c  
2nd Cutting, 90c to \$1.25

**STRAW**—  
Per Bale, 50c to 70c

**COWS**—  
Tested Dairy Cows, \$800 to \$400  
Tested Beef Type Cows, \$200 to \$800

Established 1871 **The Chelsea Standard** Telephone GR 5-5581  
Excellence Award by Michigan Press Association  
1951-1952-1960-1964-1965-1966  
Walter P. Leonard, Editor and Publisher

Published every Thursday morning at 800 North Main Street, Chelsea, Mich. 48118, and second class postage paid at Chelsea, Mich., under the Act of March 3, 1879.

ADDRESS CORRECTION REQUESTED

Subscription Rates (Payable in Advance)

| In Michigan:          | Outside Michigan:     |
|-----------------------|-----------------------|
| One Year: \$4.00      | One Year: \$6.00      |
| Six Months: \$2.25    | Six Months: \$3.50    |
| Single Copies: \$ .15 | Single Copies: \$ .20 |

Service men or women, anywhere, 1 year \$4.00

MEMBER **NATIONAL NEWSPAPER** Association - Founded 1888

National Advertising Representatives: **MICHIGAN NEWSPAPERS, INC.**  
267 Michigan Ave.  
East Lansing, Mich. 48823

## ★ MICHIGAN MIRROR ★

By Elmer E. White, Secretary, Michigan Press Association

**Proposals Proliferate**

A statehouse veteran looking forward to the November, 1972, General Election recently suggested that the contest for the U. S. Senate and for Michigan's 21 electoral votes may become of secondary interest by election day. The more interesting battle may be for a Senate seat.

He spoke only half in jest, for there was some truth in the observation.

Barring unforeseen circumstances, Michigan will probably go for whomever the Democrats nominate for President next year. The state's electorate has never really liked Richard Nixon. That leaves only the contest between Sen. Robert Griffin and whomever the Democrats pit against him to stage a state-wide race for elective office.

Contrasting with this rather skimpy national contest card is a smorgasbord of meaty issues now being prepared for the public in the form of constitutional amendments and one proposed law.

If those now circulating petitions around Michigan all have their way, Michigan voters will decide in November, 1972:

- whether they want to abolish one of the two houses of the legislature and give the state a one chamber legislative body.
- whether they want to (a) abolish the property tax for school operations or (b) abolish the property tax for schools and at the same time allow a graduated income tax for the state.
- whether they want to legalize abortions for any pregnant woman upon demand during the first 120 days of pregnancy.
- whether they want to ban the possession of hand guns in Michigan except for police officers.

## UM's Billy Taylor Named October's Athlete of Month

Biff Taylor, All-Big Ten running back from the University of Michigan, has been named winner of the "Sport Magazine College Athlete of the Month Award" for October, according to an article in the current issue of the magazine.

The award, presented for "outstanding contributions toward a better world through personal involvement," goes to Taylor for his work with ghetto youngsters in Barbenton, O., and San Diego.

Taylor, who grew up in Barbenton, spent the summer after his freshman year there as program director of the community's new youth center. "They were looking

## Students Commended

(Continued from page one)

cent of all those taking the examinations.

The commended students ranked just below the 15,000 National Merit Semifinalists announced this September. Charles Lane, son of Mr. and Mrs. Charles Lane, was the only Semifinalist from Chelsea High school.

Edward C. Smith, president of National Merit Scholarship Corporation said, "Although commended students advance no further in the National Merit Scholarship competition, their standing in this nation-wide program deserves public recognition. Their high performance on the NMSQT gives promise of continued success in college."

The letters of commendation from NMSC will be presented to the four during the Senior Recognition program next June.

## Open Blood Donor Clinic Slated Friday

An open blood donors clinic will be held from 1 to 7 p.m. Friday, Oct. 8, at the Washtenaw County Red Cross Chapter Headquarters, 2729 Packard Rd., Ann Arbor.

The clinic will serve donors who wish to replace blood for hospital patients; groups which do not hold their own clinics; and members of groups which need more donations in order to qualify under the Red Cross "20 percent Plan."

**MONEY TROUBLE?**  
ONE PLACE TO PAY!  
Credit Management Service  
662-2565  
215 South Fifth Ave.  
Ann Arbor  
State Licensed and Bonded

## JUST REMINISCING

Items Taken from the Files of The Chelsea Standard

### 4 Years Ago ...

Thursday, Oct. 12, 1967—

Two Manchester teens were arrested Sunday in the recent rash of break-ins in and around Chelsea. Officer David McCormick of the Chelsea Police Department surprised the teens while attempting to break into Schumm's restaurant on Sunday, Oct. 9. The boys fled into a nearby corn field, temporarily eluding police, but an empty car parked on I-94 near M-52 looked like it might belong to the boys, so a sheriff's department deputy merely waited for them in the back seat. One youth was apprehended on his return to the car, and he gave the name of his companion. Under questioning, the two boys implicated three others in the thefts, which have hopefully been ended.

The new press box at the Chelsea High school athletic field, donated by the Class of 1966 and the Chelsea Jaycees, will be finished in time for the Homecoming festivities this year. The press box, with room for the PA system, scoreboard control operators, spotters and scouts for both teams, a photographer, time keeper, announcer, and, of course, the press, replaces a "crow's nest," atop a pole on the 50-yard line.

Martha Ewald and Mary Tandy of the freshman class, Patty Bauer and Debbie Weiss of the sophomore class, Shelly Baize and Chris Frinkle of the junior class and Lynn Faist and Janice Stephens of the senior class are the lovely young ladies vying for the honor of Homecoming Queen this year. The queen will be chosen on the afternoon of the big homecoming game against Lincoln.

Chelsea Bulldogs won their first game of the season last Friday night, defeating Milan, 18 to 0, in a game played at Milan. Chelsea dominated from the first quarter to the last, picking up 339 yards rushing and 75 yards in the air. Chelsea's defense held the Milan Reds to a 435-yard total.

Mrs. Axel (Anna) Nielsen of Copenhagen, Denmark is visiting her brother, Anton Nielsen and his wife for two weeks during her first visit to the United States. Mrs. Nielsen bears the same married name and maiden name, Nielsen being the Danish equivalent to Smith.

The most emotionally charged of the issues by far is the abortion reform proposal, which could make the parochial fight look like a dull high school debate.

Abortion reform contains the church-state element of parochial and religion in any argument can make it heated. It also involves the very basic legal question of when life begins.

Should the abortion issue reach the ballot, debate is sure to include such terms as "murder," "freedom from slavery," and any other emotional word the combatants can contrive.

The reform proposal is different from the others, however, in that it would be in the form of a law rather than a constitutional amendment. It would have much the same effect as an amendment, however, since the courts have ruled once the people vote a law in or out, only another vote of the people can change that decision.

### 14 Years Ago ...

Thursday, Oct. 10, 1957—

The annual kick-off luncheon will open this year's Community Chest drive Monday, Oct. 14. The Chest has a goal of \$13,311 this year, which Harold Jones, president of the Community Chest Board of Directors, has said can be raised if people in the community give as much this year as they gave last. The Chest drive raised \$13,452 last year.

Chelsea Kiwanis Club elected a new slate of officers at their weekly dinner meeting. James Daniels was elected president, Leo Bishop, first vice-president, William Rich, second vice-president, Paul G. Schaible, Jr., treasurer, and Dr. V. R. Hanson, A. S. Penhalligon, Arthur Lindauer, and Charles Lane as directors.

University High school in Ann Arbor was the nemesis for Chelsea's Bulldogs who lost their first game of the season to the Cubs

the foundation, which fights infantile paralysis, said that the Chelsea contribution was considerably greater than that raised in any city of a comparable size. Among those Chelsea residents donating their time to the drive were Janet Hutzler, Alfred D. May, Paul F. Niehaus, George Doe, Walter Harper, M. W. McClure, Carl J. Mayer, Bernice Schneider, Catherine Dorer, Dorothy Lentz, Anna Werner, Magdalen Weber, Loretta Doll and Mary Kniss.

### 34 Years Ago ...

Thursday, Oct. 7, 1934—

Arrangements have been made by Chelsea village officials for the purchase of a tract of land from the Chelsea Grey Iron Castings Co. to ultimately be improved for use as a park. The land, approximately five acres, is located north of the factory buildings.

A petition has been filed in circuit court at Ann Arbor for an injunction restraining the state highway department from taking possession of a strip of land on the Alfred Lindauer farm as part of the right-of-way for the new US-12 highway near Chelsea.

Following the September condemnation hearings, it was ruled that there was a need for condemning the land for highway purposes and uphold that the nine farm land owners affected had been offered fair amounts for their land. Four of the nine owners are reported to have agreed to accept the amounts offered by the state highway department, but Mr. and Mrs. Lindauer and four others have refused. The Lindauers, whose farm would be divided by the new highway so that the barns would be one one side and the bulk of the farm on the other, claim that the amount offered is not sufficient compensation.

**SING-ALONG MUSIC at INVERNESS INN**  
NORTH LAKE  
Saturday Nights - 9:30 p.m. to 1:30 a.m.  
Music By  
**JIM ROMINE and GARY SCRIPTER**  
YOUR FAVORITE SANDWICHES  
SHRIMP, CHICKEN & FISH DINNERS  
BEER - WINE - LIQUOR

**IF YOUR ROOF IS HURTIN' Call Burton!**

- ★ Old and New Roofs
- ★ Hot Tar and Metal Roofs
- ★ Aluminum Siding
- ★ Aluminum Awning and Storm Doors and Windows
- ★ Seamless Aluminum Eaves Troughs and Down Spouts
- ★ Mobile Home or Trailer Skirting

**COOPERATIVE ROOFING & SIDING CO.**  
Call 662-5900 or 662-3288  
Evenings Call Burton Rathburn, 663-0754

## Memorable Portraits in Natural Color



There is no obligation to buy additional portraits; however, extra prints are available in sizes up to 16x20", at reasonable prices.

Quality Portraits are Guaranteed

Age limit three weeks to twelve years. One per family. Groups at \$1.00 per additional subject.

No Appointment is Necessary.

**5x7 Portrait 38¢**  
Fri., Oct. 15 9 a.m. to 5:30 p.m.  
and  
Sat., Oct. 16 9 a.m. to 5:30 p.m.  
Plus 60c Handling and Delivery

**Dancer's Dept. Store**  
Chelsea

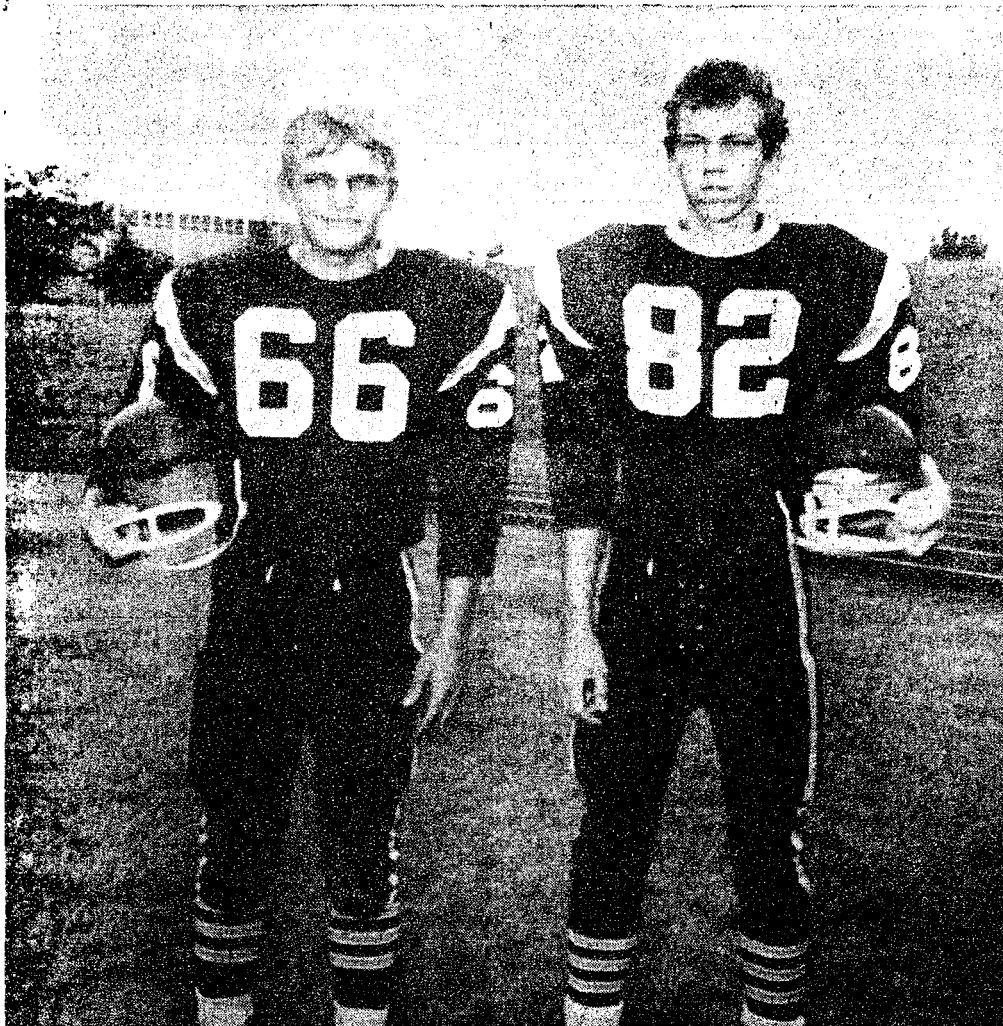
## CHELSEA JAYCEES CHICKEN BARBECUE SUNDAY, OCT. 10

Corner of M-52 and Old US-12, Chelsea  
Serving Starts at 11 a.m.

2,500 Dinners Will Be Served  
PUBLIC INVITED  
\$1.75 per serving  
— Sponsored By —  
**CHELSEA JAYCEES**  
BOB UPDEGRAFF, Chairman



## Gridders of the Week



LARRY HOPKINS (66), a 5'8", 140-lb. guard, is playing his fifth year of football, his second year of varsity ball, this fall. Larry is also a wrestler, a member of FFA, the Methodist Youth Fellowship and 4-H. A 4-H member since his grade school days, he said that 4-H is his main hobby. Although he started with garden projects, he has been raising steers for the past several years. Because of his interest in farming, he hopes to attend Michigan State University to major in agriculture. Following his graduation from college, he may, he said, continue the farming tradition in his family. He and his sister, Janice, live with their parents, Mr. and Mrs. E. Jay Hopkins, at 16975 M-52.

DENNIS LANDWEHR (82), might be called the Bulldogs' roving end, since he has traveled and camped extensively, roaming as far as Nova Scotia, Canada, during the summer. He's in his fifth year of football this fall, his second year on the varsity. He is a member of the Key Club, the Varsity Club, and plays clarinet in the Chelsea High school band. An outdoorsman, he hunts, fishes, snowmobiles, and back-packs. In addition to all his other outdoor activities, Dennis also runs his own odd-job business during the summer, and in his spare time during the school year. He plans to study drafting following his graduation from high school. The son of Mr. and Mrs. Duane Landwehr, 18000 Cavanaugh Lake Rd., he has two brothers, Ron and Mike.

## Cross Country Team Starts Developing

It was their best showing, and their second win of the season, as Chelsea's cross country team defeated Dexter, 18 to 42, Tuesday afternoon.

According to Coach Pat Clarke, the team is definitely beginning to show its potential after being handicapped earlier in the season by its newness and lack of practice.

All the Chelsea runners who have been with the team since it started practicing some four weeks ago have cut their times dramatically, some by almost three minutes.

Leading the way for Chelsea Tuesday were senior co-captain Dave Buxton and Dan Hoover who placed first and second, respectively.

Buxton ran the two and one-half mile course in 14:37, and Hoover trailed by 20 seconds, coming in with a 14:57 finish.

Sophomore Mike Agopian finished fourth with a time of 15:08, Jim McGinn followed in fifth with a time of 15:11. Howard Schenk finished sixth for Chelsea with a 15:15 time, and Jon Schenk came in with 15:44 to take eighth.

Two new runners, Robin Boyer and Lee Ferguson, captured 10th and 13th places, respectively, with 16:05 and 16:37 finishes.

The times for Ferguson and Boyer were especially good since they've only been running for one week, Coach Clarke said. "They've really been working hard," Clarke added, "and I'm really proud."

For the first time this year, Clarke was well satisfied with the performance of the entire team. "The times are now about what they should be," Clarke said, "and the runners have started to jell as a team. I'd say," Clarke continued, "that this was our finest team effort so far."

Clarke is optimistic not only about the balance of the season, but also about next year's prospects. The bulk of the team members are underclassmen. Howard Schenk, Mike Agopian, Lee Ferguson, Jon McGinn and Robin Boyer will all be eligible to run again next year.

Clarke was less than happy with last Thursday's meet with Class A Jackson Northwest, however. It was Chelsea's worst defeat of the season, as the team accumulated 50 points, the lowest possible cross country score.

Jackson swept the first seven places and John Schooley broke the Jackson Northwest varsity cross country record with his 13:35 first-place finish.

Chelsea's top finisher was eighth place Dave Buxton, who turned in his best performance of the season with a 14:42 finish, almost one minute less than his previous best time.

Dan Hoover finished ninth, Mike Agopian, 10th, Jon Schenk, 11th, and Howard Schenk finished 12th.

All the runners cut 40 seconds or more of their previous times, but Class A Jackson's tremendous advantage in team size and experience were too much for Chelsea to overcome, Clarke said.

Chelsea will have their second home meet of the season this afternoon, a rematch with the South Lyon team which defeated the harriers badly two weeks ago. The meet will begin at the Chelsea athletic field at 4 p.m.

## 12-Year-Old Girl From Southgate Nabbed By Police

A 12-year-old girl who had been missing from her Southgate home since Sept. 12, was picked up in Dexter Friday afternoon at 4:50 p.m. by Police Chief Edward Monaghan and Policewoman Ruby Brown.

The Joseph C. Guindons, had been passing for 18 on false identification she had picked up while hanging around the diagonal on the U-M campus, according to her report.

She told police, while waiting for her parents to pick her up,

that she had hung around Ann Arbor then Dexter and Chelsea before hitch-hiking to New Mexico, where she worked in a circus. She lost her ID there and was given a card by the sheriff's office of that state attesting that she was 18.

While in Dexter she had been in the company of two local youths and claimed she made her way by panhandling. She was turned over to the custody of her parents later that day. A 12-year-old, she stands 5'4" tall and can pass physically for older.

### SEA STORY!

Seahorses, growing no longer than six or seven inches at the most, can be found in the waters off Bermuda.

**ON SALE**  
For the  
**First Time Ever**  
**SUPP-HOSE®**  
Panty Hose and Stockings  
October 4-11

The greatest opportunity ever to purchase Supp-hose Panty Hose and Stockings!

Now, while they are ON SALE. Stock up on your favorite styles and colors at terrific savings. Or try something new. There's a Supp-hose panty hose or stocking style right for whatever the occasion.

So take advantage of these terrific savings now!!!

**\$5.95 Panty Hose**  
**2 pairs 9.00**  
You save \$2.90  
Single Pair \$4.95

**\$4.95 Stockings**  
**2 pairs 7.90**  
You save \$2.00  
Single Pair \$4.25

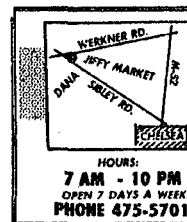
**DANCER'S**  
Chelsea's Friendly  
Dept. Store

**SPECIAL**  
thru Wednesday, Oct. 13, 1971  
**HOTFUDGE BROWNIE DELIGHT**  
**54¢**

Home of fine Brazier Foods

**Dairy Queen**  
**brazier.**

901 S. MAIN ST., CHELSEA PHONE 475-2677



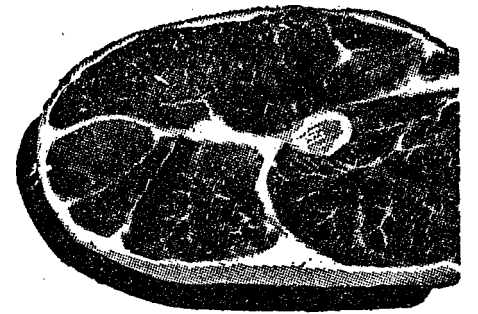
**Jiffy market**  
BIG ENOUGH TO SERVE YOU.....SMALL ENOUGH TO KNOW YOU!  
Corner of SIBLEY & WERKNER RDS.....CHELSEA, MICHIGAN

SALE PRICES EFFECTIVE THURSDAY, OCT. 7, THRU SUNDAY, OCT. 10, 1971.

**Store Hours Are 7 a.m. to 10 p.m. 7 Days A Week**

U.S.D.A. CHOICE BEEF

**ROUND or SWISS \$1.09**  
**STEAKS**



|   |   |   |                                     |
|---|---|---|-------------------------------------|
| BOSTON BUTT<br><b>PORK ROAST</b><br><b>49¢ lb.</b>              | <b>PORK STEAKS</b><br><b>59¢ lb.</b>                              | <b>CUBE STEAKS</b><br><b>\$1.19 lb.</b>                                 | <b>BEEF LIVER</b><br><b>39¢ lb.</b> |
| SHAMROCK U. S. GRADE A MEDIUM<br><b>EGGS</b><br><b>39¢ doz.</b> | PESCHKE'S HICKORY SMOKED<br><b>BACON</b><br>1-Lb. Pkg. <b>59¢</b> | FRESH<br><b>HAMBURGER</b><br>Satisfaction Guaranteed.<br><b>69¢ lb.</b> |                                     |

16th ANNUAL CHELSEA JAYCEES  
**CHICKEN BAR-B-Q Sunday, Oct. 10**  
Corner of M-52 and Old US-12 - Serving from 11 a.m. Until Sold Out!

COMPLETE DINNER

½ BARBECUED CHICKEN  
COLE SLAW - CHIPS  
ROLLS - BUTTER

Plus Complete Table Service

**ALL FOR ONLY!**

**\$1.75**

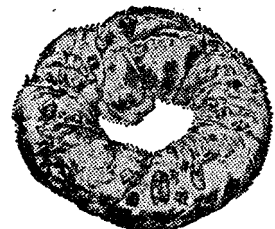
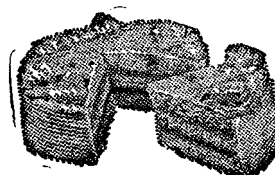
For Your Support Our Jaycees Serve You This Delicious Meal.  
**SUPPORT YOUR LOCAL JAYCEES - THEY SUPPORT OUR COMMUNITY.**

RISDON'S HOMOGENIZED

**MILK** ½-Gal. Crtn. **39¢**

KLEEN-MAID WHITE

**BREAD** 1 ¼-Lb. Loaf **19¢**



**JIFFY MARKET**  
**FRESH BAKERY**

Pies - Cakes - Rolls - Cookies  
Bread - Cup Cakes - Donuts - Others  
Old German Pretzels Wed. & Sat. Afternoons.

- SPECIAL -

**LARGE DONUTS**

Plain, Sugared or Cinnamon **69¢ doz.**

FRESH MERCHANDISE ARRIVES 1 P.M. EACH AFTERNOON.

|  |  |  |  |
|--|--|--|--|
| U.S. NO. 1<br><b>McINTOSH APPLES</b><br><b>12¢ lb.</b> | POPS-RITE<br>White or Yellow<br>2-Lb. Bag <b>35¢</b><br>4-Lb. Bag <b>69¢</b> | SWEET<br><b>APPLE CIDER</b><br>1 Gal. Jug <b>99¢</b> | Mr. Boston Pre-Cooked<br><b>FISH STICKS</b><br>2-Lb. Pkg. <b>99¢</b> |
|--|--|--|--|

**A SPECIAL SPECIAL!**

**HEATH VANILLA ICE CREAM**  
**DEVIL CAKE ROLL**

12-Oz. **39¢**

**MARATHON GAS PUMPS** LOCATED AT **JIFFY MARKET**  
Gas as well as Groceries - Meats - Beer - Wine - Bread - Pop - Ice Cream - Household Items  
Milk - All at Everyday Low Supermarket Prices!

REGULAR GAS

**33.9 gal.**

Includes All Taxes

Treat Your Family to a  
**JAYCEE CHICKEN DINNER**

and a  
**CHELSEA COLOR TOUR**  
**SUNDAY, OCT. 10th**

PREMIUM GAS

**37.9 gal.**

Includes All Taxes

**GAS PUMPS & STORE OPEN 7 a.m. to 10 p.m. 7 Days a Week**



**Ads  
Taken  
Till 5 p.m.  
Tuesday**

# IT'S EASY TO BUY-SELL-RENT- HIRE & FIND WITH

# WANT ADS

**Just  
Call  
GR 5-3581**

## WANT ADS

### The Chelsea Standard

#### WANT AD RATES

PAID IN ADVANCE—All regular advertisements 10 cents for 25 words or less, each insertion. Count each figure as a word. For more than 25 words add 2 cents per word for each insertion. "Blind" ads or box number ads 35c extra per insertion. CHARGE RATES—Same as cash in advance, with 10 cents bookkeeping charge if not paid before 5 p.m. Tuesday preceding publication. Pay in advance, send cash or stamps, and save 15 cents. DISPLAY WANT ADS—Rate, \$1.10 per column inch, single column width only. 8-point and 14-point light type only. No borders or boldface type. Minimum 1 inch. CARDS OF THANKS or MEMORIALS—Single paragraph style, \$1.00 per insertion for 50 words or less; 2 cents per word beyond 50 words. COPY DEADLINE—5 p.m. Tuesday week of publication.

ROLL TOP DESK—Ash metal block. Ph. 428-8200. x19  
PLEASE GIVE ENOUGH to count. -18

### This Week's Special 1971 PINTO

Many Extras  
Only  
\$1995

#### USED CARS

'71 Lincoln 4-dr., air  
'70 Galaxie 2-dr. hardtop  
'70 Thunderbird, with air  
'69 Galaxie 500 2-dr. hardtop  
'67 Mercury 2-dr. hardtop  
'66 Thunderbird, air.  
'66 Buick LeSabre  
'66 Galaxie 500 XL with air  
'65 Fairlane 4-dr.

#### TRUCKS

'69 Ford 1/2 ton  
'69 Ford 1/2 ton  
'67 International 1/2 ton pick-up, \$1995  
'65 Ford 1/2 ton  
'69 Dodge 1/2 ton  
'68 Chevrolet 1/2 ton

See Us About  
Demonstrators  
and Driver  
Education Cars

#### PALMER FORD

Open Mon., Wed., Thurs., Till 9:00  
Chelsea GR 5-3271 x15tf

LOST—Grill for 8N Ford tractor either on Storer Rd. or N. Territorial. Phone 475-2978. x16

FIREPLACE SCREEN and accessories for sale. Phone 475-2986. x16

SAVE Big! Clean rugs and upholstery with Blue Lustré. Rent electric shampooer \$1. Dancer's. 16

#### All Insurance Needs

In the convenience of your own home — or mine

#### N. H. Miles, Allstate

Call GR 5-8394 after 6 p.m. 45tf  
PLEASE GIVE ENOUGH to count. -18

## WANT ADS

BOARDING, trimming, training. Town and Country Kennels, Jackson Rd. at Baker. NO 8-7200. 7tf

### Gem Travel Trailers and Campers

PICK UP COVERS  
4" ————— \$100.00  
26" ————— \$179.00 and up

#### Triangle Sales

Chelsea 475-4202 40tf

### CLOGGED SEWER

Reynolds Sewer  
Service

We Clean Sewers Without Digging  
Drains Cleaned Electrically  
FREE ESTIMATES  
2-YEAR GUARANTEE  
Phone Ann Arbor NO 2-5277  
"Sewer Cleaning Is Our Business—  
Not a Side Line" 88tf  
PLEASE GIVE ENOUGH to count. -18

### 1971 Clearance Sale

All of these cars qualify for Excise Tax Return if removed by Federal Government.

1971 Olds 98 4-dr. hardtop (air cond.) full power. Sticker, \$5956.69. Sale, \$4874 (Demo)  
1971 Cutlass Supreme 2-dr. hardtop (air cond.) Sticker price, \$4561.71. Sale, \$3900 (Demo)  
1971 Opel station wagon, auto. trans. Sticker, \$2672.68. Sale, \$2400.

#### USED CARS

1971 Skylark 2-dr. hardtop (real nice) ————— \$3195  
1970 Ford Ranch Wagon (nice) ————— \$2195  
1970 Nova 2-dr., vinyl top (307) ————— \$1995  
1969 Electra 225 2-dr. hardtop (air cond.) ————— \$2995  
1969 Electra 225 4-dr. sedan (air cond.) ————— \$2895  
1969 Chrysler Newport Custom 4-dr. (air cond.) ————— \$2195  
1969 Chrysler Newport 4-dr. sedan ————— \$1895  
1969 Opel Spt. 2-dr. DLX, 10,000 actual miles ————— \$2195  
1968 Toronado (air cond.) ————— \$2195  
1968 Cutlass 2-dr. hardtop (vinyl top) ————— \$1695  
1968 Volkswagen Ghia ————— \$1295  
1967 Olds Cutlass 4-dr. sedan ————— \$1295  
1966 Olds 88 4-dr. sedan ————— \$ 895  
1966 Pontiac 4-dr. sedan (real nice) ————— \$ 895  
1966 Falcon 2-dr. sedan ————— \$ 595  
1965 Buick Special 4-dr. (one owner) ————— \$ 595  
1965 Olds Cutlass 4-dr. sedan \$595  
1965 Rambler 4-dr. sedan (air cond.) ————— \$ 495

#### SPRAGUE

Buick-Olds-Opel, Inc.  
1500 S. Main St., Chelsea  
Phone 475-8664 16tf

FOR SALE—Registered POA mare, 13-plus hands. Strong Appaloosa color, quarter type, contest and trail class winner. Has been gr. champ. at halter. Excellent riding mare for anyone, \$300. Phone 475-2579. x16

FOUND SUNDAY—On Dexter-Chelsea Rd., small silver-gray male dog. No collar. Mostly miniature collie. Call 475-7163. x16

## WANT ADS

ROBERT PATRICK for home improvement, building and maintenance. Ph. 475-7460. 45tf  
PLEASE GIVE ENOUGH to count. -18

HAMMOND ORGAN teachers wanted to teach in their own homes. Call Grinnell Brothers, Ann Arbor, 682-5687. 84tf

CALL FRANK for all your carpet cleaning jobs, morning or weekend. Needs only 3 hours to dry. Only 10c per square foot. Phone now for free estimate, 761-4222. All work guaranteed. 83tf

PIANO TUNING, Chelsea and area. Facilities for reconditioning and rebuilding. Used piano sales; reconditioned grands and verticals. E. Eklund, 426-4429. x50tf

### Contractor Servicing Chelsea, Dexter and Manchester Areas

Complete Home Remodeling  
Inside and Outside

Specializing in extra living space, recreation rooms, kitchens and paneling. Installing all aluminum products, 5" eavestroughs, custom-made awnings, windows and doors, aluminum siding in many selected colors and styles.

Please Call

DALE COOK  
Chelsea 475-8863 20tf

### CHELSEA

School District  
Five Beautiful  
Country Sites  
in  
Noah Heights  
Adjacent to Half  
Moon Lake State Park

Model Open 2-6  
Sat. and Sun.

Any time by appointment

#### Featuring

—Carpeting throughout  
—2-car garage  
—Full basement  
—Hotpoint stove and refrigerator  
—All aluminum exterior  
—Concrete porches, sidewalk, gravel drive  
—Storms and screens

COME OUT AND TALK TO US  
ABOUT OUR WIDE VARIETY  
OF HOME PLANS.

We know you will be pleased.

#### W. C. Weber

Construction Co., Inc.  
12290 Jackson Rd., Chelsea, Mich.  
475-2828 683-1935 475-4977

CHELSEA'S PREMIER BUILDER x8tf  
PLEASE GIVE ENOUGH to count. -18

### REAL ESTATE

6 ACRES, Sylvan township building lot. Price: \$8,000. Land contract available.

SYLVAN TOWNSHIP—Well located 64 acres excellent, level land.

#### R. D. Miller

#### REAL ESTATE

Real Estate Broker  
475-7311  
15775 Cavanaugh Lake Rd.  
Chelsea, Mich. 14tf

WANTED—Male orderly, part time evenings. Call Mrs. Dehn, Chelsea Methodist Home, 475-8683. x14tf

### ELECTROLUX VACUUM CLEANERS

SALES and SERVICE

JAMES OOX

Ph. 428-2931 or 428-8221  
Manchester



"Can't you remember anything—just yesterday I told you to remind me to look in the Standard Want Ads for a roofer!"

## WANT ADS

### WORK SHOE HEADQUARTERS

Famous Red Wing Brand  
\$12.95 to \$26.95

#### Foster's Men's Wear

FOR SALE — 2 Suffolk yearling rams. Phone 428-9552. Gregory Seckinger, R. 1, Manchester. 16

WOULD LIKE to care for 3- or 4-year-old child in my home. Ph. Mary Ellen Pierson, 475-8750. 16

ANNUAL WOMAN'S CLUB of Chelsea rummage sale. Oct. 15, 9 a.m. to 5 p.m. Oct. 16, 9 a.m. to 12 p.m. Sylvan Town Hall. 17

PLEASE GIVE ENOUGH to count. -18

FOR SALE — Registered POA weanling filly, loud blanket, blaze, 4 socks, heavily muscled. Excellent prospect for 4-H project. \$150. Phone 475-2579. x16

FOR SALE—300-gal. elevated gas tank with counter, filter and barrel racks, \$75. Phone 475-2579. x16

YARD SALE—Rain or shine. Antiques, collectibles and misc. items, Friday and Saturday, Oct. 8-9, 10 a.m. to 5 p.m. 1036 Guinan Rd., Sugar Loaf Lake. Ph. 475-2242. x16

FOR SALE—30-ft. low priced house trailer. Good underpinning. Ph. 428-3151. x16

### NO HUNTING SIGNS

Now available

#### Chelsea Standard

800 N. Main St.

#### HUNTERS

See us for your gun needs

—ITHACA  
—WINCHESTER  
—REMINGTON  
—CROSSMAN

WE ALSO HAVE:

—DUCK DECOYS  
—DUCK, GOOSE, SQUIRREL, TURKEY CALLS  
—HOT SEATS  
—INSULATED BOOTS  
—GUN CASES  
—CLEANING KITS

AMMO SPECIAL:

Winchester 22 LR. Wildcat  
79c Box, \$7.70 carton  
Winchester 12 ga. No. 6 shot  
heavy load ————— \$3.19 box

Chelsea Hardware 16

## WANT ADS

MEL HARTMAN, residential builder. Free estimates: houses, garages, kitchens. Flat work and roofs. Call 878-6514. 13tf

### WORK SHOE HEADQUARTERS

Famous Red Wing Brand  
\$12.95 to \$26.95

#### Foster's Men's Wear

PEKINESE and Chihuahua puppies, \$20. Phone 475-2426. x16

### A fine selection of

### New and Used Cars

for immediate delivery

### Harper Pontiac Sales & Service

475-5311  
Evenings, 761-2999 1tf

### KNAPP SHOES

For Cushion Comfort

Robert Robbins

475-7282 48tf

### MECHANICS

Hospitalization, uniforms, life insurance, good hourly wage, and time and one-half, at expanding truck and trailer shop.

If you want to get ahead, call 663-0521, ext. 35 for an interview. x16

### SLEEP SOFA SALE

ENTIRE STOCK  
REDUCED 20%  
Now until Oct. 16

### MERKEL

Home Furnishings

PLEASE GIVE ENOUGH to count. -18

## WANT ADS

RADIO AND TV REPAIR. Bill Smith and Bob Lindsay. Ph. 475-4374. x11tf

### SAVE!

Now you can have  
ADMIRAL  
1972 Model  
Color TV  
at 1971 Prices

On display now!

Also, service on all makes TV, radios, stereos and car radios. Plus antenna supplies and installation.

Open Daily Until 7 p.m.

#### PORTER'S TV

212 Buchanan St., Chelsea  
Phone 475-8380

WANTED — Roll-top desk and round table. Ph. 428-8200. x19

## CHELSEA AREA

40-ACRE HORSE FARM—4-bedroom large farm home, modern kitchen, excellent barn. Priced to sell.

1 1/2 ACRES—All brick, 3-bedroom ranch home. Dining room, family room, fireplace, 2-car attached garage. 15 minutes to Ann Arbor on blacktop road. Chelsea schools.

MANCHESTER—Excellent buy, 3 unit income apartment, good location. Priced to sell.

LIVE in the small-town atmosphere of Manchester, only 25 minutes to Ann Arbor. This is one of the original majestic homes in Manchester. It has been completely remodeled. 4 bedrooms and sleeping porch, 2 1/2 new baths, family room, fireplace, dining room, 3-car garage, large lot, 125 x 176, professionally decorated.

71-ACRE FARM, 4-bedroom home, 15 minutes to Ann Arbor. Located near Chelsea on blacktop rd.

LAKE FRONT, year 'round, 4-bedroom home on Sugar Loaf Lake, 2-car garage.

BEAUTIFUL 10-acre building sites. Some have woods and some have streams. Priced to sell.

PORTAGE LAKE — 3-bedroom, year 'round home with lake access. 2 lots and garage, excellent condition.

### Frisinger Realty Co.

Chelsea 475-8681

George Frisinger, 475-2903

Paul Frisinger, 475-2621

Herman Koenig, 475-2613

Hope Bushnell, 475-7180

Serving

Ann Arbor

Chelsea

Dexter

Manchester

Member of Multiple Listing Service 14tf

JUST RECEIVED — Four rolls Lee's rubber backed commercial carpet. Ideal for kitchens and family rooms. Four colors. Regular \$6.95. Sale \$4.95. Merkel Brothers. x18

FOR SALE—1960 23-ft. Covered Wagon self contained travel trailer, less than 1,000 miles. Reese hitch, electric brakes, wiring harness and mirrors. Needs some work, \$1,200. Call 475-7836. x17

### Stoney Ridge

#### Tack Shop

English equipment and apparel. OCTOBER SALE, 20-50% OFF. Summer coats, breeches, sheets, spurs, halters, leads, many more.

9970 Liberty Road  
Chelsea, Michigan x17

### SPIKE'S

#### FLEA MARKET

ANTIQUES and COLLECTIBLES

Every Saturday  
and Sunday

11 a.m. to 7 p.m.

Auctions  
Every Saturday

at 7 p.m.

Dealers and public invited.

4065 Page Ave.  
Michigan Center, Michigan  
(Page Ave. Exit, east 7/10 mile)  
Phone (617) 764-0260 x18tf

FOR SALE—6 purebred Hereford heifers, five with calf at side. Phone 426-4966. x16

## WANT ADS

XEROX COPIES made. Merkel Brothers. 41tf  
PATCHING and PLASTERING. Call 475-7489. 83tf

FOR REAL DOLLAR SAVINGS be sure and see us before you buy any new or used car. Palmer Motor Sales, Inc. Your Ford Dealer for over 50 years. 2tf

FOR SALE—GE electric dryer in good condition. Norge washer, needs repair. Both for \$40. Call 426-8893. -31

### Custom Kitchen Cabinets

and

### Formica Tops

Made to Order

475-2857 32tf

### G. G. HOPPER

Building Contractors

Phone GR 5-5581

Gregory 498-2148 40tf

### 2-CYCO FUEL

For All 2-Cycle Engines

### WHITE GAS

Available at

### Gateway

Sports Centre, Inc. 45tf

PRINTING from John's Shop—for weddings, anniversaries or any occasion. Satisfaction guaranteed. Prompt service, reasonable prices. Phone 475-7500. -21

ALCOA SIDING with Remodeling—Since 1938. Prompt service, professional workmanship. William Davis Contractor. Ann Arbor, Mich. Estim. no obligation. Phone (313) 663-6635. Completed work near you. -x23

### Hearthside Yarn Shop

5450 Conway Road

Yarns, needles, accessories

Free instructions in knitting and crocheting with follow-up assistance.

Orders taken for hand-made items.

Ph. 475-2014 36tf

PLEASE GIVE ENOUGH to count. -18

GARAGE & YARD SALE, 3 families—rain or shine, Saturday, Oct. 9, 10 a.m. to 6 p.m. 527 W. Middle, Chelsea. Beds, snow skis, radio, cassette tape recorder, stuffed animals, dishes, artificial flowers, and lots of miscellaneous items. x16

### FARMS WANTED

We have a specific prospect for a farm of 80 acres or more with a large old home that can be remodeled.

We also have prospects for acreage, with or without buildings. No limit to size.

We will be glad to call and discuss your property with you.

### Spear & Associates

1935 Pauline Plaza

Ann Arbor, Mich.

Bus. 769-5750

Res



## WANT ADS

EE US for transit mixed concrete. Klumpp Bros. Gravel Co. Phone Chelsea 475-2550, 4920 Loveland Rd., Grass Lake, Mich. x4011

RAVEL TRAILERS — 13-ft. and up; 10x55 ft. trailers John R. Jones Trailer Sales, Gregory, Mich. Phone 498-2655.

AR RENTAL by the day, week, end, week or month. Full insurance coverage, low rates. Call Lyle R. Christwell at Palmer Motor Sales R 5-3271.

AR & TRUCK LEASING. For details see Lyle Christwell at Palmer Motor Sales, GR 5-3271.

## WANT ADS

FOR SALE — Decca electric guitar, used, one month. Also, size 9E football shoes, only used once. Phone 693-3228. x4011

APPLES — Pick your own, \$1 a bushel. These apples have not been sprayed. Also pears and plums. Czaplak's Orchard, 1817 Rank Rd., 7 miles west of Chelsea, off Old US-12. x16

FORMAL WEAR RENTAL SERVICE Proms - Weddings - Special Events 6 different colors.

Foster's Men's Wear

## WANT ADS

GUITAR INSTRUCTION. Classical, folk, pop. Emphasis on theory. Only \$3.50 for 1/2 hour. Phone 475-1128. x4011

LAND CONTRACTS PURCHASED. ED. Call R. A. McLaughlin, 475-8888 or (517) 866-7765. x1211

TRENCHING — Water, electrical lines, footings, etc., 4 to 14 inches wide, 0 to 6 feet deep. Call Charles Slocum, 475-7611 evenings. x2611

EXPERIENCED CHILD CARE in my home, any time. Phone 761-8701 after 6 p.m. x2611

## WANT ADS

YEAR AROUND COTTAGE for rent. Chelsea area. Furnished. Couple only, no pets. Ph. 426-4563. x1411

IRONINGS WANTED — Call today, 475-8923. x16

LOST — White toy poodle, Main St., Chelsea. Child's pet. Reward. Phone 475-4011. x16

GARAGE SALE — Good used clothing, dishes, books, some furniture, odds and ends, and toys. Immanuel Christian Youth Club, 134 E. Summit St. All day, Saturday, Oct. 2. x15

ST. BERNARD PUPPIES — Six males, nine weeks old, all shots and wormed. 375. Call Grass Lake 522-4747, 7991 Greenwood Rd. x15

REPAIR SERVICE for household refrigerators, freezers and garbage disposers. Call Bill, 426-8314. x1211

## WANT ADS

FOR SALE — 2 3-year-old Corriedale rams. Phone HA 6-5094. x16

DO YOU NEED masonry work done? Phone Ken Young, 426-3342. Basement laid for 50¢ per block. Free estimates on brick work and fireplaces. x27

OPTICAL SERVICE — Winans Optical, 114 N. Main (Sylvan Hotel), Chelsea, Mich. x16

BIG YARD SALE — Lots and lots of items, furniture, toys, clothes, antiques, car parts, etc. Something for everyone. Come to 1817 Rank Rd., 7 miles west of Chelsea, off Old US-12, and one mile south on Rank Rd. x16

BABYSITTING in my home, day or night, 208 South St. Phone 475-7822. x17

LOST — Half Siamese females; one cream with tiger points and blue eyes, and on Sept. 12, silver spotted tiger, white on chin and under nose. Island Lake at Weikner. Answer to Samantha and Susie. Reward. Call Dr. Clark collect, (313) 356-7360, between 9 a.m. and 6 p.m. weekdays. x17

FREE — Cute little Halloween Kittens to be given away. Kitty litter trained. Phone 475-8087. x16

HELP WANTED — Homemaker service needs female full-time persons to help families and the elderly. Ph. 971-6528. x16

## WANT ADS

WANTED TYPIST Accurate, 55-60 wpm. Apply in Person Chelsea Standard 300 N. Main St. Ph. GR 5-3581

PRIVATE REST HOME — Private, carpeted room available, 14 years experience. Manchester phone 428-8595. x18

LANEWOOD BRICK RANCH — By owner. Three bedrooms, one and a half baths, large family size kitchen, carpet and drapes, full basement, double garage, fenced yard, many extras. Below appraised value. \$36,000. Call 475-2747. x17

FOR SALE — 1966 Baracuda, automatic, bucket seats, good condition. \$350. Phone 475-2929. x16

FOR SALE — Wheelhorse tractor, 6 h.p. 42" mower, snow blade, chains, new lawn sweeper and 2-wheel trailer. All for \$425. Phone 475-8132. x16

JANITOR WANTED approx. 4 hrs. per night, 7 days a week. Write Box OC6, care of Chelsea Standard. x16

WATKINS QUALITY PRODUCTS. Famous for vanilla and spices. Peter Miller, phone 426-4126 after 4:30 p.m. x22

FOR SALE — McIntosh apples, 4 miles south of Manchester on M-52, corner of Bowens Rd. x17

FOR SALE — TV console with radio and stereo. Ph. 475-7436. x17

WILL DO BABY-SITTING in my home. Ph. 475-8508. x17

FOR SALE — 63 Chevy pick-up, 6 cylinder. Phone 475-7631. x17

FOR RENT — Upstairs 4-room apartment with garage, centrally located. For further information call 475-2807. x16

FOR SALE — I have several gallons and quarts of Wooster Seal-Kote paint. Will sell at cost. Phone 475-2142. x16

FREE KITTENS — BHM Merkel, 124 W. Summit. Ph. 475-8787. x16

FOR SALE — Used refrigerator. Ph. 428-5421, Manchester. x16

FOR RENT — 5-room downstairs, unfurnished apartment. No pets, no children. Reply Box OC-4, care of The Chelsea Standard. x17

HEY KIDS — FREE — Rolly, polly, fluffy, lovey, parrot, parrot, collie, part poodle, but all puppy. Get your pick of the litter. Ph. 475-8857. x16

FOR SALE — 6-wk.-old pups. Mother, Labrador Retriever. \$5. Ph. (517) 596-2580, 9262 Harr Rd., Waterloo. x17

K. of G. annual Euchre Tournament beginning Thursday, Oct. 7, 7:30 p.m. sharp. K. of C. Hall, Dexter. Season tickets, \$10; nightly tickets, \$1.25 purchased at the door. Prizes, refreshments. Public invited. x16

FOR SALE — Philco 17" UHF-VHF black and white television. Good condition, \$20. Phone 475-8326. x16

FOR SALE — LeMans '65 2-dr. hardtop. Power brakes and steering. Tires like new, \$395. Call 475-2729. x16

YARD SALE — 3 families moving, must sell. Furniture, antiques, dishes, kitchen utensils, clothing, misc., Oct. 14, 15 and 16, 9 a.m. to 6 p.m., 2055 Jackson Ave., Ann Arbor. x17

HUNTINGTON & FRANKLIN are ready to relocate. 2 male tortoise shell kittens well used to dogs and children. Proven mousers. Tommy Donkin. Phone 475-7261. x17

IDEAL FAMILY PET — 2 puppies looking for homes. Labrador Retriever type, 7 weeks old, wormed and trained. Katie Donkin. Phone 475-7261. x17

THANK YOU We would like to thank all our new Chelsea neighbors for all their kindness and consideration during our bereavement. (Mr. and Mrs. Gerald Quackenbush

CARD OF THANKS We wish to thank our friends, neighbors, and relatives for the beautiful cards and gifts that we received for our 55th wedding anniversary, and a thanks to all of those who in any way made the occasion a very happy one for us. (Mr. and Mrs. Clarence Lehmann.

## Generation Gap U.S.A.



## TODAY'S THOUGHT

By LOUIS BURGHARDT

"Experience is the best teacher." No question about it. But we should question what is meant by experience. The cliché — "We learn from our mistakes," can be wrong more often than right. True, we should and can learn from mistakes, but it is better, most of the time, to learn from the things we do right. In a sense, if we keep on doing things right, our mistakes will be few. One thing is certain. Worrying about our boo boos today, is surely no boon for tomorrow's success. Here is an excellent illustration —

The former head of General Motors, Alfred P. Sloan, wrote an interesting book, "My Years With General Motors." The book reveals details of one of "Boss" Kettering's greatest failures. Charles F. Kettering was the head of G. M.'s research laboratories; a genius. He tried to develop a successful air-cooled motor. It was a flop. He had other failures too. Did these failures impede his or G.M.'s progress? Of course not. The reason was because Kettering learned far more from his successes than from his failures. We all can. BURGHARDT FUNERAL HOME, 214 East Middle St., Chelsea, Mich. Phone GR 5-4141.

Need an apartment? Use a Standard Want Ad!

## SPECIALS

SWIFT'S BLADE CUT  
Beef Roast . . . . . lb. 59c  
HEATH  
Ice Cream Bars . . . . . 10c  
ECKRICH ALL MEAT  
Hot Dogs . . . . . lb. 63c  
NO. 303 CAN DEL MONTE CREAM OR WHOLE KERNEL  
Corn . . . . . 2 for 35c  
MICHIGAN  
Potatoes . . . 10-lb. bag 43c

## KUSTERER'S FOOD MARKET

DIAL 475-2721 WE DELIVER



ANY TRIP YOU MAKE will be more pleasant, if the car you drive is financed the Bank Way — economically, conveniently and with local people!

## CHELSEA STATE BANK

Member Federal Reserve System FDIC Member Federal Deposit Insurance Corp.

Chelsea  
Rod & Gun Club  
TRAP SHOOT  
7193 Lingane Rd.  
Open  
Every Sunday  
10 a.m. to 2 p.m.  
Until hunting season opens.  
Various prizes up to \$10 value for top scorers. x17

FOR SALE — Chevy camping van. Good for hunting. Sleeps 6. Ph. 475-7673. x16

PLEASE GIVE ENOUGH to count. x18

## HOUSE FOR SALE

5-year-old remodeled home at 315 Garfield, Chelsea. 3 bedrooms, study upstairs. New kitchen with built-ins. Formal dining room; fireplace in living room-den; new carpeting, drapes downstairs; 1 1/2 baths. By owner. Call 475-7305. x20

APPLE BUTTER FESTIVAL, Oct. 9. Sponsored by Unadilla Presbyterians, in Unadilla. x16

FOR SALE — German Shepherds, 2 males, 3 months old, 2 females, 10 months old. Ph. 475-7836. x17

FOR SALE — Year-around home at Pleasant Lake, 12 miles north of Jackson, 5 rooms and bath, large breezeway and storage room. Large lot with lots of trees and shrubs. Ken Byerly, 107 Water St., Stockbridge. Phone 851-7552. x1511

Up to \$50 Cash  
For Your Vacuum

Trade for Rainbow, Hoover, Kirby, Electrolux. Also home cleaning system for dust removal. Limited time only. Rainbow of Ann Arbor, Box 272 Dexter. Ph. 426-4082. x16

## MARY WOLTER REALTY

\$733 PER ACRE  
60 acres total  
30 of it woods  
30 of peat (about 6 ft. deep).

Now planted to sod. You can collect rent of \$3,000 in spring or harvest yourself. 2 trailers, 4-inch well, nice looking house goes with them.

426-8188  
Mary Wolter Realty

ANTIQUERS! Share our Indian Summer outdoor-indoor authentic antique show at Sharon Mills Antiques, 5701 Sharon Hollow Rd., Manchester, Sunday, Oct. 10. "Vittles" and a barrel of cider n' donuts! No admission or parking fee. P.S. This is a former grist mill restored by Henry Ford with its own water-operated generator. (313) 428-8200. (Some dealer space available.) x16

FOR SALE — 27 White Rock heavy hens, \$1 each. Take all. 8825 Waterloo-Munith Rd. Phone 475-4082. x16

WILL DO BABY-SITTING in my home. Phone 475-7368. x16

## Real Estate For Sale

NEW LISTING — Large 3-bedroom country home. Formal dining room plus dinette, den with fireplace, 3 baths, 2 1/2-car garage, central air-conditioning. Located on 1 1/2 acres. Close to town. \$60,000.

BRAND NEW — 3-bedroom brick, picture window, overlooks golf course, 2 carport, 2 fireplaces, large (unfinished) rec. room, 2-car attached garage. \$48,500. Financing available.

7 1/2 ACRES — All inside village limits. Has 3-bedroom house, garage, 745 feet of railroad frontage. \$30,000. Terms.

## CLARENCE WOOD BROKER

Efficient PERSONAL Service  
646 Planders St.  
Phone 475-2033 or 475-8217. x1611

APPLES — Pick your own. Apple Hill Orchard. Fresh cider and donuts. Open daily 9 a.m. to 6 p.m. 4260 Willis Rd., 1/2 mile east of Ypsilanti Hospital off US-23. Phone 434-2828. x1311

## SALE

MODEL HOME FURNISHINGS

SAVE 1/3

Weber Construction Model  
Rainbow Drive off Hankard Rd.  
Half Moon Lake  
Saturday, Oct. 9 - Sunday, Oct. 10, 1-5 p.m.

## MERKEL Home Furnishings

LOST — Boy's Chelsea jacket, South school area. Doug on lining. Ph. 475-7377. x16

FOR SALE — Women's dresses, 4 size 15-16, 2 size 14. Call 475-7253. x17

FOR SALE — 1971 Yamaha 350 road bike, \$600. Like new. Phone 475-2434. x16

## THORNTON 475-8629

6 ACRES — 3-bedroom farm style home, just east of Chelsea. Barn and 2-car garage. Complete privacy.

RANCH — Close to town, nice yard, 3 bedrooms, large living room. Owner anxious to sell.

LAKEFRONT — Cavanaugh Lake; completely renovated 2-bedroom home, electric heat, fully carpeted, wooded lot.

BRICK RANCH — 3-bedroom, family room, dining room, fireplace. Close to elementary schools. Country living in the village.

BUILDING SITES:  
3 ACRES — Dexter Schools.  
LAKEFRONT — Cavanaugh Lake.  
LAKEFRONT — South Lake.  
10 ACRES — Trinkle Rd.  
3 ACRES — Fletcher Rd.  
10 ACRES — Sager Rd.

MULTIPLE LISTING  
John C. Pierson  
ASSOCIATE

or  
Robert H. Thornton Jr.  
REALTOR

105 N. Main, Chelsea  
475-8629 eve. 475-2064, 475-8857 x16

## CHIEF ENGINEER

Midwest Area

Opportunity with major manufacturer for engineer with at least 5 years experience in spring engineering, sales engineering and customer service. Excellent benefits, salary open. Send full information to

James F. Haynes  
Guy Arthur  
and Associates, Inc.  
P. O. Box 904  
Toccoa, Georgia 30577 x17

FOR SALE — 1966 2-dr. Chevy Impala, 283 automatic, excellent condition. Must sell. Call 475-2875 after 4 p.m. x16

RUMMAGE SALE — North Lake United Methodist church, Friday and Saturday, Oct. 15 and 16, 10 a.m. to 4 p.m. x17

## REAL ESTATE

COUNTRY HOME, 2 1/2 acres, nestled in acres of state recreation land. Quad-level, 5 bedrooms, 2-car garage, fireplace, family room, recreation room; nice barn for horses; 600-ft. road frontage. Call us to show this lovely home. SF9142.

MOBILE HOME SITE, 75 ft. on road, 400-ft. deep. Septic; electricity in ready for hook-up. \$4,500 land contract available. MHS9033.

1964 NEW MOON home, 3 bedrooms, new oil furnace, electric water heater on 1/2 acre of land. MHS9015.

24 x 43 ft. new double wide Travelog 3-bedroom at Unadilla Mobile Estates.

Howell Town  
& Country, Inc.  
Local Representative  
CARLIE WIEDMAN  
Phone 878-3177 x17

FOR RENT — Modern lake-front cottage at Sugar Loaf Lake, furnished; also garage space No pets. (To June 1). \$125 per month. Ph. 1-565-3089. x16

YARD SALE — Oct. 9, and 10. 10137 Boyce Rd., west of M-52. Antiques, toys, shoes, coats, books, etc. x16

WILL DO BABY-SITTING in my own country home on Cavanaugh Lake Rd., by elderly lady. Any age. Phone 475-8033 anytime. x23

**Your Contribution to CHELSEA COMMUNITY CHEST**

**Supports 47 State and Local Service Organizations**

**HOW MUCH ARE YOU GIVING FOR EACH ONE?**

**Give Generously**

**Oct. 10th thru Oct. 23rd.**

**CHELSEA JAYCEES CHICKEN BARBECUE SUNDAY, OCT. 10**

Corner of M-52 and Old US-12, Chelsea  
Serving Starts at 11 a.m.

**2,500 Dinners Will Be Served**

**PUBLIC INVITED**

**\$1.75 per serving**

— Sponsored By —

**CHELSEA JAYCEES**

BOB UPDEGRAFF, Chairman



## Community Calendar



Sylvan Community Farm Bureau, Oct. 14, 8 p.m. Place will be announced next week. Hosts will be Mr. and Mrs. Anon Nielsen and Mr. and Mrs. Duane Rowe.

VFW Auxiliary regular business meeting, Monday, Oct. 11, 8 p.m. in the Rebekah hall.

Cub Scout Pack 445 committee, Monday, Oct. 11, 8 p.m. at the home of Andy Force.

Cub Scout Pack 445 folding Jaycee chicken barbecue boxes, 9 a.m. Saturday, Oct. 9, on lot next to Friday, Oct. 8 at 8:30 p.m. at the Meabons.

Rogers Corners Farm Bureau home of Mr. and Mrs. Armin Kuhl.

Cavanaugh Lake and North Sylvan Grange with Mr. and Mrs. Chester Notten, 14902 Reiman Rd., Oct. 12 at 8 p.m. Bring own dishes.

Chelsea Scholarship Committee, 7:30 p.m. Monday, Oct. 11 in the home economics center at the high school.

Rummage Sale, North Lake United Methodist church, Friday and Saturday, Oct. 15 and 16, 10 a.m. to 4 p.m.

Thursday, Oct. 7, Limaneers at the home of Mabel Lounsbury, 12:30 p.m.

Past Matrons pot-luck luncheon, 12:30 p.m., Oct. 7. Important to attend.

Toy Party, by House of Lloyd, Oct. 7, 7:30 p.m. at North Lake United Methodist church. Do your Christmas shopping now.

American Legion and Auxiliary hospital equipment available by contacting Loren Keezer at 475-2766 or 475-3431.

Never-Rest Farmers Farm Bureau group, 8 p.m., Oct. 15 at the home of Mr. and Mrs. Earl Heller.

**CHELSEA FINANCE CORP.**  
\$25 to \$1,000  
For Any Worthwhile Purpose

See or Call  
**FRANK HILL**  
at 475-8631

111 PARK STREET  
CHELSEA, MICH.

**EYE EXAMINATIONS . . . . . NO PRESCRIPTIONS FILLED . . . . . YES**  
With Bausch & Lomb corrected curve lenses, quality frames.

**WINANS OPTICAL**

PHONE 475-1233

114 N. Main (in Sylvan Hotel) Chelsea, Mich.

**DAVID WINANS, Optician**

(30 Years with Johnston Optical Co.)

APPOINTMENTS NOT NECESSARY

## Bulldogs Add Saline to List Of Victims

(Continued from page one)

The Saline offense didn't really start moving until the fourth quarter when a series of passes by quarterback Bill Farrell moved the Hornets to the Chelsea 11 with less than five minutes left in the game.

It took Saline four more plays to pick up another first down, and by the time Farrell went over for their only TD of the night, it was too late for anything but a loss.

According to Coach Phil Bareis, the Bulldog's solid defense was the deciding factor in the game. The two new defensive players fullback Joe Aspiranti and Ralph Stewart, both played outstanding games, Bareis said. Aspiranti had 12 tackles and an interception to his credit, and Stewart had 11 tackles and batted down three passes.

Also leading defensively were Randy Seitz, Mary Cashdollar, Tom McKernan, Randy Brier and Bob Wojcik.

Tim Lancaster was the spearhead of the Chelsea offense with 124 yards in 14 carries.

Friday night's game against Lincoln will be a crucial game for the Bulldogs. Lincoln also has been undefeated in three contests, and is known to have an extremely strong backfield sparked by two-year-all-conference choice Bruce Acuff.

And the Railsplitters will have the advantage of home ground, and an excited group of fans packing the stands to witness the Lincoln homecoming game.

Chelsea will, however, be trying to avenge their 15 to 7 defeat at the hands of the Railsplitters last year, as well as keep their perfect record intact.

## CHS Band To Be Featured At EMU Game

The Chelsea High School marching band will be the only band to be featured in a post-game performance at the Eastern Michigan Band Day this Saturday, Oct. 9.

The Chelsea band will join with approximately 12 other Michigan high school bands for pre-game and half-time musical activities, but will be alone on the field following the game.

The half-time performance of the combined bands will honor composer Igor Stravinsky and jazz great Louis Armstrong. The bands will play the finale from The Firebird ballet, one of Stravinsky's best known works, and "Glory Saints," a special arrangement of "When the Saints Go Marching In."

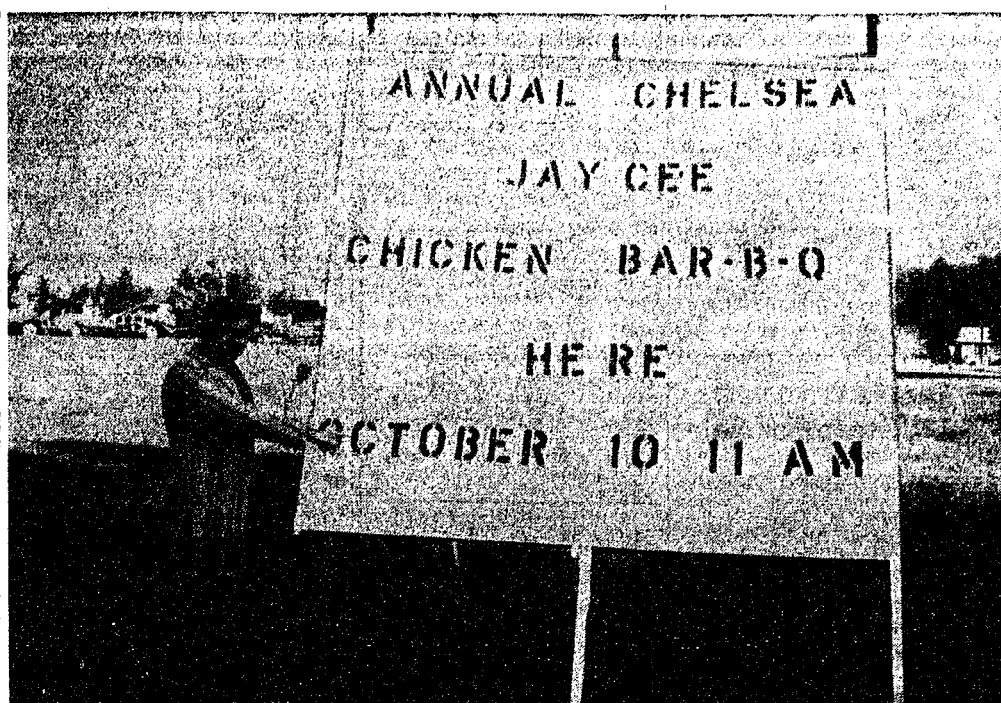
Immediately following the game, the Chelsea Band will take the field for their feature performance entitled "The World of Rock."

The show, filled with musical puns, will begin with a folk-rock number played in a downfield formation. They will then move to a concert formation for the "Pasacaglia Rock," a demonstration of "how the rock generation handles Handel." In performing the rock rendition of George Frederick Handel's 18th Century composition the band "will go for baroque," band director Warren Mayer said.

"California Soul" will be augmented with a little "sole" action by the band, as they dance to Joni Mitchell's "Chelsea Morning."

The band will form a thermometer holding fast at zero as they musically explore "the day President Nixon 'rocked' the nation," by announcing the wage-price freeze. The thermometer will soar as the band breaks into "Happy Days Are Here Again," signifying the end of the freeze in November.

According to Mayer, the 180-



"THIS IS IT," Jaycee chicken barbecue chairman Bob Updegraff seems to say, as he points to the sign at the corner of Old US-12 and M-52, the site of the event. The Jaycees expect 2,500 people will come to dinner Sunday, Oct. 10, the date of their 16th annual barbecue. Maps and routes for the Jaycees color tours will be available at the barbecue.

## Methodist Home Plans Open House

The 24th annual open house at the Chelsea Methodist Home, sponsored by the Retirement Homes Friends, will be held this Sunday, Oct. 10, from 2 to 4 p.m.

Focal point of the afternoon's festivities will be the tea served in the dining room by the Retirement Homes Friends.

In addition to the tea, guests will be invited to visit throughout the home, the spacious grounds and the Chelsea Village Apartment Complex.

Among the special points of interest will be the new Catherine B. Crippen Memorial Building at the Village Apartments. The airy building, with glass on four sides, features a big fireplace, and pantry and crafts rooms.

In the Home proper, an historical display will highlight the interesting facts and documents of the beginning of the home. The display will also include the present scene, and the Home's future expectations.

An antique display, featuring some furnished rooms of yesterday, complete with appropriately dressed hostesses, will be held in conjunction with the historical display.

There will also be a display of handicrafts made by residents of the Home.

Augmenting the festivities at the Home will be the Franklin Community Band, conducted by Dr. Conrad Lam, playing in the inner courtyard of the home.

During the afternoon, a table will be set up to receive membership and renewals for the Retirement Homes Friends organization.

In addition to this Sunday's open house, there will be another open house Oct. 23, designed primarily for area residents. At that time, there will be another tea, and handicrafts made by residents will be on sale.

member band has had several extra rehearsals to prepare for Saturday's performance, which will be an expanded version of their half-time show during the Saline game.

Last Friday's half-time show, featuring performances by both the Chelsea and Saline bands, was made possible by the athletic department's extending the half-time period, Mayer said. Cider and donuts were provided for members of both bands by the Chelsea Band Booster's committee headed by Ed Lauhon and Frank Sweeney.

Certain women's nylon scarves have been tested and found dangerously flammable by the Federal Trade Commission, say extension specialists at Michigan State University. The scarves are 24 inches square and have a criss-cross pattern of thin gold metallic stripes. They are imported and have a cloth label reading "100 percent Nylon, RN 31328, Made in Japan."

## DEATHS

**Mrs. Michael Sweet**  
Dies Monday at Hospital Following Extended Illness

Young Jin (Jean) Sweet, 148 Dewey St., died at the Chelsea Community Hospital, Monday, Oct. 4, after a long illness.

She was born Nov. 23, 1936 in Ichon-Myin, Ichon-Kun, Kangwon-Do, North Korea. She was the daughter of Yoon Bae Lee and Sun Hi Kim.

She married Michael D. Sweet, and he survives.

She came to the United States Sept. 1, 1962 and became a citizen of the United States in November, 1969.

She operated the Village Beauty Salon from Oct. 1963 until February, 1969. She was a member of the Chelsea United Methodist church, the Wesleyan Service Guild, the Ann Arbor Korean Society and the State Association of Cosmetologists.

She is also survived by one son, Philip, and one daughter, Margaret.

Funeral services will be held today, Thursday, Oct. 7 at 2 p.m. at the Chelsea United Methodist church with the Rev. Clive H. Dickens and the Rev. Lee officiating.

Burial will follow in Oak Grove Cemetery.

Memorial contributions may be made to the Jean Sweet Fund. Arrangements were by Staffan Funeral Home.

**August W. Tirb**  
Chelsea Woman's Brother Dies at Convalescent Home

August W. Tirb, 79, of 12601 Clinton Rd., died Saturday, Oct. 2, in the Whitmore Lake Convalescent Center following a lingering illness.

He was born March 9, 1892, in Sharon township, Washtenaw county, the son of Bernard and Caroline (Klinge) Tirb. He was married to Hannah Schettler, Nov. 25, 1915 and she survives. Mr. Tirb was engaged in farming his entire lifetime.

Survivors in addition to his widow include two brothers, Theodore Tirb of Dexter and Louis Tirb of Ann Arbor; four sisters, Miss Elizabeth Tirb of Chelsea, Mrs. Martha Schill of Manchester, Mrs. Ida Finkbeiner of Ann Arbor and Mrs. Elmer (Olga) Schaible of Stockbridge. He was preceded in death by one sister.

Funeral services were held at 1:30 p.m. Tuesday, Oct. 5, from the Proctor Funeral Home with the Rev. Earl Lawrence officiating. Burial followed in Mt. Hope Cemetery.

**Mrs. Karl Gloz**  
Former Ann Arbor Resident Dies at Methodist Home

Mrs. Elizabeth T. Gloz died at the Chelsea Methodist Home Saturday, Oct. 2.

She was born in Germany Sept. 2, 1889, the daughter of George and Katherine Heuring Goetz.

She married Karl Gloz July 13, 1917. He died in June, 1952.

Mrs. Gloz has been a resident of the Home since June, 1969. She lived previously at 1304 Stadium Blvd., Ann Arbor.

She is survived by one sister, Mrs. Glen (Theresa) Smock of Ann Arbor; and several nieces and nephews.

Funeral services were held Monday, Oct. 4, at the Chelsea Methodist Home, the Rev. Richard L. Clemans officiating. Burial followed in Bethlehem Cemetery, Ann Arbor.

Funeral arrangements were by Staffan Funeral Home.

**Byron H. Fortman**  
Former Area Farmer Dies at Convalescent Home

Byron H. Fortman, 2724 Branbywine Dr., Ann Arbor, formerly of Dexter, died Oct. 3, at the Whitall Convalescent Home in Ann Arbor.

He was born May 25, 1887 in White Oak township, Ingham county, the son of Charles and Samantha Holt Fortman.

He was a farmer all of his early years, and was later employed by Hoover Ball Bearing Co., of Ann Arbor.

He married Jennie Winslow April 24, 1913 at Chelsea. She died April 4, 1967.

He is survived by one daughter, Mrs. Wayne (Lois) Fairfield of Ann Arbor; and two grandsons, also of Ann Arbor.

Funeral services were held Wednesday, Oct. 6, at 10 a.m. at the Staffan Funeral Home with the Rev. S. D. Kinde officiating. Burial followed in Oak Grove Cemetery.

**Two Minor Grass Fires Along Railroad Tracks Are Reported Sunday**

Chelsea firemen were called to two grass fires—the only fires of the week—on Sunday, Oct. 3.

Both fires, one occurring at 2:34 a.m. and the other at 4:05 p.m., were started by passing trains, and both occurred along Chelsea-Dexter Rd.

According to Fire Chief Jim Gaken, each fire was extinguished in approximately 20 minutes.

## Information Meeting Slated On YFU Exchange Program

An information meeting about the Youth for Understanding teenage exchange program will be held Thursday, Oct. 14, at 8 p.m. in the Chelsea Methodist church, 128 Park St.

This is the first meeting in the Chelsea area to explain opportunities open to Chelsea area teenagers for spending next summer abroad. There will also be a discussion of the opportunities for families to host a foreign exchange student for a year or for six months.

The meeting, which is open to the public, will be conducted by Mrs. Ellen Brubaker, YFU southeast Michigan area representative. Mrs. Barbara Parker, Dexter YFU committee chairman, and Mrs. Mary Pratt, community consultant for YFU. Several international students now living in Dexter will also attend.

## Fair Board Postpones Annual Meet Date

The annual meeting of the Chelsea Community Fair Board, originally scheduled for Tuesday, Oct. 5, has been postponed until Tuesday, Dec. 7.

The meeting was postponed due to difficulties arising in the re-writing of the Fair Board by-laws. A meeting to distribute copies of the new by-laws will be held at the Fair Service Center Tuesday, Oct. 26.

## Pinckney Man Dies in 2-Car Crash Friday

William Outwater, 51, of Pinckney, was killed, and his wife and following a two-car crash one mile east of Stockbridge Friday night.

According to Ingham county Sheriff's deputies, Outwater was driving west on M-106 when his car was struck by a trailer pulled by another car traveling west on the two-lane road.

Norma Outwater, and her mother, Mrs. Mary Session of Fowlerville, were hospitalized with head injuries.

William Nott, 24, of Stockbridge, driver of the other car, was treated for minor injuries and

**Treat your home**  
TO THE WARM FRAGRANCE OF BY-GONE DAYS WITH  
**Gedarline**  
CEDAR CLOSET PANELS



**Gedarline**  
The true old-fashioned fragrance of cedar in this new, easy-to-install panel form.

**NEW 4' x 8' x 1/4" Panels**

SPECIALLY PRICED

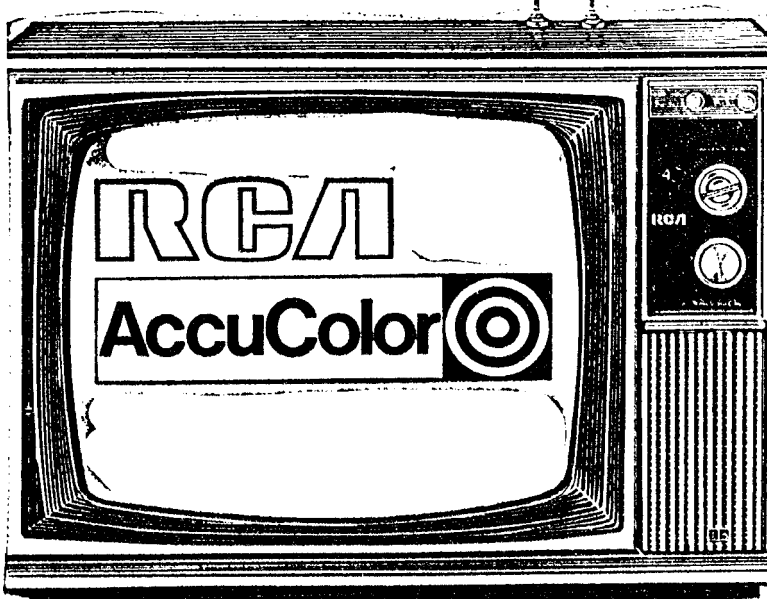
Now Thru Sat., Oct. 16th

**\$6.47** REG. \$7.95  
SAVE \$1.42

CASH - N - CARRY

**CHELSEA LUMBER**

**GAMBLES**



**RCA AccuColor**  
performance in table-top TV

Here is vivid, lifelike color—RCA's AccuColor—designed into a compact table model. Computer-designed AccuColor picture tube for sharper, more detailed pictures. Powerful chassis features many solid state components for extra dependability. AccuColor automatic tuning unclutters color because it's a system where critical color controls are automatic. EQ 465

**\$399.95**  
REG. \$479.95

## THE WONDERFUL WORLD OF "DOUBLE KNIT"

**SLACKS**

Reg. or Flares  
Solids and Fancies

**\$18.00** up

**TOPCOATS**

Navy or Brown

**\$60.00** up

**SPORT COATS**

Solid Blazers.  
Fancy Patterns.

**\$55.00** up

**SUITS**

New Models.

**\$85.00** up

**EYES EXAMINED**  
and  
**GLASSES FITTED**

For Appointment

Call GR 5-5431

**A. A. PALMER, M.D.**

110 E. Middle St.  
Chelsea, Mich.

**STRIETER'S Men's Wear**

"The Place To Go for Brands You Know"



# THE SUPERMARKET THAT'S JUST A LITTLE BIT BETTER

# Stop & Shop

14901 Old U.S.-12  
Corner at M-52  
Chelsea



*Farm Fresh! Pan-Ready! Young! Plump! Tender!*

U.S.D.A. GRADE "A"

## FRYING CHICKENS

Whole

# 29<sup>c</sup> lb.

U.S.D.A. Grade "A" **Frying Chickens** . . . Cut Up **39<sup>c</sup> lb.**

U.S.D.A. Grade "A" Fresh Frying **Chicken Breasts** . . . Backs Attached **49<sup>c</sup> lb.**

U.S.D.A. Grade "A" Fresh Frying **Chicken Legs** . . . Backs Attached **49<sup>c</sup> lb.**

U.S.D.A. Choice, Flavorful Beef **Cube Steaks** . . . **\$1.29 lb.**

U.S.D.A. CHOICE CUT SHORT

## BEEF RIB STEAKS

Tender! Juicy! Delicious! **99<sup>c</sup> lb.**

U.S.D.A. CHOICE BONELESS

## DELMONICO STEAKS

**\$1.99 lb.**

Cut from Grain-Fed Beef! U.S. Gov't Insp. Top Quality

Peschke's or Royal Crown

**Whole Ham** . . . . . Semi-Boneless **65<sup>c</sup> lb.**

Hygrade's West Virginia Thick-Sliced **Bacon** . . . . . 1 1/2-Lb. Pkg. **99<sup>c</sup>**

Gordon's Mild or Hot **Roll Sausage** . . . . . 1-Lb. Roll **49<sup>c</sup>**

Eckrich - Asstd. **Thin-Sliced Meats** . . . . . 3-Oz. Pkg. **39<sup>c</sup>**

SHAMROCK

## MED. EGGS

**35<sup>c</sup> doz.**

CARNIVAL

## ICE CREAM SANDWICHES

**2** 6 Sandwich Pkgs. **75<sup>c</sup>**

CRISPY FLAKE

## POTATO CHIPS

13-Oz. Pkg. **49<sup>c</sup>**

ASSORTED FLAVORS

## FAYGO POP

12-Oz. Can **7<sup>c</sup>**

**Courteous, Friendly Service**

**For Your Shopping Convenience . . .**

**STORE HOURS:**  
**Monday thru Saturday**  
**9 a.m. to 9 p.m.**  
**Sunday, 10 a.m. to 5 p.m.**

**Plenty of FREE PARKING**

McDONALD HOMOGENIZED

# MILK

Plastic Jug Gal. **89<sup>c</sup>**

APPIAN WAY

## PIZZA MIX

Special Label 12 1/2-Oz. Box **22<sup>c</sup>**

GERBER'S STRAINED

## BABY FOODS

4 1/2-Oz. Jar **11<sup>c</sup>**

## ICE COLD BEER & WINE

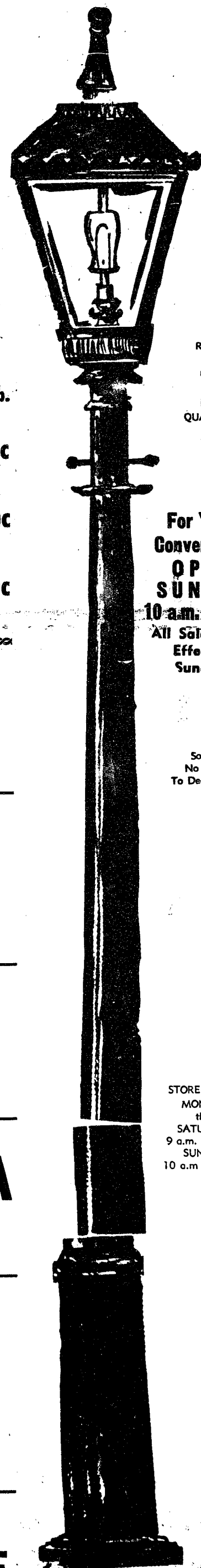
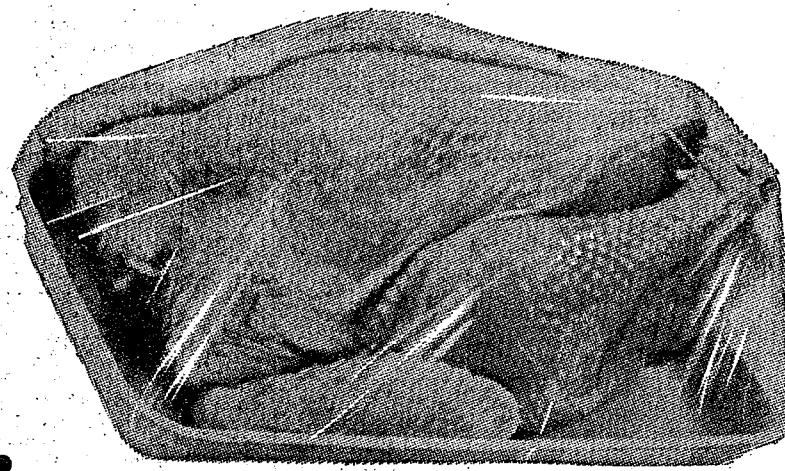
### Farm Fresh Produce

U. S. No. 1 **MICHIGAN POTATOES** . . . 20-Lb. Bag **77<sup>c</sup>**  
U. S. No. 1 Michigan **McINTOSH APPLES** . . . . . 3-Lb. Bag **39<sup>c</sup>**  
Western **BARTLETT PEARS** . . . . . 1b. **22<sup>c</sup>**  
Pepper or Butternut **HOME-GROWN SQUASH** . 2 for **29<sup>c</sup>**  
U. S. No. 1 Michigan **YELLOW ONIONS** . . . . . 3-Lb. Bag **35<sup>c</sup>**

## THE KNOW HOW OF INTELLIGENT MEAT BUYING IS REALLY 'KNOW WHERE'

Our customers have learned to depend on the outstanding quality of Stop & Shop meats — unfailing satisfaction with every cut they purchase. The finest quality, together with the experienced expertise of our meat cutting experts, makes an unbeatable combination!

Prices Effective Thursday, October 7, 1971,  
through Sunday, October 10, 1971.



WE  
RESERVE  
THE  
RIGHT  
TO  
LIMIT  
QUANTITIES

**For Your Convenience**  
**OPEN SUNDAY**  
**10 a.m. - 5 p.m.**  
**All Sale Prices Effective Sundays**

Sorry,  
No Sales  
To Dealer

HILLS BROS.

## COFFEE

3-Lb. Vac-Can **\$1.88**

STOP & SHOP ENRICHED

## BREAD

1 1/4-Lb. Loaf **6 for \$1**

MARDI-GRAS

## PAPER TOWELS

Jumbo Rolls **29<sup>c</sup>**

CHICKEN OF THE SEA

## Light Chunk TUNA

9 1/4-Oz. Can **58<sup>c</sup>**

PILLSBURY

## FLOUR

10-Lb. Bag **77<sup>c</sup>**

**Shop in a pleasantly cool AIR-CONDITIONED STORE**

**STORE HOURS:**  
**MONDAY thru SATURDAY**  
**9 a.m. to 9 p.m.**  
**SUNDAY**  
**10 a.m. to 5 p.m.**









# BOWLING NEWS



## Tri-City Mixed League

Standings as of Oct. 1

|                       | W  | L  |
|-----------------------|----|----|
| or Mobil              | 14 | 6  |
| ry Mixes              | 14 | 6  |
| ry Buick/Olds         | 13 | 7  |
| il Blazers            | 12 | 8  |
| elsea Cleaners        | 10 | 10 |
| y Market              | 10 | 10 |
| Sales & Service       | 9  | 11 |
| olverine Tall & Small | 9  | 11 |
| th's Service          | 9  | 11 |
| W's                   | 8  | 12 |
| ver's                 | 6  | 14 |
| ylauf's Appliances    | 6  | 14 |

## Leisure Time League

Standings as of Oct. 5

|            | W | L  |
|------------|---|----|
| The Nags   | 8 | 4  |
| Team 2     | 8 | 4  |
| Alley Cats | 7 | 5  |
| Team 6     | 6 | 6  |
| Rug Rats   | 5 | 7  |
| The Mums   | 2 | 10 |

Over 140 games: L. Kropf, 152; V. Wheaton, 148.  
500 series: V. Wheaton, 401.

## Old Timers League

Standings as of Oct. 2

|                     | W      | L      |
|---------------------|--------|--------|
| Sportsman's Bar     | 12     | 4      |
| Hatzel Service      | 12     | 4      |
| Hartman Ins.        | 11 1/2 | 4 1/2  |
| Colonial Lanes      | 11     | 5      |
| Bob & Otto Standard | 9 1/2  | 6 1/2  |
| Nelson Realtors     | 8      | 8      |
| Sanford Security    | 8      | 8      |
| Stein & Goetz       | 7 1/2  | 8 1/2  |
| Cloverleaf Lanes    | 7      | 9      |
| Team No. 14         | 6 1/2  | 9 1/2  |
| Merkel Furniture    | 6 1/2  | 9 1/2  |
| Mather Co.          | 5 1/2  | 10 1/2 |
| Dexter Bowl 'n' Bar | 5      | 11     |
| Team No. 16         | 5      | 11     |
| Lucky 13            | 4 1/2  | 11 1/2 |

High team game and series: Bob & Otto Standard, 862, 2,487.  
High ind. game: L. Hall, 210.  
High ind. series: E. Armbruster, 205, 556.  
Other 200 games, 500 series and over: G. Lawrence, 202, 546; D. Morton, 202; E. Elliott, 200; W. Tyrakowski, 538; R. Carpenter, 524; G. Rohde, 523; R. McCleery, 521; B. Elliott, 513; C. Bissell, 510; P. Schlaff, 509; W. Wysocki, 505.

## Guys and Gals Mixed League

Standings as of Sept. 30

|                      | W  | L  |
|----------------------|----|----|
| Chelsea Lanes        | 10 | 2  |
| Pleasant Lake Resort | 9  | 3  |
| Seitz's Tavern       | 9  | 3  |
| Team 2               | 9  | 3  |
| Chelsea Standard     | 6  | 6  |
| Pub No. 1            | 6  | 6  |
| Team No. 1           | 6  | 6  |
| The Odd Couples      | 5  | 7  |
| Norris Electric      | 5  | 7  |
| Lawwood              | 4  | 8  |
| Hay Haulers          | 3  | 9  |
| Grass Lake           | 2  | 10 |

Team high game: Pub No. 2, 2,343.  
Team high series: Pub No. 2, 847.  
Women's high game: D. Sannes, 201.  
Women's high series: D. Sannes, 499.  
Women's 150 or over games: J. Norris, 155; D. Sannes, 201, 481; N. Collins, 182; P. Elliott, 155, 152, 155; S. Zink, 151; S. Moore, 193; E. Koenigster, 158; C. Timmerman, 200; J. Schmude, 153.  
Women's 450 or over series: P. Elliott, 492; D. Sannes, 499; N. Collins, 478.  
Men's high game: J. Elliott, 215.  
Men's high series: J. Elliott, 576.  
Men's 175 or over games: T. Steele, 181; J. Norris, 178; J. Collins, 189, 214; R. Huston, 192; J. Elliott, 192, 215.  
Men's 500 or over series: J. Elliott, 576; J. Collins, 542.

## Junior Swingers

Standings as of Oct. 2

|                   | W  | L  |
|-------------------|----|----|
| The Rods          | 10 | 6  |
| The B.C.'s        | 10 | 6  |
| The B.B.A.        | 9  | 7  |
| The "74" Swingers | 9  | 7  |
| The Pin Pushers   | 8  | 8  |
| The Strikers      | 7  | 9  |
| The Champions     | 7  | 9  |
| Saturday Strikers | 5  | 11 |

Games over 130: T. Greenleaf, 15; S. Lyerla, 132, 131; D. Messner, 136, 170, 198; D. Alber, 168, 172, 154; D. Beaumont, 134; B. Kittenhelm, 131, 151, 171; S. Bowen, 135, 143; J. Collins, 143; M. Sprniet, 168, 130, 136; R. Verwey, 133; S. Schulze, 144, 132; L. Hafner, 153; B. McGuire, 135, 132; V. Burnett, 149.  
Series over 390: D. Messner, 104; D. Alber, 494; B. Kittenhelm, 453; S. Bowen, 391; M. Burnett, 429; L. Hafner, 391.

## Chelsea Women's Bowling Club

Standings as of Sept. 29

|                     | W  | L  |
|---------------------|----|----|
| Parish's Cleaners   | 14 | 2  |
| Chelsea Milling     | 12 | 4  |
| Jiffy Market        | 11 | 5  |
| Wolverine Bar       | 11 | 5  |
| Washtenaw Engr. Co. | 10 | 6  |
| Comm. Service Press | 7  | 9  |
| Jiffy Mixes         | 7  | 9  |
| Chelsea Lanes       | 6  | 10 |
| Schumm's            | 6  | 10 |
| Schneider's Grocery | 6  | 10 |
| Norris Electric     | 4  | 12 |
| No. Amer. Rockwell  | 2  | 14 |

450 series or over: R. Hummel, 321; P. Shoemaker, 514; B. Parish, 500; M. E. Sutter, 500; P. Poertner, 495; A. Boham, 494; A. Sindlinger, 484; L. Alexander, 482; B. Larson, 474; R. Lutovsky, 471; P. Fitzsimmons, 466; M. Kozminski, 464; A. Knickerbocker, 463; D. Pouty, 457; J. Montgomery, 450.  
150 games or over: R. Hummel, 190, 180, 151; P. Shoemaker, 161, 187, 166; B. Parish, 168, 176, 156; M. E. Sutter, 158, 201; P. Poertner, 156, 179, 160; A. Boham, 186, 180; A. Sindlinger, 176, 171; L. Alexander, 185; B. Larson, 161, 181; R. Lutovsky, 189; R. Fitzsimmons, 157, 157, 162; M. Kozminski, 156, 172; A. Knickerbocker, 198; D. Pouty, 159, 158; J. Montgomery, 187; S. Klink, 180; L. Orlovski, 175; A. Fahrner, 151; J. Rowe, 159; D. Verwey, 150; K. Weinberg, 161; S. Riddle, 154; P. Abdon, 165; D. Alber, 170; B. Fritz, 160; A. Eisele, 162; N. Kern, 155.

## Rolling Pin League

Standings as of Oct. 5

|                  | W      | L     |
|------------------|--------|-------|
| Egg Beaters      | 14     | 6     |
| Kookie Kutters   | 12 1/2 | 7 1/2 |
| Moppper Uppers   | 11     | 9     |
| Jolly Mops       | 10 1/2 | 9 1/2 |
| Spooners         | 10     | 10    |
| Pots             | 10     | 10    |
| Kitchen's        | 10     | 10    |
| Mixers           | 10     | 10    |
| Ritcher's Kapers | 10     | 10    |
| Grinders         | 8      | 12    |
| Coffee Cups      | 8      | 12    |
| Dish Rags        | 8      | 12    |
| Brooms           | 8      | 12    |

400 and over series: C. Shepherd, 434; J. Shepherd, 537; R. Cook, 407; J. Lewis, 400; G. Blaess, 425; E. Giffen, 410; D. Butler, 414; J. Rabbitt, 439; E. Reynolds, 445; A. Schneider, 622; S. Parker, 422; P. Harok, 458; J. Priest, 461; R. Bable, 416; L. Orlovski, 469.  
140 and over games: E. Beck, 166; C. Shepherd, 154, 156; J. Pax, 142; J. Shepherd, 149, 166; 222; R. Cook, 149; D. McMullen, 140; M. Klink, 143; J. Lewis, 142; E. Giffen, 151; D. Butler, 142, 167; J. Rabbitt, 168; G. Brier, 141; E. Reynolds, 142, 171; A. Schneider, 170; P. Harok, 161, 157, 140; D. Keizer, 143; J. Priest, 156, 167; R. Bable, 149, 161; S. Cat-tell, 169; K. Brettschneider, 141, 144; P. Patterson, 150; L. Orlovski, 158, 167, 144; J. Myers, 154.  
Splits converted: J. Edick, 2, 5, 10; R. Foster, 5, 7; M. L. Cook, 3, 10; J. Shepherd, 3, 8; G. Blaess, 5, 8, 10; G. Weiner, 3, 5, 10; P. Harok, 3, 10; P. Borders, 5, 10 and 2, 5, 10; B. Slater, 5, 6; K. Brettschneider, 5, 10; R. Bable, 5, 10; J. Priest, 5, 7.

## Leisure Time League

Standings as of Oct. 5

|            | W | L  |
|------------|---|----|
| The Nags   | 8 | 4  |
| Team 2     | 8 | 4  |
| Alley Cats | 7 | 5  |
| Team 6     | 6 | 6  |
| Rug Rats   | 5 | 7  |
| The Mums   | 2 | 10 |

Over 140 games: L. Kropf, 152; V. Wheaton, 148.  
500 series: V. Wheaton, 401.

## Old Timers League

Standings as of Oct. 2

|                     | W      | L      |
|---------------------|--------|--------|
| Sportsman's Bar     | 12     | 4      |
| Hatzel Service      | 12     | 4      |
| Hartman Ins.        | 11 1/2 | 4 1/2  |
| Colonial Lanes      | 11     | 5      |
| Bob & Otto Standard | 9 1/2  | 6 1/2  |
| Nelson Realtors     | 8      | 8      |
| Sanford Security    | 8      | 8      |
| Stein & Goetz       | 7 1/2  | 8 1/2  |
| Cloverleaf Lanes    | 7      | 9      |
| Team No. 14         | 6 1/2  | 9 1/2  |
| Merkel Furniture    | 6 1/2  | 9 1/2  |
| Mather Co.          | 5 1/2  | 10 1/2 |
| Dexter Bowl 'n' Bar | 5      | 11     |
| Team No. 16         | 5      | 11     |
| Lucky 13            | 4 1/2  | 11 1/2 |

High team game and series: Bob & Otto Standard, 862, 2,487.  
High ind. game: L. Hall, 210.  
High ind. series: E. Armbruster, 205, 556.  
Other 200 games, 500 series and over: G. Lawrence, 202, 546; D. Morton, 202; E. Elliott, 200; W. Tyrakowski, 538; R. Carpenter, 524; G. Rohde, 523; R. McCleery, 521; B. Elliott, 513; C. Bissell, 510; P. Schlaff, 509; W. Wysocki, 505.

## Guys and Gals Mixed League

Standings as of Sept. 30

|                      | W  | L  |
|----------------------|----|----|
| Chelsea Lanes        | 10 | 2  |
| Pleasant Lake Resort | 9  | 3  |
| Seitz's Tavern       | 9  | 3  |
| Team 2               | 9  | 3  |
| Chelsea Standard     | 6  | 6  |
| Pub No. 1            | 6  | 6  |
| Team No. 1           | 6  | 6  |
| The Odd Couples      | 5  | 7  |
| Norris Electric      | 5  | 7  |
| Lawwood              | 4  | 8  |
| Hay Haulers          | 3  | 9  |
| Grass Lake           | 2  | 10 |

Team high game: Pub No. 2, 2,343.  
Team high series: Pub No. 2, 847.  
Women's high game: D. Sannes, 201.  
Women's high series: D. Sannes, 499.  
Women's 150 or over games: J. Norris, 155; D. Sannes, 201, 481; N. Collins, 182; P. Elliott, 155, 152, 155; S. Zink, 151; S. Moore, 193; E. Koenigster, 158; C. Timmerman, 200; J. Schmude, 153.  
Women's 450 or over series: P. Elliott, 492; D. Sannes, 499; N. Collins, 478.  
Men's high game: J. Elliott, 215.  
Men's high series: J. Elliott, 576.  
Men's 175 or over games: T. Steele, 181; J. Norris, 178; J. Collins, 189, 214; R. Huston, 192; J. Elliott, 192, 215.  
Men's 500 or over series: J. Elliott, 576; J. Collins, 542.

## Junior Swingers

Standings as of Oct. 2

|                   | W  | L  |
|-------------------|----|----|
| The Rods          | 10 | 6  |
| The B.C.'s        | 10 | 6  |
| The B.B.A.        | 9  | 7  |
| The "74" Swingers | 9  | 7  |
| The Pin Pushers   | 8  | 8  |
| The Strikers      | 7  | 9  |
| The Champions     | 7  | 9  |
| Saturday Strikers | 5  | 11 |

Games over 130: T. Greenleaf, 15; S. Lyerla, 132, 131; D. Messner, 136, 170, 198; D. Alber, 168, 172, 154; D. Beaumont, 134; B. Kittenhelm, 131, 151, 171; S. Bowen, 135, 143; J. Collins, 143; M. Sprniet, 168, 130, 136; R. Verwey, 133; S. Schulze, 144, 132; L. Hafner, 153; B. McGuire, 135, 132; V. Burnett, 149.  
Series over 390: D. Messner, 104; D. Alber, 494; B. Kittenhelm, 453; S. Bowen, 391; M. Burnett, 429; L. Hafner, 391.

## Chelsea Women's Bowling Club

Standings as of Sept. 29

|                     | W  | L  |
|---------------------|----|----|
| Parish's Cleaners   | 14 | 2  |
| Chelsea Milling     | 12 | 4  |
| Jiffy Market        | 11 | 5  |
| Wolverine Bar       | 11 | 5  |
| Washtenaw Engr. Co. | 10 | 6  |
| Comm. Service Press | 7  | 9  |
| Jiffy Mixes         | 7  | 9  |
| Chelsea Lanes       | 6  | 10 |
| Schumm's            | 6  | 10 |
| Schneider's Grocery | 6  | 10 |
| Norris Electric     | 4  | 12 |
| No. Amer. Rockwell  | 2  | 14 |

450 series or over: R. Hummel, 321; P. Shoemaker, 514; B. Parish, 500; M. E. Sutter, 500; P. Poertner, 495; A. Boham, 494; A. Sindlinger, 484; L. Alexander, 482; B. Larson, 474; R. Lutovsky, 471; P. Fitzsimmons, 466; M. Kozminski, 464; A. Knickerbocker, 463; D. Pouty, 457; J. Montgomery, 450.  
150 games or over: R. Hummel, 190, 180, 151; P. Shoemaker, 161, 187, 166; B. Parish, 168, 176, 156; M. E. Sutter, 158, 201; P. Poertner, 156, 179, 160; A. Boham, 186, 180; A. Sindlinger, 176, 171; L. Alexander, 185; B. Larson, 161, 181; R. Lutovsky, 189; R. Fitzsimmons, 157, 157, 162; M. Kozminski, 156, 172; A. Knickerbocker, 198; D. Pouty, 159, 158; J. Montgomery, 187; S. Klink, 180; L. Orlovski, 175; A. Fahrner, 151; J. Rowe, 159; D. Verwey, 150; K. Weinberg, 161; S. Riddle, 154; P. Abdon, 165; D. Alber, 170; B. Fritz, 160; A. Eisele, 162; N. Kern, 155.

## Rolling Pin League

Standings as of Oct. 5

|                  | W      | L     |
|------------------|--------|-------|
| Egg Beaters      | 14     | 6     |
| Kookie Kutters   | 12 1/2 | 7 1/2 |
| Moppper Uppers   | 11     | 9     |
| Jolly Mops       | 10 1/2 | 9 1/2 |
| Spooners         | 10     | 10    |
| Pots             | 10     | 10    |
| Kitchen's        | 10     | 10    |
| Mixers           | 10     | 10    |
| Ritcher's Kapers | 10     | 10    |
| Grinders         | 8      | 12    |
| Coffee Cups      | 8      | 12    |
| Dish Rags        | 8      | 12    |
| Brooms           | 8      | 12    |

400 and over series: C. Shepherd, 434; J. Shepherd, 537; R. Cook, 407; J. Lewis, 400; G. Blaess, 425; E. Giffen, 410; D. Butler, 414; J. Rabbitt, 439; E. Reynolds, 445; A. Schneider, 622; S. Parker, 422; P. Harok, 458; J. Priest, 461; R. Bable, 416; L. Orlovski, 469.  
140 and over games: E. Beck, 166; C. Shepherd, 154, 156; J. Pax, 142; J. Shepherd, 149, 166; 222; R. Cook, 149; D. McMullen, 140; M. Klink, 143; J. Lewis, 142; E. Giffen, 151; D. Butler, 142, 167; J. Rabbitt, 168; G. Brier, 141; E. Reynolds, 142, 171; A. Schneider, 170; P. Harok, 161, 157, 140; D. Keizer, 143; J. Priest, 156, 167; R. Bable, 149, 161; S. Cat-tell, 169; K. Brettschneider, 141, 144; P. Patterson, 150; L. Orlovski, 158, 167, 144; J. Myers, 154.  
Splits converted: J. Edick, 2, 5, 10; R. Foster, 5, 7; M. L. Cook, 3, 10; J. Shepherd, 3, 8; G. Blaess, 5, 8, 10; G. Weiner, 3, 5, 10; P. Harok, 3, 10; P. Borders, 5, 10 and 2, 5, 10; B. Slater, 5, 6; K. Brettschneider, 5, 10; R. Bable, 5, 10; J. Priest, 5, 7.

## Leisure Time League

Standings as of Oct. 5

|            | W | L  |
|------------|---|----|
| The Nags   | 8 | 4  |
| Team 2     | 8 | 4  |
| Alley Cats | 7 | 5  |
| Team 6     | 6 | 6  |
| Rug Rats   | 5 | 7  |
| The Mums   | 2 | 10 |

Over 140 games: L. Kropf, 152; V. Wheaton, 148.  
500 series: V. Wheaton, 401.

## Old Timers League

Standings as of Oct. 2

|                     | W      | L      |
|---------------------|--------|--------|
| Sportsman's Bar     | 12     | 4      |
| Hatzel Service      | 12     | 4      |
| Hartman Ins.        | 11 1/2 | 4 1/2  |
| Colonial Lanes      | 11     | 5      |
| Bob & Otto Standard | 9 1/2  | 6 1/2  |
| Nelson Realtors     | 8      | 8      |
| Sanford Security    | 8      | 8      |
| Stein & Goetz       | 7 1/2  | 8 1/2  |
| Cloverleaf Lanes    | 7      | 9      |
| Team No. 14         | 6 1/2  | 9 1/2  |
| Merkel Furniture    | 6 1/2  | 9 1/2  |
| Mather Co.          | 5 1/2  | 10 1/2 |
| Dexter Bowl 'n' Bar | 5      | 11     |
| Team No. 16         | 5      | 11     |
| Lucky 13            | 4 1/2  | 11 1/2 |

High team game and series: Bob & Otto Standard, 862, 2,487.  
High ind. game: L. Hall, 210.  
High ind. series: E. Armbruster, 205, 556.  
Other 200 games, 500 series and over: G. Lawrence, 202, 546; D. Morton, 202; E. Elliott, 200; W. Tyrakowski, 538; R. Carpenter, 524; G. Rohde, 523; R. McCleery, 521; B. Elliott, 513; C. Bissell, 510; P. Schlaff, 509; W. Wysocki, 505.

## Guys and Gals Mixed League

Standings as of Sept. 30

|                      | W  | L  |
|----------------------|----|----|
| Chelsea Lanes        | 10 | 2  |
| Pleasant Lake Resort | 9  | 3  |
| Seitz's Tavern       | 9  | 3  |
| Team 2               | 9  | 3  |
| Chelsea Standard     | 6  | 6  |
| Pub No. 1            | 6  | 6  |
| Team No. 1           | 6  | 6  |
| The Odd Couples      | 5  | 7  |
| Norris Electric      | 5  | 7  |
| Lawwood              | 4  | 8  |
| Hay Haulers          | 3  | 9  |
| Grass Lake           | 2  | 10 |

Team high game: Pub No. 2, 2,343.  
Team high series: Pub No. 2, 847.  
Women's high game: D. Sannes, 201.  
Women's high series: D. Sannes, 499.  
Women's 150 or over games: J. Norris, 155; D. Sannes, 201, 481; N. Collins, 182; P. Elliott, 155, 152, 155; S. Zink, 151; S. Moore, 193; E. Koenigster, 158; C. Timmerman, 200; J. Schmude, 153.  
Women's 450 or over series: P. Elliott, 492; D. Sannes, 499; N. Collins, 478.  
Men's high game: J. Elliott, 215.  
Men's high series: J. Elliott, 576.  
Men's 175 or over games: T. Steele, 181; J. Norris, 178; J. Collins, 189, 214; R. Huston, 192; J. Elliott, 192, 215.  
Men's 500 or over series: J. Elliott, 576; J. Collins, 542.

## Junior Swingers

Standings as of Oct. 2

|                                |       |
|--------------------------------|-------|
| Pin Fighters                   | 9     |
| Flip Flop Pop Tops             | 9     |
| Mustangs                       | 5     |
| Pro's                          | 4 1/2 |
| Bullpups                       | 3     |
| Fantastic 5                    | 2 1/2 |
| Strikers                       | 2     |
| Eagles                         | 2     |
| Games over 100: C. Collins     |       |
| S. Fahrner, 101; D. Packard    |       |
| 106; J. Sweet, 116; 186; J. J. |       |
| 125, 125; B. Lewis, 112, 14    |       |
| Bowen, 148; K. Mshar, 11       |       |
| Sannes, 125, 137; D. Green     |       |
| 141; J. Miller, 124; B. Bo     |       |
| 141; B. McGibney, 137, 12      |       |
| Houle, 110; C. J. Boyer, 123   |       |
| M. Foster, 136; D. Alexander   |       |
| P. Greenleaf, 167, 130; D. T   |       |
| son, 129, 113; J. Fench, 14    |       |
| Kalishke, 130.                 |       |



# Church Women Plan Clothing Drive To Aid Needy Families

Chelsea's Church Women United are holding a fall clothing drive for "The House by the Side of the Road," Tuesday, Oct. 19. "The House," located at the Washtenaw County Social Service Center, is a non-profit organization sustained by the volunteers of county church women. It distributes free clothing and household articles to families in the county.

According to Mrs. Raymond Crabtree, manager of "The House," the greatest need now is for fall winter clothes for infants and children, especially warm winter coats and shoes.

Mrs. Crabtree and Mrs. Jack Kel, head of the local clothing drive, both stress the fact that "The House" will accept only clothing which is in fairly good condition. "We need clean,

good, useable clothing," Mrs. Crabtree said. "We are not in the rag business."

Those who wish to aid the clothing drive, but do not have used clothing which they can pass on, are urged to make a monetary contribution to "The House."

Many of the items in greatest demand — underwear, stockings, bluejeans, pajamas, diapers, shoes, and other things kids wear out — are in short supply at the House, Mrs. Crabtree explains.

Cash contributions are used almost exclusively to buy those items of children's clothing, Mrs. Crabtree added.

Mrs. Merkel added that the house is also able to use bedding, curtains, linen, small household appliances, and baby furniture. The house will accept furniture for infants — cribs, playpens, etc. — because of the great demand for it, but will not take regular household furniture since the storage space is extremely limited.

Church Women United will collect clothing for "The House" at the Congregational church on Oct. 19 between 9 and 11 a.m. Those not able to drop clothing off at that time may call Mrs. Merkel, 475-2739 to make other arrangements.

## Destruction of Property, Thefts Reported to Police

Two thefts and a malicious destruction of private property complaint kept Chelsea police on the move Friday.

A tape deck and tachometer were stolen from a 1971 Chevrolet pickup truck owned by Marlis Williams, 1500 Sylvan Rd., during the Chelsea-Saline football game Friday night.

Williams told police that he had left the locked truck on the grassy area west of the football field while he attended the game. When he returned he found a vent window had been forced, and the tachometer and tape deck stolen.

The loss was estimated at approximately \$80. Chelsea police are investigating.

Vandals threw a stone through a plate glass window in the dining room of the Chelsea Medical Center's extended care facility at approximately 8 p.m. Friday night.

Patrolman L. F. Schneider said that the Chelsea police are working on a suspect.

Sometime between midnight Thursday and 8 a.m. Friday, a 1969 50 cc. Suzuki motorcycle belonging to Russell Leonard Abdon, 505 Wilkinson, was stolen from the yard in front of Abdon's house.

The theft of the light blue and chrome bike is the second motorcycle theft in the Wilkinson St. area in three weeks.

The best time to paint your home is during the relatively dry time of day. Morning dew should have evaporated. The temperature should be above 40 degrees. Start on the coolest, shadiest side of the house and paint around your home, staying in the shade.

As a Grand Opening Special, the Crossland Process is the most modern method known for stripping paint and varnish from furniture. It is approved by antique dealers; interior decorators and professional furniture refinishers; it doesn't raise the grain, loosen glued joints or harm the finish.

Hurry! Take advantage of the Crossland Grand Opening Special NOW! Learn why the Crossland Process is known as "The Furniture Restoration Service With The Finishing Touch." From Ann Arbor, take US-23 to Dundee Exit, then East on Rt. 50 to Lewis Ave., then North to Custer, From Monroeville go Northwest on Custer. Adv.

## + Services in Our Churches +

**ST. PAUL UNITED CHURCH OF CHRIST**  
The Rev. Warner Siebert, Pastor  
Saturday, Oct. 9—  
9:00 a.m.—Junior High confirmation program.  
Sunday, Oct. 10—  
10:30 a.m.—Worship. Laity Sunday, speaker, Jim Stirling.  
Tuesday, Oct. 12—  
7:30 p.m.—Church Council.  
Wednesday, Oct. 13—  
7:00 p.m.—Spiritual Life.  
7:15 p.m.—High School Choir.  
8:15 p.m.—Chancel Choir.

**ST. MARY CATHOLIC CHURCH**  
The Rev. F. Francis Wahowiak  
Every Saturday—  
7:30 p.m.—Mass.  
Every Sunday—  
Masses at 6:30 a.m., 8:00 a.m., 10:00 a.m., and 11:30 a.m.

**ST. THOMAS EVANGELICAL LUTHERAN**  
The Rev. Daniel L. Mattson, Pastor  
Every Sunday—  
9:30 a.m.—Sunday school.  
10:30 a.m.—Worship service.

**VILLAGE UNITED METHODIST CHURCH OF WATERLOO**  
8118 Washington St.  
Mrs. Altha Barnes, pastor  
Every Sunday—  
10:00 a.m.—Sunday school.  
11:15 a.m.—Morning worship.  
First and Third Saturdays—  
7:00 p.m.—Youth Fellowship at Village Church Sunday school house.

**ST. JOHN'S EVANGELICAL AND REFORMED CHURCH**  
(United Church of Christ)  
Francisco  
The Rev. Robert Townley  
Every Sunday—  
10:00 a.m.—Worship service.  
10:20 a.m.—Sunday school.

**FIRST UNITED METHODIST CHURCH OF WATERLOO**  
Parks and Territorial Rds.  
Mrs. Altha Barnes, Pastor  
Every Sunday—  
9:15 a.m.—Morning worship.  
10:30 a.m.—Sunday school.  
First and Third Saturdays—  
7:00 p.m.—Youth Fellowship at Village church Sunday school house.

**IMMANUEL BIBLE CHURCH**  
145 E. Summit St.  
Gayle DeSmither, Lay Leader  
Every Sunday—  
9:45 a.m.—Sunday school, nursery provided.  
11:00 a.m.—Morning worship, nursery provided.  
7:00 p.m.—Evening service.  
Every Wednesday—  
7:00 p.m.—Prayer meeting and Bible study.

**ST. JOHN'S EVANGELICAL AND REFORMED CHURCH**  
(United Church of Christ)  
Rogers Corners  
The Rev. David J. Kleis  
Every Sunday—  
9:30 a.m.—Sunday school.  
10:30 a.m.—Morning worship.

**NORTH SHARON COMMUNITY BIBLE CHURCH**  
Sylvan and Washburn Rds.  
The Rev. William Enslin, Pastor  
Every Sunday—  
10:00 a.m.—Sunday school.  
11:00 a.m.—Worship service.  
6:30 p.m.—Young People's service.  
Every Wednesday—  
7:30 p.m.—Prayer meeting.

**BETHEL EVANGELICAL AND REFORMED CHURCH**  
(United Church of Christ)  
Freedom Township  
The Rev. Roman A. Reineck  
Every Sunday—  
10:00 a.m.—Worship.  
10:00 a.m.—Sunday school.

**ZION LUTHERAN CHURCH**  
Corner of Fletcher, Waters Rds.  
(Rogers Corners)  
The Rev. John R. Morris, Pastor  
Saturday, Oct. 9—  
Youth Instruction Classes.  
9:00 a.m.—9th grade.  
10:00 a.m.—10th grade.  
11:00 a.m.—7th grade.  
Sunday, Oct. 10—  
Festival of Harvest Home.  
9:00 a.m.—Sunday school.  
10:15 a.m.—Worship.  
2:00 p.m.—Brotherhood trapshoot.  
Tuesday, Oct. 12—  
7:30 p.m.—Women's shuffleboard.  
Wednesday, Oct. 13—  
8:00 p.m.—Church Council.  
Thursday, Oct. 14—  
9:00 a.m.—Church and Parish Hall cleaning day.

**CONGREGATIONAL CHURCH**  
(United Church of Christ)  
The Rev. Daniel Kellin, Pastor  
Every Sunday—  
9:00 a.m.—Senior High Sunday school.  
9:45 a.m.—Sunday school.  
10:00 a.m.—Morning worship.

**CHELSEA BAPTIST CHURCH**  
337 Wilkinson  
The Rev. James Stacey, Pastor  
Every Sunday—  
10:00 a.m.—Sunday school.  
11:00 a.m.—Worship service.  
Nursery care available during all services.  
6:00 p.m.—Junior and Senior Baptist Youth Fellowship.  
7:00 p.m.—Evening worship.  
Every Wednesday—  
7:30 p.m.—Bible study and prayer meeting.

**ST. BARNABAS EPISCOPAL CHURCH**  
20500 Old US-12  
The Rev. C. Walton Fitch, Vicar  
Telephone 426-8815  
Every Sunday—  
9:15 a.m.—Holy Communion, first, third, and fifth Sundays.  
9:15 a.m.—Morning Prayer, second and fourth Sundays.

**ST. JACOB EVANGELICAL LUTHERAN CHURCH**  
12501 Riethmiller Rd., Grass Lake  
The Rev. Andrew Bloom, Pastor  
Every Sunday—  
9:00 a.m.—Sunday school.  
10:15 a.m.—Divine services.

**OUR SAVIOR LUTHERAN CHURCH**  
Rebekah Hall, 1194 M-52  
The Rev. William H. Keller, Pastor  
Every Sunday—  
9:00 a.m.—Sunday school.  
10:30 a.m.—Worship service.  
Every Tuesday—  
3:30-5 p.m.—Confirmation I.  
Every Thursday—  
4:00-5:30 p.m.—Confirmation II.  
Every Saturday—  
9:00 a.m.-11:00 a.m.—Confirmation III.

**FIRST CHURCH OF CHRIST, SCIENTIST**  
1883 Washtenaw Ave., Ann Arbor  
Sunday, Oct. 10—  
10:30 a.m.—Sunday school.  
10:30 a.m.—Morning service.  
Lesson-sermon: "Are Sin, Disease and Death Real?"

**NORTH LAKE UNITED METHODIST CHURCH**  
The Rev. Harry Weeks, Pastor  
Every Sunday—  
9:30 a.m.—Worship service.  
10:30 a.m.—Sunday school.

**SALEM GROVE UNITED METHODIST CHURCH**  
The Rev. Harry Weeks, Pastor  
Every Sunday—  
10:00 a.m.—Sunday school.  
11:00 a.m.—Worship service.

**FIRST UNITED METHODIST CHURCH**  
The Rev. Clive Dickens, Pastor  
Every Sunday—  
9:00 a.m.—Sunday school. Nursery through adult.  
10:00 a.m.—Worship service.

**GREGORY BAPTIST CHURCH**  
The Rev. Grant Lapham, Pastor  
Every Sunday—  
10:00 a.m.—Worship service.  
11:15 a.m.—Church school.  
6:30 p.m.—Baptist Youth Fellowship.  
7:30 p.m.—Evening worship service.

**CHURCH OF CHRIST**  
13661 Old US-12, East  
Lionel S. Burger, Minister  
Every Sunday—  
10:00 a.m.—Church school.  
11:00 a.m.—Worship service.  
6:00 p.m.—Worship service.  
Every Wednesday—  
7:30 p.m.—Bible Study.

**FIRST ASSEMBLY OF GOD CHURCH**  
The Rev. Thode B. Thodeson, Pastor  
Every Sunday—  
9:45 a.m.—Sunday school.  
11:00 a.m.—Worship service.  
7:00 p.m.—Evangelistic service.  
Every Wednesday—  
7:00 p.m.—Midweek services.

**CHELSEA MEDICAL CENTER**  
Every Wednesday—  
1:30 p.m.—Worship service.

## MSU Will Operate New UHF Channel

East Lansing — Thanks to a \$420,000 federal grant, Michigan State University plans to activate a full-time UHF educational television channel.

The operation of UHF Channel 23 by MSU's television station, WMSB, will serve more than two million persons within the 58-mile radius of its transmitting facility in Okemos.

MSU's present "shared-time" arrangement with WILX-TV, under which WMSB broadcasts 38 hours per week on VHF Channel 10, will be dissolved.

## MSU Grads Fare Well In Tight Job Market

Despite the tightest job market in years, only 11 percent of Michigan State's spring graduates have been unable as yet to find employment.

Jack Shingleton, director of MSU's Placement Bureau, said, "We feel that this compares very favorably with other universities where as many as half of their students still have been unable to find work."

Shingleton said that his interview schedules at present do not indicate that there will be a change in demand by employers for the coming year.

## Patrolman McDougall Attending Course in Fingerprint Techniques

Patrolman Lenard McDougall of the Chelsea police department is now attending a five-day course in the identification and classification of fingerprints.

The basic course, offered by the Southeast Regional Criminal Justice Training Center, located at the Washtenaw County Service Center in Ann Arbor, will enable McDougall to read and classify fingerprints.

McDougall will return to the center next spring to take an advanced course in fingerprint reading and classification.

## THE BIBLE ANSWERS

**QUESTION:** Starting with Genesis 1:1 and closing with the book of Revelation, the Bible presupposes the existence of God. Are there any arguments (other than scriptural) which can be used to combat skepticism, atheism, infidelity and agnosticism.

**ANSWER:** Through the years rational and philosophical arguments have been developed in support of belief in God. They are, briefly stated, as follows:

**The Cosmological Argument.** The very existence of the world argues a beginning and an actuating cause, which cause believers affirm is God. If the universe had an origin, there must have been some causative force behind it, for there is no such thing as an uncaused beginning.

**The Teleological Argument.** Simply stated, this argument affirms that order and purpose require an intelligent cause, or that the design of anything in itself suggests a designer. The universe, wonderfully produced and precisely arranged, argues divine intelligence behind it.

**Ontological Argument.** This argument asserts the existence of God from the fact that man has a concept of Him. Since man does possess a concept of a Supreme Being, from what source is this concept derived? It is received through inspiration, and is of divine origin.

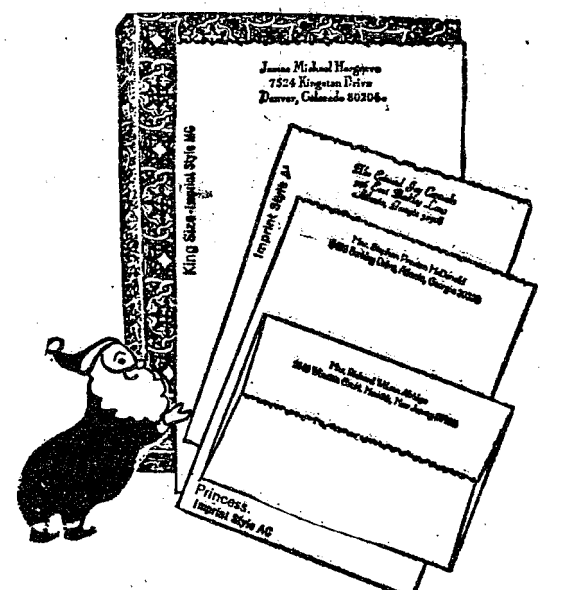
**The Moral Argument.** The fact that man possesses moral concepts of right and wrong, and the fact that these moral laws, unvarying from generation to generation, so frequently condemn man, also argues the existence of a Supreme Being.

"But without faith it is impossible to please him: for he cometh to God must believe that he is, and that he is a rewarder of them that diligently seek him." (Hebrews 11:6).

## CHURCH OF CHRIST

For questions or comments please write:  
13631 Old US-12, Chelsea, Mich. 48118

## The Chelsea Standard



## Pre-Christmas Gift Sale

Rytex Deckle Edge Vellum  
Personalized Stationery

Save 50% **\$4.95** (regularly \$9.90)

150 Princess sheets & 100 envelopes . . . or  
100 King size sheets & 100 envelopes

This way you can give a lot of goodness — it's high quality paper; a lot of style; a lot of usefulness. But most of all you give a gift that says, "I had just you in mind." Because Rytex is custom-made for the individual. Makes an ideal gift for men or women — don't forget the men on your list!

Marvelously deckled paper in white, blue, or grey. Smartly imprinted in blue or grey ink in choice of imprint styles shown. Princess or King size sheets—the choice is yours. You can't go wrong. Because any Rytex Personalized stationery style you choose is correct.

Beautifully Gift Boxed.

MAIL ORDER COUPON

**THE CHELSEA STANDARD**  
CHELSEA MICH. 48118

DECKLE EDGE VELLUM \_\_\_\_\_ boxes at sale price of \$4.95 per box.

**SPECIAL BONUS** (check) include 50 matching, unprinted, sheets for only \$1.00 more....

**CHECK** ☐ Princess White (9400) ☐ King White (9100)  
**YOUR** ☐ Princess Blue (9450) ☐ King Blue (9150)  
**CHOICE** ☐ Princess Grey (9460) ☐ King Grey (9160)

Ink: ☐ Grey Ink ☐ Blue Ink ☐ Imprint MC ☐ Imprint AL ☐ Imprint AR

Imprint Name \_\_\_\_\_  
Street \_\_\_\_\_  
City \_\_\_\_\_ State \_\_\_\_\_ Zip \_\_\_\_\_  
Ordered by: \_\_\_\_\_  
City \_\_\_\_\_ State \_\_\_\_\_ Zip \_\_\_\_\_  
Street \_\_\_\_\_

☐ Charge ☐ Payment enclosed. (Sorry, No C.O.D.'s)  
Please include Sales Tax.

**SUCCESSOR TO THE AUTOMATIC WATER SOFTENER**

**THE REYNOLDS SOFT-SENSOR**

THE WATER CONDITIONER THAT HAS A MIND OF ITS OWN FOR SOFT, RUST-FREE WATER

THAT'S RIGHT! Every night the Soft-Sensor "takes its own pulse." If it needs recharging, it recharges itself... If not, it checks itself the next night. The Soft-Sensor recharges itself ONLY when it needs it, and always when it needs it.

- All the soft water you need
- Saves salt-maintenance cost
- It "sleeps" when you're away from home
- Simple, dependable construction
- "Lifetime" all-fiberglass tanks
- Remarkably low in cost

**PURCHASE OR RENTAL PLAN**

Other brands of water softeners can often be converted to the Soft-Sensor. Call our direct factory line without charge 1-800-552-7717 or call Ann Arbor 662-5676

The Reynolds Soft-Sensor is a product of:  
**REYNOLDS WATER CONDITIONING CO.**  
12100 Cloverdale Avenue / Detroit, Michigan 48204

Serving Washtenaw County with quality water conditioning products for 40 years



## INVITATIONS or ANNOUNCEMENTS . . .

Let us provide you with the very finest printed or engraved invitations and announcements. Make certain that your wedding stationery is of top quality and conforms to correct social requirements. We can advise you on these important details.

**THE CHELSEA STANDARD**  
Commercial Printing Department



While making repairs protect your loss of normal business profit with

**Business Interruption Insurance**

See your A-Q Man

**A. D. MAYER AGENCY, INC.**

115 Park St. Chelsea  
"Your Protection Is Our Business"  
Phone 479-5061

**Auto-Owners INSURANCE COMPANY**

## Breakthrough in color photography!

**BIG 8"x10" LIVING COLOR PORTRAIT\***

A PORTRAIT SPECIAL FOR EVERYONE

AT 99¢

This very special offer is presented as an expression of our thanks for your patronage.



Compare at \$25.00!

• GENUINE FULL NATURAL COLOR PORTRAITS

Not the old style tinted or painted black & white photos.

• A SELECTION of poses.

• FOR ALL AGES! Babies, children, adults.

Group photographs at an additional small charge.

Free 8"x10" color portrait to all customers over 60 years of age.

Advised after head and shoulders only.

• LIMITED OFFER! One per subject, one per family.

**RICK'S MARKET**

20940 M-52

**TUESDAY, OCT. 12**

10 a.m. to 6 p.m.



## Gridders Down Saline For Third Win

Chelsea 18, Saline 6, as gridders used both luck and skill to gain their third win of the season last Thursday.

The game started with a bang, as Chelsea scored twice and Saline once in the first five minutes of the first quarter.

Marshall went 60 yards for a TD on the third play of the quarter. The extra point was unsuccessful, and Chelsea led 6-0. Saline then scored on a drive which led them to the Chelsea one-yard line. Time expired before Saline could start from the one, and the half ended with Chelsea still in the lead.

Pandy took Saline's kick-off 85 yards for Chelsea's second score, and the Bulldogs led 12-0.

Chelsea and Saline then battled back and forth between the 30-yard line until the end of the quarter, when Saline drove which led them to the Chelsea one-yard line. Time expired before Saline could start from the one, and the half ended with Chelsea still in the lead.

El Pickelsimer sent Chelsea's kick-off deep inside Saline's territory, and the defense trapped the runner behind his own line. Chelsea held Saline to the 20 for two plays, but took out on the third. Saline drove 45 yards to the Chelsea 10, where Dale Poertner, racing in behind, tackled the Saline carrier.

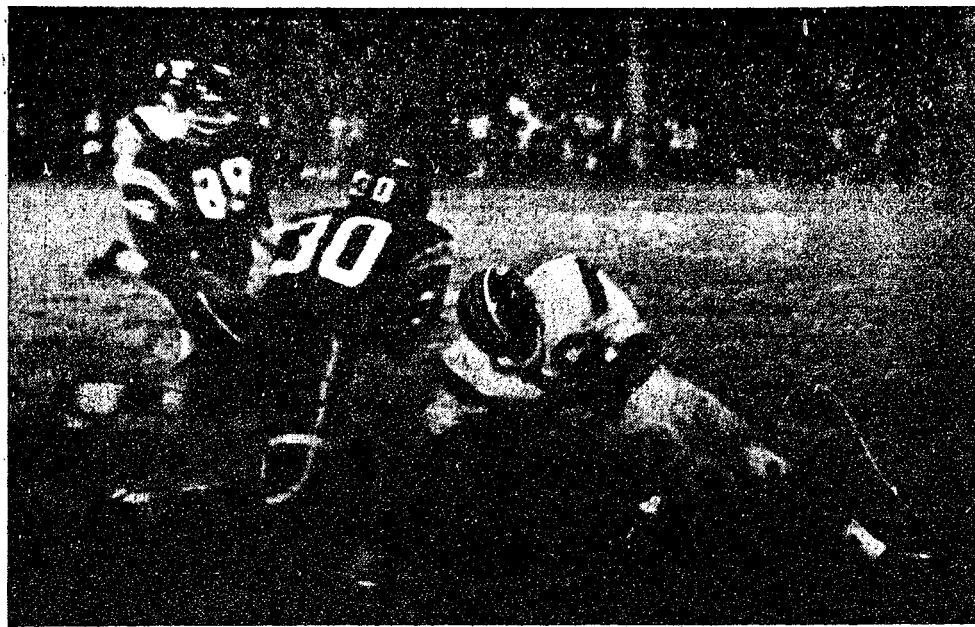
Chelsea took over on their own 20. Saline tried unsuccessfully to move in for the score. The Bulldogs moved the ball 71 yards in 10 plays, using up nine minutes of the remaining playing time. Jeff Marshall then went one yard to the middle, on the first play of the fourth quarter, to the 10. The score 18-6.

Chelsea threatened once more in the fourth quarter, moving inside to the 20-yard line, after Chelsea received two 15-yard penalties.

Chelsea was led defensively by Marshall with 14 tackles, Poertner with 9, John Houle and Howard Haselsch.

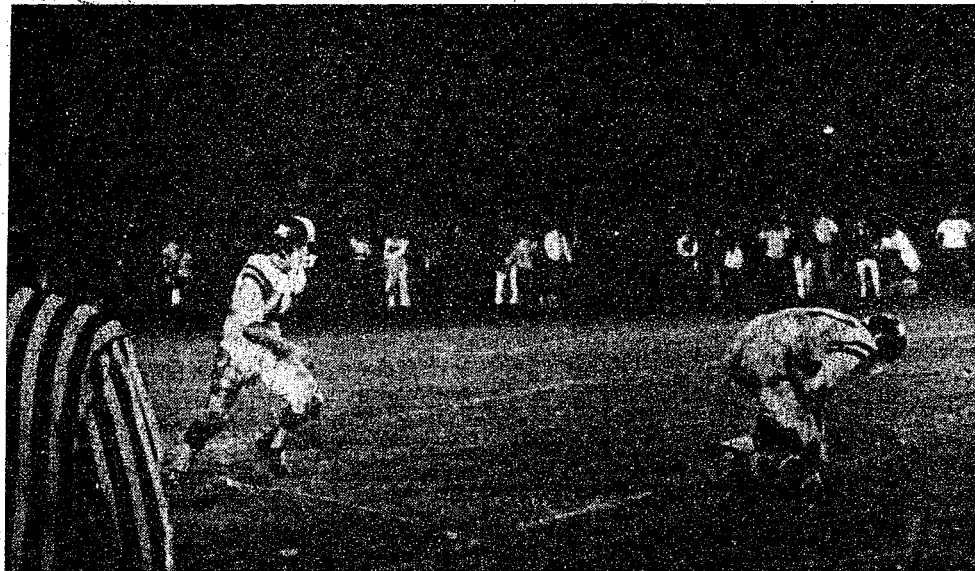
Chelsea will meet Lincoln tonight at 7 p.m. on home territory.

Subscribe today to The Standard!



**HEADING HOME:** Chelsea's Tim Lancaster (30) left Saline quarterback Bill Farrell (16) empty handed at the 30, as he cut clear of the last Saline man between him and the Saline goal line.

Lancaster's third period, 37-yard touchdown run gave the Bulldogs a 14-0 lead. Lancaster led the Chelsea offense last Friday, gaining 124 yards in 14 carries.



**TOO BAD!** Saline's Dennis Martin (27) was caught by the camera as he fumbled a Chelsea punt on his own 26-yard line late in the third quarter. Moments later, the Chelsea defense hid

Martin from sight, but not before he'd recovered the ball. The fumble hurt, as Saline was unable to take advantage of another lost opportunity.

### RENT-A-COURT?

Rather than vault the tennis net after a match, a winning player can wait until the net falls down. Combining the traditional game and the parking meter has created

the collapsible tennis net. Dropping money into a slot on the net post raises the net for play. Sixty minutes later, the net goes limp. The idea is to prevent players from exceeding their rented hour.

The morning after the first frost is always a sad time for gardeners. But, cheer up - all is not lost! It's easy to start a bright indoor garden with professionally grown container plants.

## Frosh Grid Team Downs Saline, 14-6

Chelsea's freshmen gridders traveled to Saline last Wednesday and came home with a 14-6 victory over the Hornets, their second win of the season.

Chelsea got things going early in the game when Greg McClain forced a Saline blocker into his own team's punt. The Bulldogs recovered the loose ball on the Saline 32-yard line, and then moved to the Saline four. Karl Gauss dove over for the touchdown, and Paul Wood took a pass from Todd Orbring for the extra two points.

Following the Chelsea TD, Saline dominated the rest of the first half. They scored once in the second quarter, but failed to make a two-point conversion attempt good, and Chelsea led, 8-6, at the half.

Chelsea was tougher both offensively and defensively in the second half. The offense started slowly, but with three minutes left in the third quarter they moved in again for their second score. Perry Johnson, Ron Collins, Karl Gauss, Don Pierson and Randy Musbach carried on dives and sneaks through the middle of the Saline defense.

A fourth down pass from Johnson to Wood kept the drive alive, and Collins then dashed 14 yards for the final TD.

Chelsea's sustained drive moved the ball 89 yards in 20 plays, and consumed more than nine minutes of playing time.

Saline had their last chance when they got the ball with two minutes left in the game. Their threat ended when Johnson intercepted a Hornet pass at his own 18-yard line, and the Bulldogs ran out the clock to save their second win.

Coach Bill Bainton was pleased with the win, and with the team's revival in the second half. He had special praise for the blocking of Don Bollinger, John Coley and Mike Grambau.

"Fundamentally," Bainton said, "they looked stronger than we did, but we showed some tough football in the second half."

The freshmen played Lincoln Wednesday, and will play Vandercreek Lake Thursday, Oct. 14 at 7 p.m.

Compiling specialized lists of names enabled 200 list companies to gross \$2 billion last year.



## ★ Farmers Lead in Fight on Pollution

One of the aggravating problems of the pollution issue is developing effective tools to stop it. But for rural communities and for farmers it's going to be a lot easier. Part of the answer is coming from the creation of the Rural Environmental Assistance Program (REAP).

The heart of the program is REAP will pay about 50 percent of the cost of programs that will achieve permanent environmental benefits. Projects that provide only temporary benefits will be financed only under certain circumstances and at a reduced level of federal cost. Goals that benefit all citizens will be the most favored by REAP.

The cost sharing will give impetus to programs on the farm. It will result in public benefits for soil and water conservation, recreation, wildlife and open space.

And farmers in the country will be running the program. They are among the best qualified folks to do so, anywhere. Farmers for years have been practicing soil and water conservation methods. They are well seasoned to face the challenges of pollution that face all citizens. Each leader will be an elected farmer committeeman.

The U.S. Department of Agriculture release said concentration will focus on not only agricultural, but industrial municipal wastes as well. It said, water re-

## Questions on Continuing Education Program Will Be Answered

Now that classes are well underway for the Continuing Education those who have questions may get answers by calling the Co-ordinator, Richard Garland, at 426-3993 during class nights from 6 to 10 p.m. or on Saturday mornings from 8 a.m. to noon.

The office will be open in the lower level of the Library one morning a week to be announced at a later date.

taining and retarding measures on farms such as dams and ponds, permanent grass cover, waterways, buffer strips, and tree plantings will be stressed. These will be directed toward reducing silt in streams, rivers, lakes and other bodies of water and toward reducing pollution from runoff from the land.

The program will be carried out by the Agricultural Stabilization and Conservation Service of the USDA. The Department's Soil Conservation Service

will give technical and educational assistance.

REAP is an outgrowth of the now defunct Agricultural Conservation Program (ACP). It recognizes that privately-owned land is a source of pollution, but that good management of this land can also be a major factor in improving living conditions for all citizens. By sharing the cost, the program will enable farmers to undertake measures that their limited resources would not otherwise permit.

# SALE

## Model Home Furnishings SAVE 1/3

From the Weber Construction Co. Model House on Rainbow Drive, off Hankerd Rd., at Half Moon Lake.

FREE DELIVERY - TERMS AVAILABLE - NO LAY-AWAY

|                       |                        |
|-----------------------|------------------------|
| Sofa                  | Rocking Chair          |
| Pair of Chairs        | Dresser & Mirror       |
| Pair of Bookcases     | Small Chest            |
| Credenza              | Night Stand            |
| Floor Lamp            | Wall Mirror            |
| Table Lamps           | Wall Shelf             |
| Dining Table & Chairs | Decorative Accessories |
| Record Cabinet        | Bedspread              |
| Headboard & Bed Frame | Pictures               |
| Mattress & Box Spring | End Tables             |

**Sat., Oct. 9 & Sun., Oct. 10**  
From 1 p.m. to 5 p.m.

# MERKEL

## HOME FURNISHINGS

ALL SALES FINAL

# THE KIWANIS CLUB OF CHELSEA PROUDLY PRESENTS A TRULY OUTSTANDING TRAVEL & ADVENTURE SERIES

6 FULL COLOR FILMS NARRATED IN PERSON  
BY THESE NATIONALLY-KNOWN ADVENTURERS:

TUESDAY, OCTOBER 26th

★ **DON COOPER**  
'Trails of the Mountain West'

SATURDAY, NOVEMBER 20th

★ **DICK REDDY**  
'Adventures in Switzerland'

SATURDAY, JANUARY 15th

★ **JAMES FORSHEE**  
'Incredible Japan'

**SEASON  
TICKETS  
\$7.00**

**TICKETS NOW  
ON SALE**  
THESE SHOWS ARE RATED  
**"G"REAT!**

Treat Yourself and Your Family  
To A Season of Fun, Beauty  
and New Knowledge thru  
Kiwanis' 11th Annual Travel &  
Adventure Series

Tickets Available at Many Local  
Stores or From a Kiwanian

SATURDAY, FEBRUARY 27th

★ **JULIAN GROMER**  
'Wheels Across America'

SATURDAY, MARCH 25th

★ **JOE ADAIR**  
'Ethiopia - Fabled Kingdom'

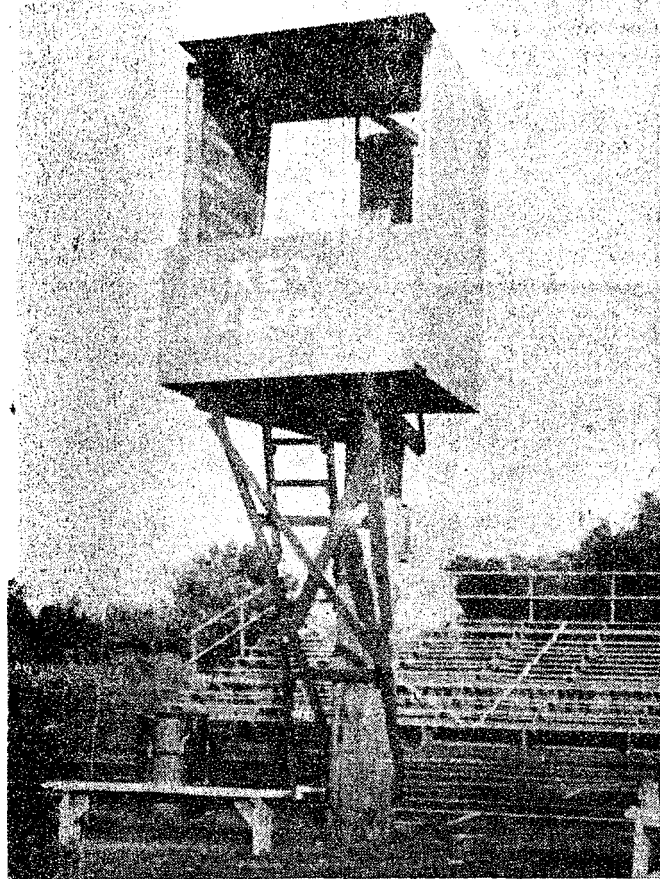
SATURDAY, APRIL 15th

★ **JAMES METCALF**  
'The Open Arms of Portugal'  
A GLIMPSE OF PARADISE

**PLACE:** Chelsea High Auditorium  
**TIME:** 8:00 P.M. Sharp  
**PROCEEDS:** To Local Area Kiwanis Projects

**Kiwanis Expects an Early Sellout  
For This EXCEPTIONAL Series  
BUY YOUR TICKETS SOON!**





**KEY PROJECT** for the Key Club was rebuilding the old crow's nest on the Chelsea High school athletic field in order to alleviate the overcrowding of the press box. According to Key Club President Ken Kusterer, Chelsea hopes to eventually move its video tape recorder to the crow's nest since it commands a better view of the field than the press box. Key club members working on the project were Kusterer, Dennis Landwehr, Norbert Weber, Houston Hardy, Greg Osborne, Chick Lane, Tim Van Slambrouk, Ron Landwehr, Mike Rossbach, Doug Van Gorter, Dan Gaunt, Bob Weir, Craig Coltre and Mike Hergert. They tore down all of the old crow's nest except the platform, and put up new sides, the half front, and roof, and finished it off with blue and gold paint.

## School Board Briefs

Present at the Oct. 4 meeting of the Chelsea Board of Education were President Storey, Koenn, Straub, Haselschwardt, Schafer, Irwin, Superintendent Cameron, Business Manager Mills, Principals Lane and Wojcicki, and Assistant Principal Lapandowski. Several guests were also present.

Motion by Irwin, supported by Haselschwardt, to adopt the minutes of the meeting of Sept. 20, as corrected. All ayes.

Motion by Straub, supported by Irwin, to suspend the normal order of business and devote 30 minutes to a discussion of the Washtenaw Mental Retardation Service Center. All ayes.

Norman Quackenbush, Charles Foster and Robert Barnes discussed the proposed facility for the mentally retarded and mentally handicapped. A Nov. 30 election will be held to vote on the bond issue for this facility.

Motion by Irwin, supported by Haselschwardt, to adopt the minutes of the meeting of Sept. 20, as corrected. All ayes.

Reports were given by the chairman of the Business, Administration and Finance Committee, the Policy Committee, Labor Relations Committee, Public Affairs Committee, and the Planning Committee.

The 1971-72 tentative budget was discussed in detail. Motion by Schafer, supported by Irwin, to adopt the tentative budget for 1971-72 of \$2,152,392. All ayes.

Motion by Koenn, supported by Straub, to hold a public hearing on the 1971-72 budget on Nov. 1 at 7 p.m. in the high school library. All ayes.

Motion by Straub, supported by Haselschwardt, to adopt the recommended changes in policy CEB Superintendent of Schools, and policy CEI Appraisal of Administrators. Motion Carried. The first change instructs the superintendent to prepare the agenda for school board meetings in accordance with Robert's Rules of Order, and in co-operation with the board president. The second policy change provides that the evaluation of the superintendent of schools, to be made by Aug. 15 of each year, will now be made by all the members of the board of education. The appraisal was formerly made only by officers of the board.

Motion by Koenn, supported by Irwin, to sign the contract of Mrs. Lois Maitland for 1971-72 upon the recommendation of the administration. All ayes.

Motion by Irwin, supported by Haselschwardt, to sign the contract of Mrs. Kathleen Dykstra for 1971-72 upon the recommendation of the administration. All ayes.

Superintendent Cameron recommended that the board of education support the Washtenaw County Mental Retardation Service Center bond issue for .19 mills, to be voted on Nov. 30.

Motion by Schafer, supported by

Straub, that the Chelsea School District Board of Education go on record as supporting the proposed Washtenaw Mental Retardation Center bond issue for .19 mills to be voted on Nov. 30. All ayes.

Motion by Straub, supported by Irwin, to go into executive session at 10:25 p.m. All ayes.

Meeting called back to order at 12:30 a.m.

Business Manager Mills reported on additional lighting to be installed on North and South Elementary schools; and reported that the Nov. 30 election on the Mental Retardation Service Center will be held in the Sylvan Township Hall.

A short discussion was held regarding the dress and grooming code. The matter was referred to the Policy Committee.

Meeting adjourned at 12:45 p.m.

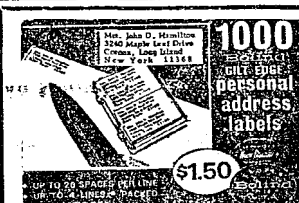
## Servicemen's Corner



PVT. FRANK D. WALKOWE

### Completes Marine Corps Recruit Training

San Diego—Marine Pvt. Frank D. Walkowe, son of Mr. and Mrs. Frank D. Walkowe of 16350 English Rd., Manchester, Mich., has graduated from recruit training at the Marine Corps Recruit Depot, San Diego.



Now Available at

The Chelsea Standard

## INCOME TAX FRANCHISE AVAILABLE

H & R Block is looking for a responsible individual capable of operating a volume tax business. Prior tax knowledge, while helpful, is not necessary. The Block franchise is compatible with most other service-oriented businesses. We furnish:

• TRAINING • SUPPLIES  
ADVERTISING  
**H & R BLOCK**  
America's Largest Tax Service

TO: **H & R BLOCK** 304 South Ashley  
Ann Arbor, Mich. PH. 761-1280

Please send me your brochure outlining the H & R Block Franchise Program. I understand there is no obligation on my part.

Name \_\_\_\_\_

Address \_\_\_\_\_

City/State/Zip Code \_\_\_\_\_

Telephone No. \_\_\_\_\_

CLIP AND MAIL TODAY

## Warm a little girl's heart this Christmas.



Your heart will be warmer too.

### Enter our Dress-A-Doll Contest

Dress-A-Doll makes you a part of warmer Christmases for little girls who desperately need cheer and love. You show you care when you enter our Dress-A-Doll Contest.

So simple. We provide the 16" doll, and you design and sew an outfit for it. There are six costume categories with six \$10 prizes and one grand prize of \$50.

Costumes will be judged and dolls displayed in our lobby in December. At Christmastime each doll becomes a gift to some needy child in the community. And you made it happen. Pick up your black or white doll at any AAFS office starting October 4. It must be returned by November 15.

Won't you warm a little girl's heart this Christmas? Yours will be warmer, too.

SINCE 1900  
**AAFS**

the savings and loan specialists

Liberty at Division, West Stadium at Pauline,  
Huron Parkway at Platt, Plymouth at Nixon.

**ANN ARBOR FEDERAL SAVINGS**

Member: Federal Home Loan Bank System • Federal Savings and Loan Insurance Corporation

# CHELSEA HARDWARE

110 South Main St.

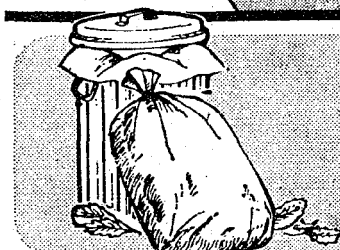
Phone GR 9-6311

**SALE ENDS  
SATURDAY, OCT. 9**



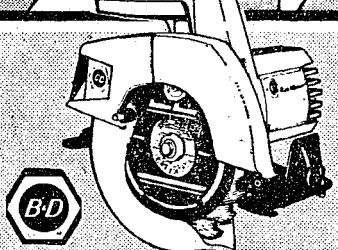
SHOP NOW AT YOUR NEAREST  
PRO HARDWARE STORE AND SAVE  
DURING NATIONAL HARDWARE  
HOUSEWARE WEEK...  
AS ADVERTISED IN LOOK.

# FALL SAVEABLE SALE



### Lawn Leaf Cleanup Bags

20 - 30 gallon size for big fall cleanups in yard and home.  
**SAVE 96¢**



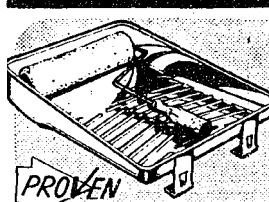
### 7 1/4" Circular Saw

Cuts up to 2-inch lumber at a 45 degree bevel, burnout-protected motor.  
**SAVES WORK**



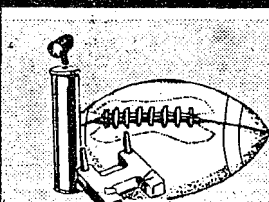
### Metal Leaf Rake

Steel tines get the leaves and debris off your lawn.  
**SAVE 63¢**



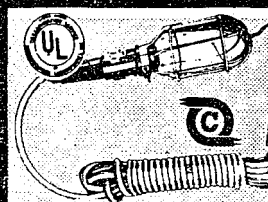
### 9-In. Pan & Roller Set

Large capacity 9" pan - 7" roller and wool cover.  
**SAVE 80¢**



### Football, Tee & Pump

A regulation-size foot-ball with kicking tee and pump.  
**SALE PRICE**



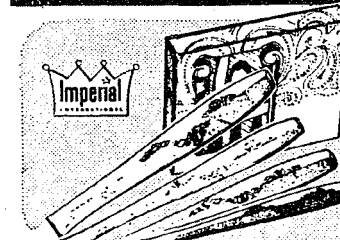
### 25' Trouble Light

Has electrical outlet built in. Heavy molded socket. Swing open guard.  
**SAVE 50%**



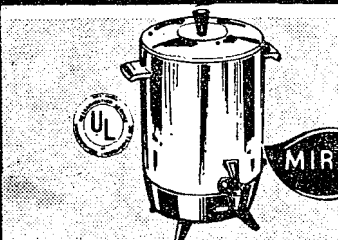
### Spray Paint

Ideal for touch up. Many decorator colors. 16 ounce.  
**SALE PRICE**



### 24-Piece Stainless Tableware

Solid stainless steel can't rust or tarnish and no plating to wear off.  
**SAVE \$2.95**



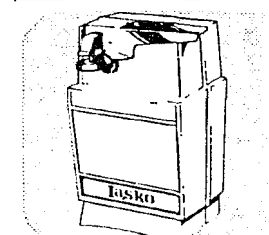
### 30-Cup Percolator

Completely automatic. Light glows when coffee is ready.  
**SAVERS SPECIAL!**



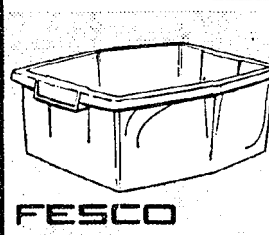
### Electric Blanket

Machine washable. Non - allergenic. Automatically adjusts to room temperature.  
**SAVE \$1.95**



### Electric Can Opener

Opens any size and shape can. Magnet holds lid.  
**SALE PRICE**



### 10-Qt. Dish Pan

Attractive and practically unbreakable.  
**SAVERS SPECIAL**



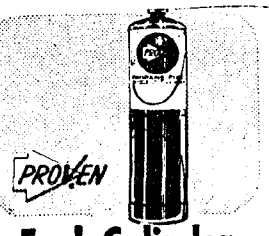
### Rug Cleaner

Spray on and wipe off for a cleaner carpet.  
**SAVE 60¢**



### Vacuum Bags

Fits most vacuums. 4-6 Pac 32¢ disposable.  
**SAVE 47¢**



### Fuel Cylinder

For torches, stoves, lanterns. Keep a spare handy.  
**SALE PRICE**



### 4-Pac Brushes

1/2", 1", 1 1/2", 2" sizes to handle most painting jobs.  
**SALE PRICE**



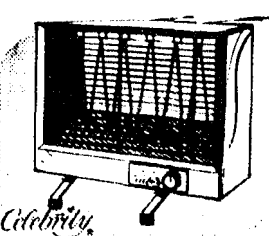
### Rubber Door Mat

Say Welcome to your guests with this attractive all weather door mat.  
**SAVE 53¢**



### Twin Pack Rollers

For most painting jobs. Two 9-inch wooly roller covers.  
**SALE PRICE**



### Electric Heater

Automatic thermostat. Safety tip-over switch.  
**SAVE \$3.07**



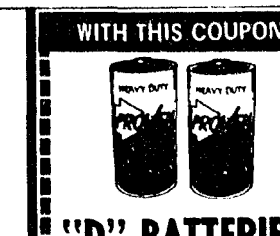
### Long Handle Shovel

Shaped for easier digging.  
**SAVE \$1.19**



### 10-Quart Pail

Has handle and pouring spout. Measure marks.  
**SAVERS SPECIAL**



### "D" BATTERIES

SAVE 9¢ With COUPON  
**2 For 20¢**



## Audrey Ellen Hayes, Allan Price Wed Friday at North Lake Church



Mrs. Allan Price

The North Lake United Methodist church was the setting Friday, Oct. 1, for the evening, candlelight ceremony uniting Miss Audrey Ellen Hayes and Allan Price. The Rev. Harry Weeks performed the double-ring ceremony before a small gathering of close friends and relatives.

Audrey is the daughter of Mr. and Mrs. Aldwyn E. Hayes, 5600 Stofor Rd. Allen is the son of Mr. and Mrs. Thomas Allan Price of Melbourne, Fla.

For her wedding, the bride chose a classic gown of ivory whipped cream with flowing chapel sleeves and a low V-neckline accented by an antique brooch. Tiny flowers and baby's breath were worn in her hair. Her bouquet combined a single white catyula orchid with fern leaves and white tubing.

The matron of honor, Mrs. Daniel Mayer, sister of the bride, wore a long gown of emerald green crepe with short sleeves and bodice insets of deep lavender. She carried a lavender fuji mum with greenery and matching ribbons.

The bridesmaid, Mrs. Larry Wittup, was similarly attired in an emerald green gown with burnt orange sleeves and bodice insets. She carried a bouquet of one burnt orange fuji mum nestled in greenery and matching ribbons.

For her daughter's wedding, Mrs. Hayes chose a long dress of pale lavender whipped cream with an empire bodice, and long sleeves accented with small covered buttons. She wore a corsage of yellow roses. Mrs. Price chose a beige suit with white accessories. Her corsage was of white roses!

Daniel Mayer, brother-in-law of the bride, served as best man. Larry Wittup was the usher. David Kniesly provided organ music background for the ceremony.

Following the ceremony, wedding guests were entertained at a dinner at the home of the bride's parents.

Upon returning from their honeymoon, the couple will reside at 2117 Lake in the Woods Apartments, Ypsilanti.

**FISHY!**  
Biologists estimate there are 25,000 species of fish.

## Girl Scouts

GROUP 169—

The first fall meeting of Brown-Group 169 was held Oct. 4, at Congregational church, with 10 members present.

Books were collected and the flag song was held.

Refreshments were furnished by Kvarnberg in honor of her birthday. We sang happy day to her, and to Kim Har-

vey sang some Brownie songs, made large name tags about as we like and enjoy.

Trip to the Dexter Cider Mill planned for Oct. 11.

We closed with the Brownie

song, and the Good Night song.

Tami Schulze, scribe.



Mrs. Thomas James Dorer

## Barbara Blecha, Thomas Dorer Speak Vows at St. Mary Church

Barbara Ann Blecha became the bride of Thomas James Dorer in an afternoon ceremony performed at St. Mary Catholic church Saturday, Oct. 2, by the Rev. Fr. Francis Wahowiak.

Barbara is the daughter of Mr. and Mrs. Lynn J. Blecha, 310 Island Lake Rd. Thomas is the son of Mr. and Mrs. Robert Dorer, 218 Cedar Lake Rd.

The bride wore an A-line, white satin gown featuring long, bell-shaped sleeves with pearl beaded trim. Her cathedral-length white lace veil was held by a white satin bow.

Matron of honor, Carolyn MacDougall, sister of the bride, wore a deep coral empire waisted gown with long flowing sleeves and scooped neckline. Her dark brown velvet choker necklace matched the dark brown velvet ribbon circling her waist. She carried a basket of mums in shades of coral, apricot, gold and beige.

Bridesmaids Linda Picklesimer, Denise Slusser and Rebecca Tibb wore similarly styled gowns in shades of apricot, gold and beige. They too, carried baskets of mums, also in shades of coral, apricot, gold and beige.

For her daughter's wedding, Mrs. Blecha chose a chocolate

brown princess style A-line dress with cream colored ruffled trim and matching brown accessories.

Mrs. Dorer wore a dark brown A-line dress with beige accessories.

Vocal music for the wedding was performed by William Hammer.

Best man was Larry Gaken. Ushers were Robert MacDougall and Donald Dorer and Gary Dorer, brothers of the bridegroom.

Following the ceremony, the bride's parents hosted a reception and buffet at the Chelsea Rod & Gun Club. Debra Paul and Betty McNutt served the wedding cake, and Karen Parsons attended the guest book.

On their return from a week-long wedding trip to Florida, the new Mr. and Mrs. Dorer will make their home at 200 Cedar Lake Rd.

The bride is a graduate of Chelsea High school and is employed by Michigan Bell Telephone Co. in Ann Arbor.

The bridegroom is a graduate of Chelsea High school and is employed by Dana Corp.

## Club and Social Activities

### LEGION AUXILIARY

The regular luncheon meeting of the American Legion Auxiliary was held at the Legion Home Oct. 6, at 8 p.m. Fourteen members were present.

The next meeting will be held Nov. 2, at Sylvan Town Hall.

The Auxiliary will hold a rummage sale Friday, Nov. 12 at Saturday, Nov. 13 at the town hall.

### ALTAR SOCIETY

The regular monthly meeting of St. Mary's Altar Society was Monday, Oct. 4 in the school hall with 23 members and two guests present.

Serving on the October Altar committee are Mrs. Armin Steger and Mrs. George Staffan.

Mrs. George Brettschneider announced that the group will have a bake sale Saturday, Oct. 9 at the Sylvan Town Hall.

After a lengthy discussion, a motion was made by Mrs. Mary Kniss, seconded by Mrs. Walter Bolanowski to omit the annual roast beef dinner this year. The motion carried. In lieu of the dinner, a special collection will be taken on Sunday, Nov. 7.

Father Francis Wahowiak announced that October rosary devotions will take place at 7 p.m. Wednesday evenings.

The members were led in closing by Father Wahowiak.

Refreshments were served by Mrs. L. D. Guinan and her committee.

Mrs. Kathleen Chapman showed slides of her trip to Oregon.

The average farmer produces seven times as much per hour today than the average farmer 50 years ago.

Subscribe today to The Standard!



Cynthia A. Rutherford

## Earns Degree at CMU

Cynthia A. Rutherford, daughter of Mr. and Mrs. Robert Rutherford, 148 Van Buren, received her Bachelor of Science in Education degree from Central Michigan University this August.

More than 600 degrees were awarded by the University at the end of the summer session. Commencement exercises are not held at CMU during the summer or fall, but August graduates are invited to participate in the mid-year commencement, to be held this year on Dec. 18.

## VILLAGE BEAUTY SALON

LORETTA - CINDY - EULA

MARGE - ARLENE - SARAH

107 N. MAIN

PHONE 475-5421

We are happy to have Sarah Steele

back on our staff.

Give her a call, she'll be glad to see you again.

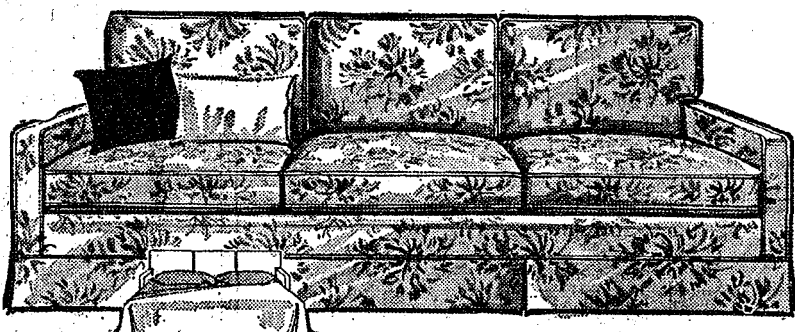
OPEN MONDAY THRU SATURDAY

Evenings By Appointment

## SLEEP SOFA SALE

10 DAYS ONLY

20% OFF



Our entire stock of Sleep Sofas from famous brand makers now on sale until Oct. 16. Choose from a variety of styles, sizes and fabrics and save 20%

\$389.00 52" LOVESEAT SIZE, gold Herculan Tweed, 2-cushion, attached pillow-back Lawson style, kick pleat skirt.

\$269.90

\$499.00 62" LOVESEAT SIZE, brown velvet upholstery, traditional button-back style, kick pleat skirt.

\$399.90

\$299.95 66" SOFA SIZE, 2-cushion contemporary style, vinyl upholstery in olive green or black.

\$239.90

\$325.00 68" SOFA SIZE, olive green durable tweed, full size bed, 2-cushion, Lawson style.

\$259.90

\$319.95 70" SOFA, black vinyl upholstery, modern tuxedo style, double bed size.

\$259.90

\$399.95 72" SOFA, gold Herculan basket weave, high, tuxedo arms, double bed size.

\$319.90

\$389.95 72" SOFA, black vinyl, 3-cushion, slope arm contemporary style, queen size mattress.

\$309.90

\$474.95 72" SOFA, multicolor floral tapestry, traditional pillow back style, queen size mattress.

\$379.90

\$469.95 80" SOFA, black and white hounds-tooth Herculan, modern pillow back with arm bolsters, queen size mattress.

\$374.90

\$479.50 81" SOFA, Herculan plaid in olive and gold tones, contemporary pillow-back style, queen size mattress.

\$379.90

\$439.50 82" SOFA, Herculan stripe in rust, brown and white stripe, transitional pillow back design, queen size mattress.

\$349.90

\$475.00 88" SOFA, gold crushed velvet, all arm tuxedo style, queen size mattress.

\$379.90

## MERKEL BROTHERS

FURNITURE & CARPETS

Open Mon. & Fri. til 9 p.m.

Phone Chelsea 475-8621

## Senior Citizen Activities

Senior Citizens held their monthly meeting at the Korner House Tuesday, Sept. 28.

Plans were made for the social party which will be held Thursday, Oct. 6 at 7:30 p.m. with Mrs. Hazel Bycraft and Mary Kniss as hostesses.

On Wednesday, Oct. 13, at 12 p.m. a sauerkraut dinner will be served to members for 75 cents. Members are requested to bring their own dishes.

The October birthday party potluck will be held Oct. 21 at 6:30 p.m. The committee for the event is comprised of Margaret Dietle, Loreta Doll and Vesta Hoppe.

Every Friday night is Fun Night at the Korner House.

## SCHOOL LUNCH MENU

Week of Oct. 11 through 15

Monday, Oct. 11—Hoogies (two meat balls in hot dog bun, with sauce), wax beans, French fries, catsup, cherry dessert, milk.

Tuesday, Oct. 12—Michigan potatoes with butter, mini meat loaf, sweet peas, bread and butter, whipped Jell-O, milk.

Wednesday, Oct. 13—Italian spaghetti, kernal corn, Italian bread and butter, peach half, milk.

Thursday, Oct. 14—Sloppy joe in bun, honey pork and beans, sunshine salad, cake with topping, milk.

Friday, Oct. 15—Tuna salad sandwich, potato chips, polka dot salad, sugar cookie, ice cream cup, milk.

Mrs. Myrtle Schooley, her sister, Mrs. Adeline Bice of California, and Carl Vollmer, her brother, from Ferndale, have returned after two weeks of traveling and visiting relatives and friends in their home town of Hancock. Mrs. Schooley is the mother of Mrs. Marilyn Bergeron of Livonia.

## Magic Mirror Beauty Salon

Open Monday thru Friday

9 a.m. to 9 p.m.

Saturday, 8 a.m. to 3 p.m.

PHONE 665-0816

**EARLY BIRD CHRISTMAS SHOPPING?**  
Give a gift you've made they'll remember it longer. We have an excellent selection of yarns, kits and now we are proud to announce that we are carrying a  
6-pz. skein of rug yarn for \$1.29  
Stop in for the  
**TAILFEATHER BOUTIQUE**  
"A Fun Place To Shop"  
105 N. Main Ph. Chelsea 475-2512

LIMITED TIME!  
**FALL SILVER SALE**  
Now thru December 31, 1971

48-pc. Service for 8  
**NOW \$99.95**  
SAVE \$64.05

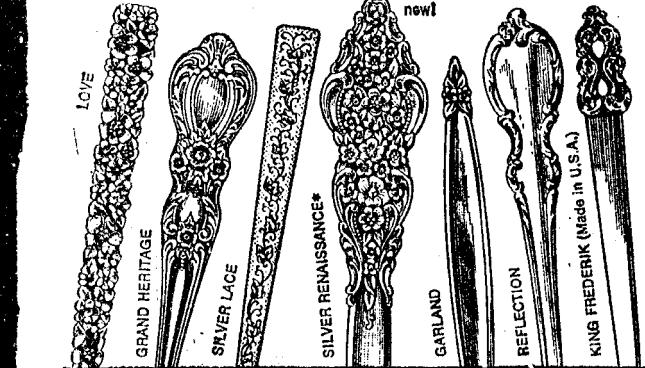
68-pc. Service for 12  
**NOW \$149.95**  
SAVE \$76.05

(Savings over open stock) prices shown for Silverplate.

Services also available in Gold Electroplate at slightly higher prices.

\*Silver Renaissance pattern available November 1, 1971

All other patterns on sale now!



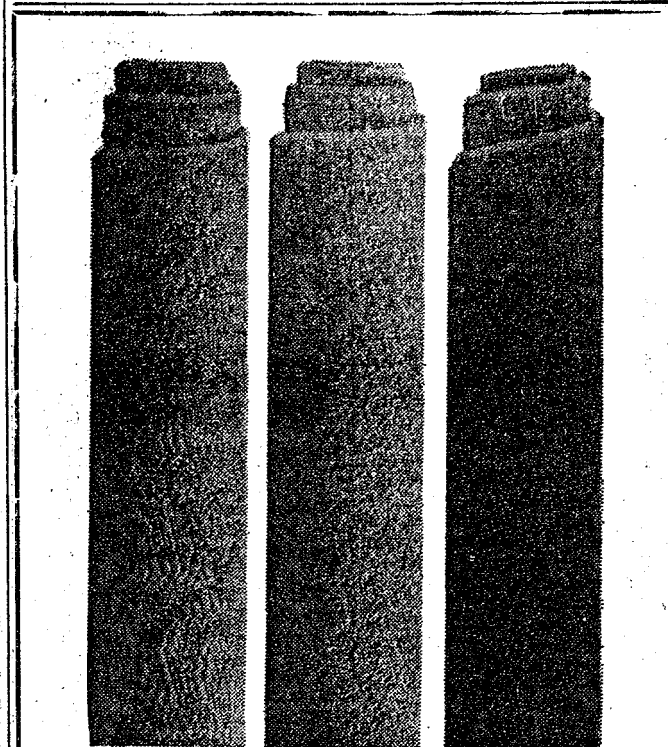
International 1847 Rogers Bros.  
America's Finest Silverplate

**WINANS JEWELRY**

**HAY FEVER?**  
Hay hasn't always been only a livestock feed. During the Revolutionary War, colonials built a sturdy fort from 700 pound hay bales in one night. Come morning, British troops were amazed to see the imposing structure and abandoned their planned attack on the heights of Dorchester near Boston.

**Plan Fire Escape Route**  
If a fire—day or night—occurred in your home, would your family know how to escape, without panic, from the house? An emergency escape plan is needed for your home, advise safety experts. Make certain that all members of the family know how to escape carelessness with faulty cords and Family fire drills should be held as regularly as school fire drills, with everyone participating.

Michigan was the first state to guarantee every child the right to tax-paid high school education.



## ANOTHER LOT OF CARPET BARGAINS

Ends of Rolls - Discontinued Patterns, etc.

|   | Reg. off the Roll Price | SALE PRICE |
|---|-------------------------|------------|
| 12' x 18' Light green shag                    | \$166.80                | \$119.50   |
| 12' x 25'4" Dark green, rubber back shag      | \$159.60                | \$127.00   |
| 12' x15' Gold shag                            | \$159.00                | \$109.80   |
| 10' x 12' Light green shag                    | \$ 92.70                | \$ 52.98   |
| 9'3" x 12' Light green shag                   | \$132.65                | \$ 67.00   |
| 10'2" x 12' Red shag                          | \$120.80                | \$ 69.38   |
| 12' x 12' Red shag                            | \$143.20                | \$ 95.68   |
| 9' x 12' Gold and yellow shag                 | \$119.40                | \$ 71.75   |
| 12' x 15'3" Gold and yellow shag              | \$161.65                | \$119.95   |
| 8'0" x 12'0" Light green shag                 | \$ 76.85                | \$ 47.98   |
| 5'10" x 11'11" Light green shag               | \$ 62.00                | \$ 30.00   |
| 6'0" x 12'0" Light green shag                 | \$ 51.00                | \$ 31.80   |
| 7'4" x 11'3" Light green shag                 | \$ 53.80                | \$ 35.80   |
| 9'0" x 12'0" Gold rubber back shag            | \$ 84.40                | \$ 47.70   |
| 12'0" x 22'6" Olive green, heavy wgt. nylon   | \$328.50                | \$149.40   |
| 15'0" x 15'8" Medium green, heavy nylon twist | \$325.00                | \$175.00   |
| 9'0" x 15'0" Gold, heavy nylon twist          | \$149.25                | \$ 89.70   |
| 9'8" x 12'0" Brown, heavy nylon twist         | \$ 90.85                | \$ 51.70   |
| 12'0" x 12'4" Light green, Acrilan            | \$113.60                | \$ 65.00   |
| 8'3" x 11'1" Olive green, Acrilan             | \$109.45                | \$ 54.45   |
| 9'0" x 15'0" Beige, Acrilan                   | \$104.25                | \$ 59.70   |
| 11'9" x 12'0" Brown, gold stripe, rubber back | \$ 91.20                | \$ 69.95   |
| 12'0" x 14'4" Blue, Acrilan                   | \$151.00                | \$106.00   |
| 12'0" x 15'3" Dark blue, rubber back nylon    | \$183.80                | \$119.90   |
| 12'0" x 19'3" Green, hard weave nylon         | \$255.40                | \$140.85   |
| 13'10" x 15'0" Gold, nylon twist              | \$172.95                | \$107.80   |
| 9'0" x 32'0" Dull red, heavy commercial       | \$321.70                | \$119.95   |
| 9'0" x 12'0" Light green, heavy nylon twist   | \$119.40                | \$ 71.75   |
| 15'0" x 19'0" Gold, Acrilan                   | \$220.00                | \$118.75   |
| 12'6" x 19'2" Light green. Slightly used      | \$284.70                | \$154.70   |

Many smaller size ends of rolls suitable for small rooms at give-away prices!

## TENEX PLASTIC RUNNER

(Protect Your Carpeting)

27 inches wide in clear and gold

\$1.29 per ft.

## NYLON HALL & STAIR RUNNER

Latex back, in green, gold and red.

\$1.09 per ft.

## CORLON & INLAID LINOLEUM

Ends of rolls, suitable for bathrooms, etc.

1/4 to 1/3 OFF REG. PRICE

## OAK RUG BORDER

24" wide, per ft. ....27c

36" wide, per ft. ....39c

## BROWN VINYL MATTING

24" wide, per ft. ....79c

36" wide, per ft. ....\$1.09

## MERKEL BROS.

FURNITURE & CARPETS

Open Mon. & Fri. til 9 p.m.

Ph. Chelsea 475-8621



## Only 5 Commissioners Show for Park Tour

A total of five of Washtenaw County's 13 commissioners participated in the two tours of the proposed Mill Creek Park site and the surrounding area sponsored by the Mill Creek Research Council Sept. 26 and Oct. 3.

On Sunday, Sept. 26, Commissioners William Lands and Ernest Quenon of Ann Arbor were present for the tours. Jay Bradbury, Albert Bredernitz of Saline, and Herbert O. Ellis of Ann Arbor participated in the Oct. 3 tour.

Mrs. Margaret Sias, publicity chairman for MCRC, said that the small participation could be partially attributed to the fact that the County Social Services Center was dedicated Sept. 26 at the same time the MCRC tour was held.

Mrs. Sias also said that several commissioners declined to participate in the MCRC tours, saying that they had already visited the park site on their own.

The MCRC had originally planned to take the commissioners through the Waterloo Recreation Area as well as the Mill Creek area, so they could see some of the recreation facilities already available in the vicinity, and the way in which they are being used.

The commissioners, however, asked that the tour be limited to the Mill Creek area to cut down on the time involved, and it was.

"We were disappointed that they didn't go through the Waterloo Area," Mrs. Sias said. "We thought they might see it differently with the Mill Creek plans in mind than they had on previous occasions."

According to Mrs. Sias, the commissioners were interested in

the presentation made by the MCRC and seemed to feel that the tours were of value to them. The Mill Creek issue will probably be discussed at the County Commissioners board meeting to be held Oct. 19.

Mrs. Sias said that the MCRC hopes that people in the area will contact the commissioners who did not participate in the tours before that time.

MCRC has scheduled a meeting for homeowners within the proposed park boundaries, and other interested citizens, later this month. According to Mrs. Sias the meeting is tentatively set for Oct. 29 at Sylvan Town Hall. Final plans will be announced before the meeting.

## Varsity Golfers Defeat Stockbridge For Second Win

Chelsea's varsity golfers scored their second win of the season as they defeated Stockbridge on Thursday at Inverness Country Club, 170 to 178.

Medalist in the meet was Chelsea's Mark Policht who shot a par round of 36 for nine holes. Glen Musolf was next for Chelsea with 43, followed by Craig Alter with 44, and Captain Dave Powers, and Ken Kusterer each with 47.

Chelsea JV golfers also won their meet with Stockbridge, Thursday, 207 to 213.

Chelsea will continue its fall non-league golf schedule today as it meets Dexter at Inverness Country Club at 3:30 p.m.

Whether you live in a house or an apartment, you should be on guard constantly against the six major causes of home fires. They are: smoking, improper use of electricity and appliances, improper use and storage of flammable liquids, careless cooking habits, improper storage of rubbish and neglected heating equipment.

More than 25,000 autos were abandoned on New York City's streets last year.



**GOLF SQUAD:** Members of Chelsea High school's golf team are playing a fall schedule of meets for the first time this year, in preparation for the state regional tournaments which will be held in Grand Blanc, Oct. 23. So far this season, the team has a two win-no loss record. They'll meet Dexter this afternoon at Inverness Country Club. Members of the team are (left to right), front row: Mark Policht, Todd Sprague, Keith Cotterline, Captain Dave Powers, Glen Musolf, and Jim Powers. Second row: Chris Rabbitt, Glen Alter, Tim Merkel, Ken Kusterer, Craig Alter, Bob Ruthenford, and golf coach Pat Wade.

## Pioneer Day Slated Sunday At Waterloo Farm Museum

Sunday, Oct. 10, from 1 to 5 p.m. is the time. Members of the Waterloo Historical Society are preparing for the thousands who are expected to visit the old Jacob Really farm on that day. The restored Dewey school nearby will also be open and receiving visitors.

Guides in 19th century costumes will be in each room of the house to greet guests. Long tables on the lawn will be laden with homemade goodies—bread, cakes, pies, pickles, jellies, jams, garden produce and materials for dried winter bouquets. The sale of these things will help pay for a new roof on the tool shed and a much needed paint job on the house.

Of special interest this year will be a display of old cars to be brought by their owners from the Stockbridge and Chelsea areas. Showing their cars will be Caspar Glenn, Mrs. William Caskey, Mort Cole, Norman Kaiser, Ralph Anderson, Jim Daniels, Bill Malcho, and Bill Barber. The famous Waterloo Band under the direction of Will Parks will provide musical entertainment.

To show how things used to be done in the "good old days," members of the Ann Arbor Weavers Guild will be playing their craft. Mrs. S. A. Beckwith and local girls she has taught, will spin and Mrs. Walter Gardner of Grass Lake will make butter. William Landis will demonstrate the use of the husking peg. Mrs. Milton Koble of Plymouth will show how chair bottoms were woven from rushes, just another name for cat tail leaves, and Mrs. Max Kalmbach will be seen caning a chair. Mrs. Gerald Couter of Ann Arbor, whose hooked rugs were so admired last year, will again demonstrate that craft, while Mrs. Horace Hanson of Unadilla will show the ancient art of macrame.

Gail Landis and Dorothy Austin will come home from Alma College to bake old-fashioned molasses cookies in the brick oven. These may be bought singly to eat on the spot or by the dozen at the window of the log bake house. Gail and Dorothy were guides at the museum this past summer.



Helpful Civic Information to acquaint you with your new community. Call the Welcome Wagon Hostess so that she may visit you.

PHONE 426-8897

Welcome Wagon

## WEEK-END SPECIALS

Regular 15c Butterfinger Candy Bars . . . 6 for 59c

200-Count Pkg. 2-Ply Spartan Facial Tissues . . . . . 29c

Wilson Homogenized Milk . . . . . gal. 77c

12 1/2-Oz. Can Breast-O-Chicken Tuna . . . . . only 69c

Betty Crocker Cake Mixes . . . 4 for \$1.00

Mix or Match

With Free Soap Dish Dove Beauty Soap, 2 for 45c

15-Oz. Bag Sunshine Potato Chips . . . . . 79c

# **RICK'S MARKET**

20940 M-52

Phone 475-2898

## School Bus Hits 2 Horses Loose On Conway Rd.

A Chelsea School District bus, with six students still aboard, was involved in a minor accident on Conway Rd., north of Bush Rd., at approximately 4:15 p.m. Monday.

The driver of the bus, Bernice Evelyn Miller, 47387 Cassidy Rd., told Sheriff's deputies that she was unable to avoid hitting two of approximately nine horses which ran onto the roadway from the east side of the road.

No one was injured in the accident.

The two horses, belonging to Arthur Tremper, 246 1/2 Jefferson St., were cut, one of them badly, by the bus. Both were treated by the Lane Animal Hospital and are expected to survive.

According to Chelsea School District Business Manager Fred Mills, there was slight damage to the grille, right front fender, and side view mirror of the bus.

## No Mail Service on Columbus Day Holiday

Postmaster Richard Schauls advises Chelsea Post Office customers that Columbus Day, Monday, Oct. 11, will be observed as a holiday.

No window service will be provided and there will be no delivery of mail by city, rural, or star route carriers.

For inexpensive dinner insurance buy a meat thermometer to eliminate the guesswork when roasting beef, pork or lamb. Simply insert a roast thermometer so the bulb is centered, making sure that it touches neither bone nor fat. If the roast is to "set" before being carved (recommended for easier carving), remove meat from the oven when the thermometer registers an internal temperature approximately 5 degrees F. below the temperature designating desired degree of doneness.

## NOW READY

GRAIN MARKETING, DRYING AND

STORAGE ARE NOW AVAILABLE AT

HONEGGER'S, CHELSEA, MICH.,

WITH FULL BONDED PROTECTION

TO PATRONS

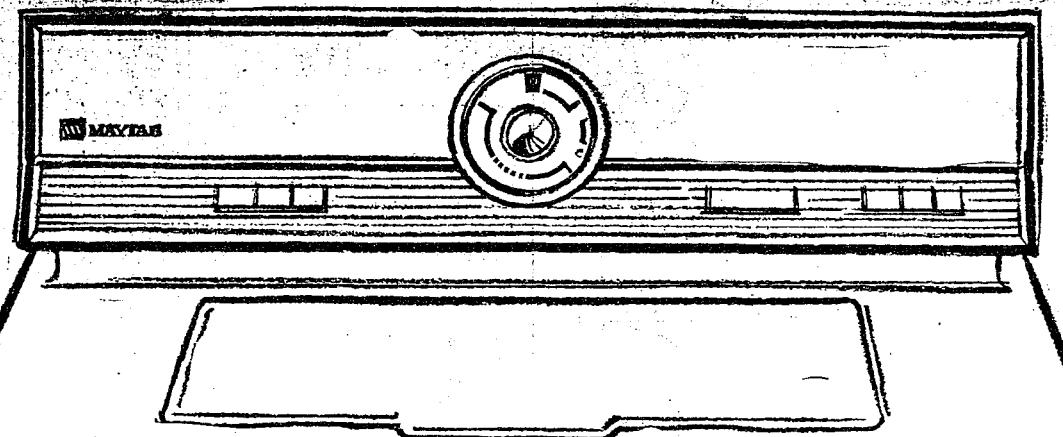
# **Honegger's & Co., Inc.**

11800 Dexter-Chelsea Rd.

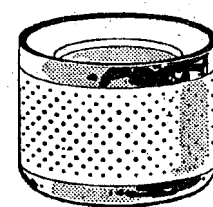
Chelsea, Mich.

Phone (313) 475-3611

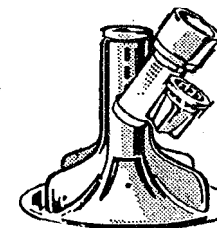
# **MAYTAG IS BACK** with the **Right Combination of Economy and Features**



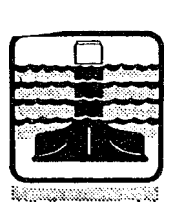
This low cost Maytag Automatic gives you these features:



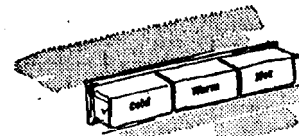
**Big family-size tub** — Built to handle big loads. Gets large or small loads sparkling clean.



**Power Fin Agitator** — Maytag thorough, gentle action. Underwater lint filter.



**Automatic Water Level Control** — Lets you adjust water use to size of load. Saves gallons.



Hot, warm or cold wash — gives you the right temperature for all fabrics, denims to delicates.



Great 525 Warranty\* — 5-year cabinet warranty against rust. 2 years on complete washer. 5 years on transmission warranty.\*

You can own this Maytag Automatic for only

# **\$239<sup>95</sup>**



\* Free replacement of parts that fail, or cabinet if it rusts, as a result of home use. Labor required for installation of parts is free for one year from date of purchase; thereafter labor is extra.

MAYTAG MATCHING ELECTRIC DRYER, Only \$179.95

Plus famous Maytag dependability that keeps them working!

# **HEYDLAUFF'S**

113 North Main St.

(Formerly Frigid Products)

Phone GR 9-6651

## Chelsea Rod & Gun Club TRAP SHOOT

7103 Linsane Rd.

Open Every Sunday

10 a.m. to 2 p.m.

Until Hunting Season Opens

Various prizes up to \$10

Value for top scorers.

## GARAGE AUCTION

BY ORDER OF OWNER  
QUITTING BUSINESS — EVERYTHING SELLS  
**BALMER'S BRAKE SERVICE**  
CHELSEA, MICH.

As we are quitting business a public auction will be held, located at 140 West Middle Street, Chelsea, Michigan.

10:30 a.m. **SAT., OCT. 9** 10:30 a.m.

Ph. Stockbridge **PRICE BROTHERS** Ph. Stockbridge  
517-851-8042 **AUCTIONEERS** 517-851-8042

## Garage Equipment - Tools - Wrecker Office Equipment

Booster cables. Chains. Two electric drills, large & small. Ten car stands. Wrenches, truck and bus. Body bumping tools. Highway fuses. End wrenches. Shiny wheels, etc. Tire patching equipment and test tank. Tire changers. Belts and hoses. Bulbs. Fuses. Battery cables. Thermostats. Gaskets. Used and rebuilt generators and starters. Fuel pumps. Spark plug cleaner. 2 battery chargers. Heater hoses. Tire boots. Hose clamps. Tool kit. Muffler clamps. Brake linings. Bear wheel aligner. Hand grease guns. Air grease guns. Chassis gear lube. Barrett brake lathe and attach. Barrett brake riveter. Rivet cabinet and stand. Large floor jack. Buffer and stand. Bench grinder. Hammer arch welder & rod. Chain falls. Chain fall trolleys. Black & Decker valve refacer. Van Dorn valve resealer. DeVilbiss spray gun, hose & regulator. Gear pulleys. Large paint air regulator. Two 10-ton hydraulic jacks. Wheel chains & cross links. Ridge reamer. Cylinder hone. Brake cylinder hone. Generator and alternator pulley puller. Taps & dies. Clutch aligning set. Reamer & hone sets. Air chisel. Brum drum gauge. Brake lining gauge. Air hose. Ames Jr. cylinder gauge. Wheel puller sets. Piston ring compressors. Large bench vise & anvil.

**OFFICE EQUIPMENT**  
Olivetti adding machine. Remington Rand cash register. Two Uarco machines, large & small. Filing cabinet. Office desk and chair.

**WRECKER**  
1/4 ton Chevrolet wrecker. Lots of wrecker equipment, including cable of different sizes.

TERMS: Cash or Check.

No Goods Removed Until Settled For.  
Not Responsible for Accidents or Items After Sold.  
Lunch on Grounds.

Inspection Friday, October 8

# **Balmer's Brake Service**

313-475-5131